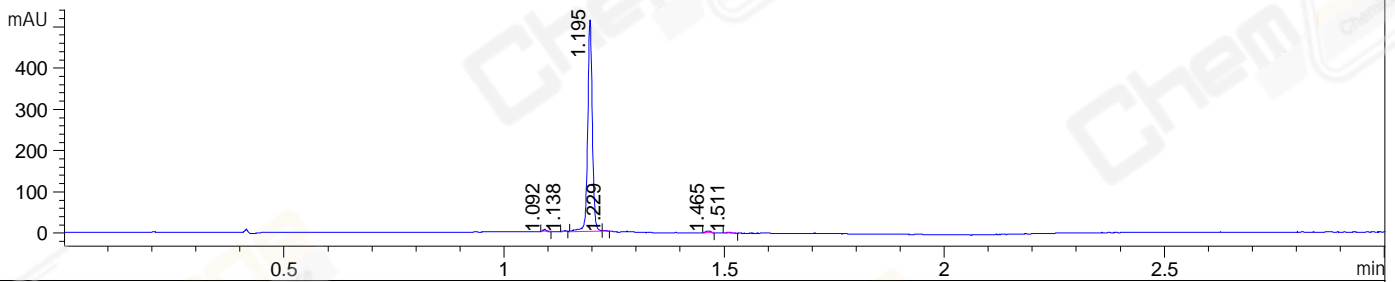
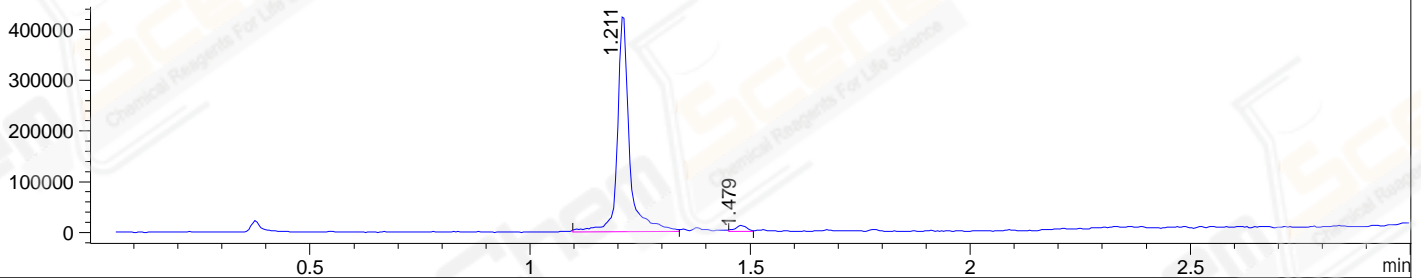


File ..DATA\2020\20200729\1057\CPK2020-728-39265.D Tgt Mass (CHM):
 Injection Date : 29 Jul 20 10:52 am +0800 Seq. Line : 25
 Sample Name : CPK2020-728-39265 Location : P1-D-01
 Acq. Operator : ZJ_1432 Inj : 1
 Spec. Reported : MS Integration Inj Volume : 1 ul
 Acq. Method : D:\Chem32\1\data\2020\20200729\1057\1-POS-3MIN.M
 Analysis Method : D:\CHEM32\1\DATA\2020\20200729\1057\1-POS-3MIN.M
 Catalog No : CS-7731
 Method Info : Mobile Phase: A: water(0.01%TFA) B:ACN(0.01%TFA)
 Gradient: 5% to 95%B within 1.3 min
 Flow Rate :1.8ml/min
 Column :SunFire C18, 4.6*50mm,3.5um A-RP-314
 Oven Temperature : 45C

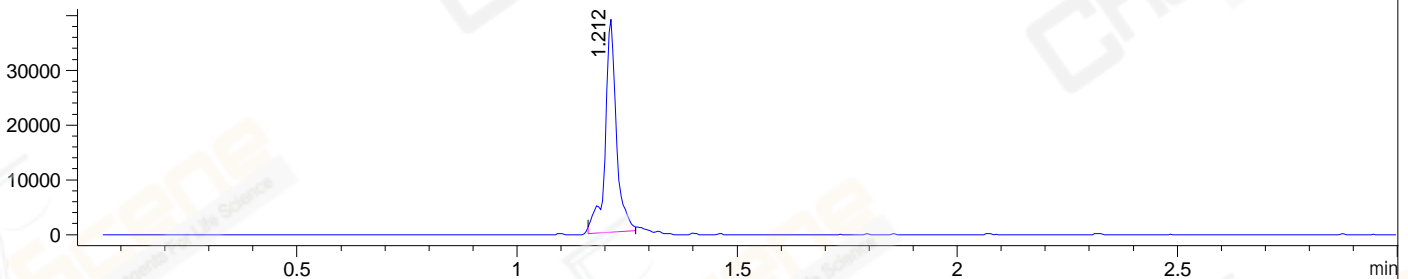
DAD1 C, Sig=254,4 Ref=off



MSD1 TIC, MS File ES-API, Pos, Scan, Frag: 70



Ion 445, MSD1 445, Target Mass 444 +H Positive, EIC=444.7:445.7



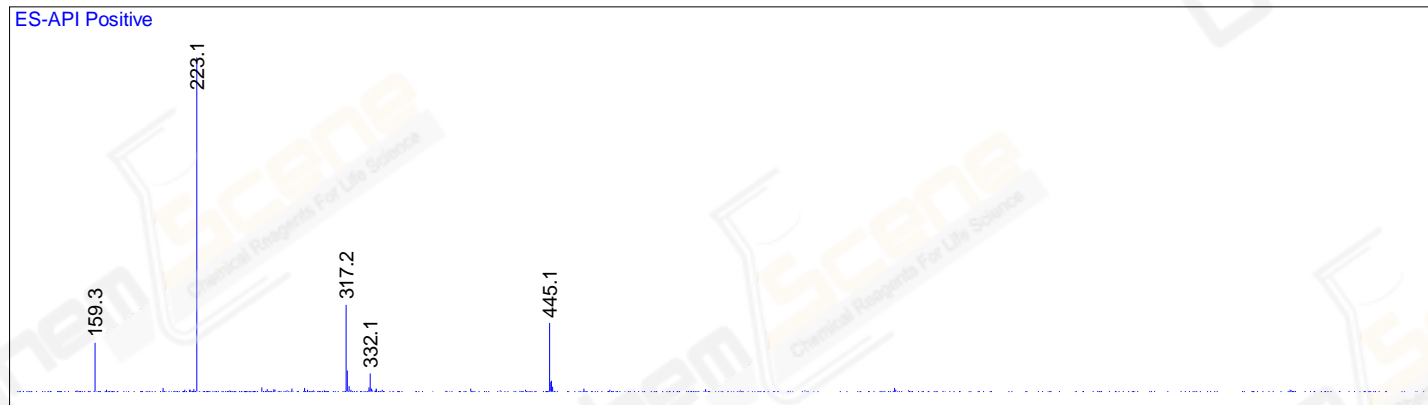
Integration Results for DAD1 C, Sig=254,4 Ref=off

RetTim	Width	Area	Height	Area%	MS (+)
1.09	0.01	1.57	3.92	0.41	ND
1.14	0.01	0.58	1.39	0.15	ND
1.20	0.01	374.72	514.54	98.13	223
1.23	0.01	1.58	2.41	0.41	223
1.46	0.01	2.48	4.16	0.65	261
1.51	0.01	0.95	1.47	0.25	ND

Integration Results for MSD1 TIC, MS File

RetTim	Width	Area	Height	Area%	MS (+)
1.21	0.03	813711.06	432397.66	97.42	223
1.48	0.03	21586.68	11935.51	2.58	261

Ret. Time: 1.21 <<<< POSITIVE SPECTRA >>>>



Ret. Time: 1.48

