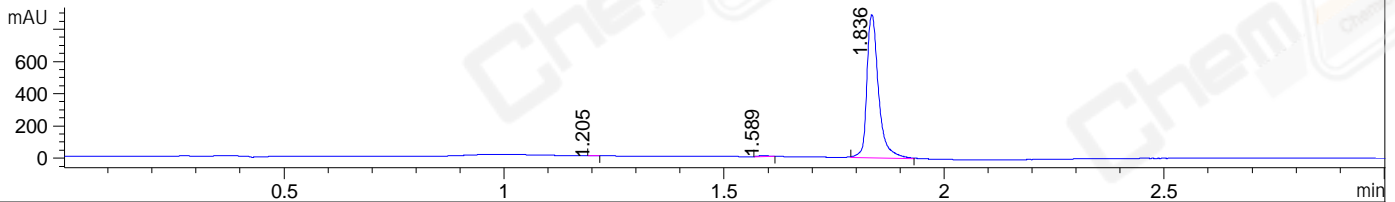
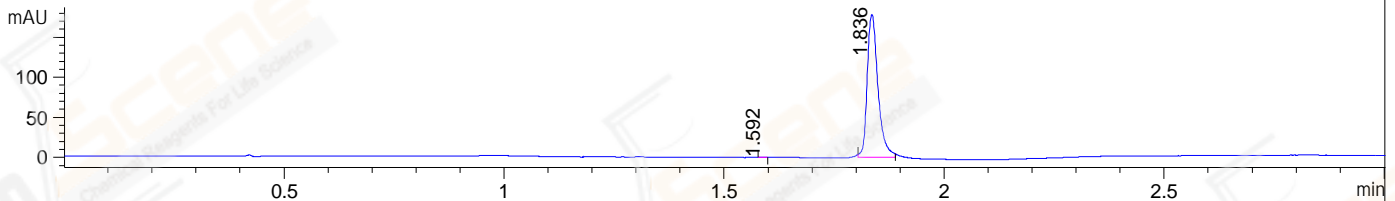


File ..1\DATA\2019\20190328\559\BIZ2019-327-CXL1.D Tgt Mass (CHM):  
 Injection Date : 28 Mar 19 10:32 am +0800 Seq. Line : 15  
 Sample Name : BIZ2019-327-CXL1 Location : P2-E-02  
 Acq. Operator : LQ\_1052 Inj : 1  
 Spec. Reported : MS Integration Inj Volume : 1 ul  
 Acq. Method : D:\Chem32\1\data\2019\20190328\559\1-POS-3MIN-1.M  
 Analysis Method : D:\CHEM32\1\DATA\2019\20190328\559\1-POS-3MIN-1.M  
 Catalog No : CS-5427 Batch# 39462  
 Method Info : Mobile Phase: A: water(0.01%TFA) B:ACN(0.01%TFA)  
 Gradient: 5% to 95%B within 1.3 min  
 Flow Rate :1.8ml/min  
 Column :SunFire C18, 4.6\*50mm,3.5um A-RP-314  
 Oven Temperature : 45□

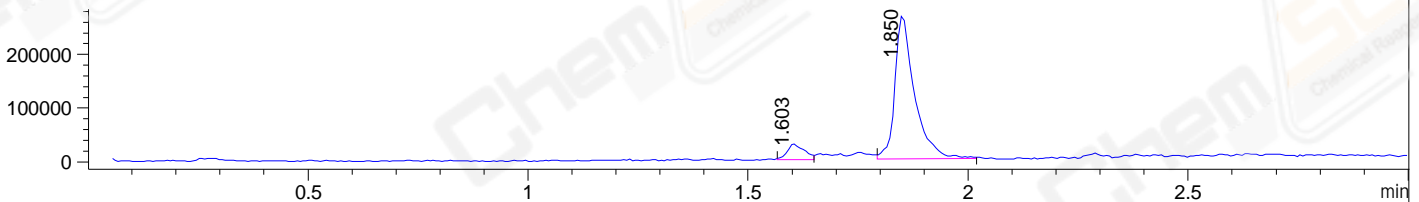
DAD1 B, Sig=214,4 Ref=off



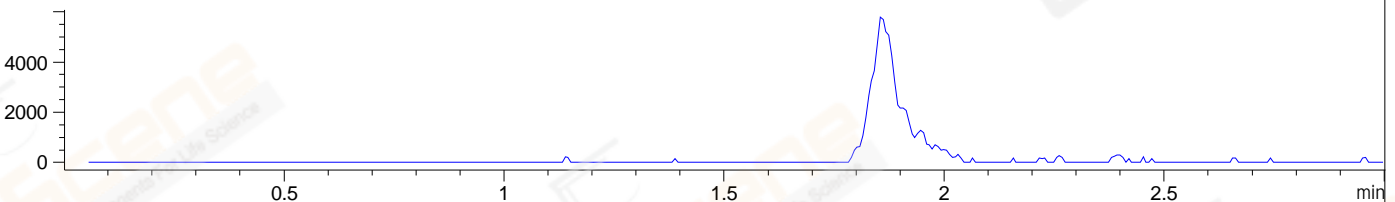
DAD1 C, Sig=254,4 Ref=off



MSD1 TIC, MS File ES-API, Pos, Scan, Frag: 70



Ion 427.1, MSD1 427.1, Target Mass 426.1 +H Positive, EIC=426.8:427.8



Integration Results for DAD1 B, Sig=214,4 Ref=off

RetTim	Width	Area	Height	Area%	MS (+)
1.20	0.02	0.96	1.04	0.06	ND
1.59	0.02	8.44	5.81	0.51	174
1.84	0.03	1637.46	889.51	99.43	387

Integration Results for DAD1 C, Sig=254,4 Ref=off

RetTim	Width	Area	Height	Area%	MS (+)
1.59	0.02	0.26	0.23	0.09	174
1.84	0.03	303.28	178.40	99.91	387

Integration Results for MSD1 TIC, MS File

RetTim	Width	Area	Height	Area%	MS (+)
1.60	0.03	79010.82	29767.30	8.67	174
1.85	0.04	832430.44	268589.06	91.33	387

Ret. Time: 1.60

<<<< POSITIVE SPECTRA >>>>

ES-API Positive



Ret. Time: 1.85

ES-API Positive

