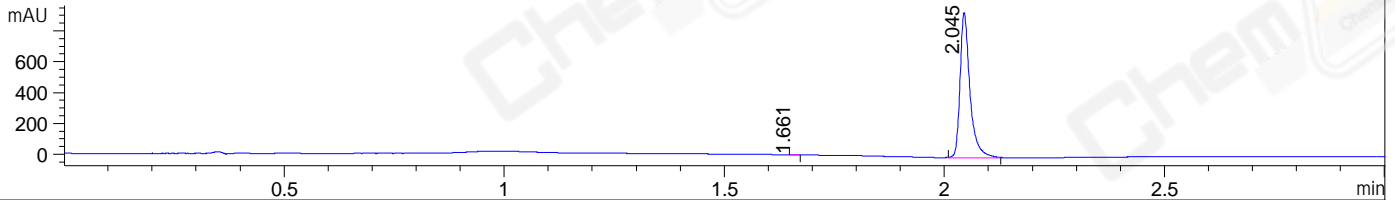
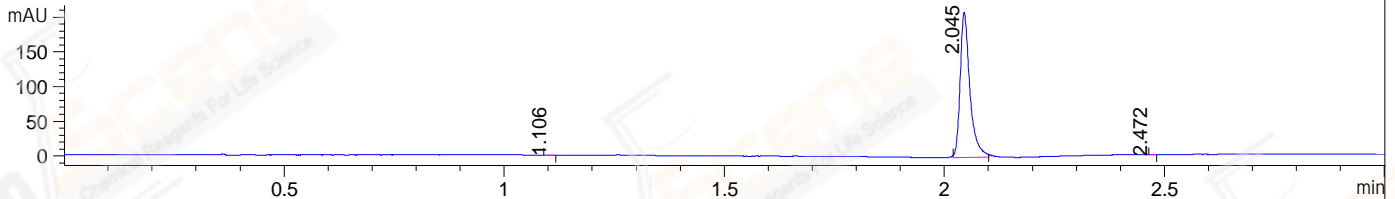


File ..1\DATA\2019\20190402\562\BIZ2019-401-CXL2.D Tgt Mass (CHM):  
 Injection Date : 2 Apr 19 2:59 pm +0800 Seq. Line : 5  
 Sample Name : BIZ2019-401-CXL2 Location : P2-E-07  
 Acq. Operator : LQ\_1052 Inj : 1  
 Spec. Reported : MS Integration Inj Volume : 1 ul  
 Acq. Method : D:\Chem32\1\data\2019\20190402\562\1-POS-3MIN-1.M  
 Analysis Method : D:\CHEM32\1\DATA\2019\20190402\562\1-POS-3MIN-1.M  
 Catalog No : CS-6750 Batch#39576  
 Method Info : Mobile Phase: A: water(0.01%TFA) B:ACN(0.01%TFA)  
 Gradient: 5% to 95%B within 1.3 min  
 Flow Rate :1.8ml/min  
 Column :SunFire C18, 4.6\*50mm,3.5um A-RP-314  
 Oven Temperature : 45□

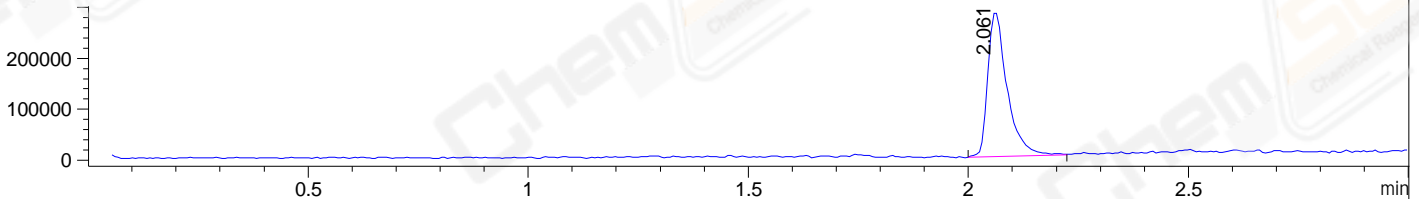
DAD1 B, Sig=214,4 Ref=off



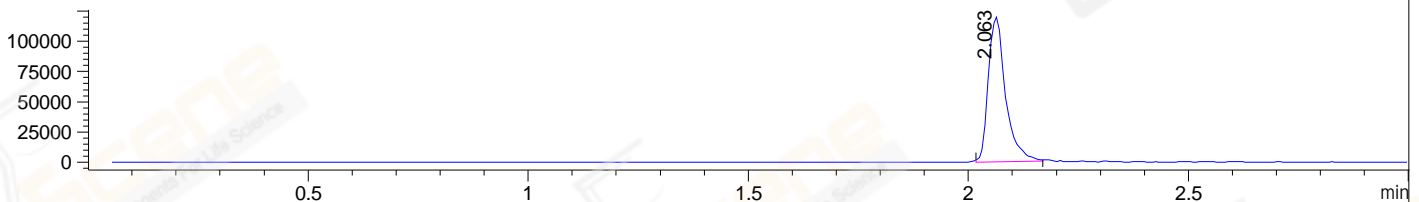
DAD1 C, Sig=254,4 Ref=off



MSD1 TIC, MS File ES-API, Pos, Scan, Frag: 70



Ion 298, MSD1 298, Target Mass 297 +H Positive, EIC=297.7:298.7



## Integration Results for DAD1 B, Sig=214,4 Ref=off

RetTim	Width	Area	Height	Area%	MS (+)
1.66	0.02	0.53	0.58	0.04	142
2.05	0.02	1473.00	940.97	99.96	298

## Integration Results for DAD1 C, Sig=254,4 Ref=off

RetTim	Width	Area	Height	Area%	MS (+)
1.11	0.01	0.28	0.36	0.09	142
2.05	0.02	319.49	208.95	99.89	298
2.47	0.01	0.07	0.13	0.02	142

## Integration Results for MSD1 TIC, MS File

RetTim	Width	Area	Height	Area%	MS (+)
2.06	0.05	872376.19	286958.03	100.00	298

Ret. Time: 2.06

<<<< POSITIVE SPECTRA >>>>

ES-API Positive

