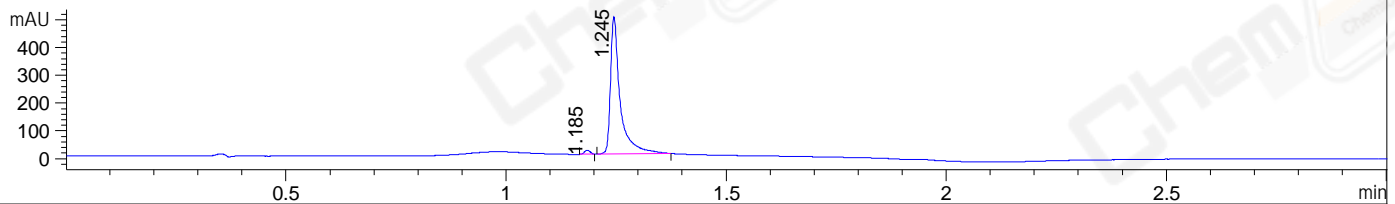


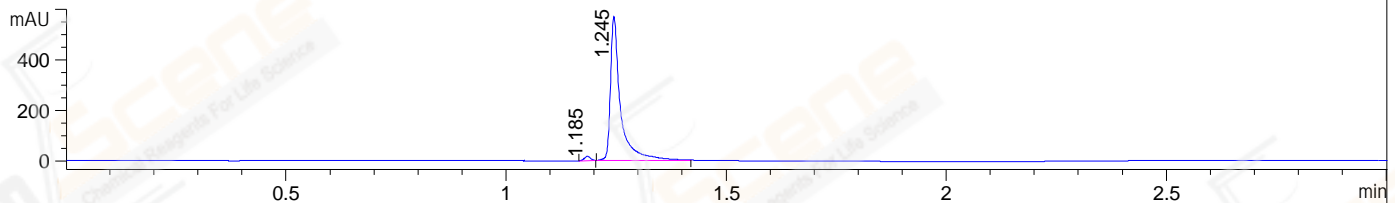
File ..1\DATA\2019\20190417\558\BIZ2019-416-WYQ7.D Tgt Mass (CHM):

Injection Date : 17 Apr 19 11:01 am +0800 Seq. Line : 24  
 Sample Name : BIZ2019-416-WYQ7 Location : P1-A-04  
 Acq. Operator : LQ\_1052 Inj : 1  
 Spec. Reported : MS Integration Inj Volume : 1 ul  
 Acq. Method : D:\Chem32\1\data\2019\20190417\558\1-POS-3MIN-1.M  
 Analysis Method : D:\CHEM32\1\DATA\2019\20190417\558\1-POS-3MIN-1.M  
 Catalog No : CS-2823 Batch#40305  
 Method Info : Mobile Phase: A: water(0.01%TFA) B:ACN(0.01%TFA)  
 Gradient: 5% to 95%B within 1.3 min  
 Flow Rate :1.8ml/min  
 Column :SunFire C18, 4.6\*50mm,3.5um A-RP-314  
 Oven Temperature : 45□

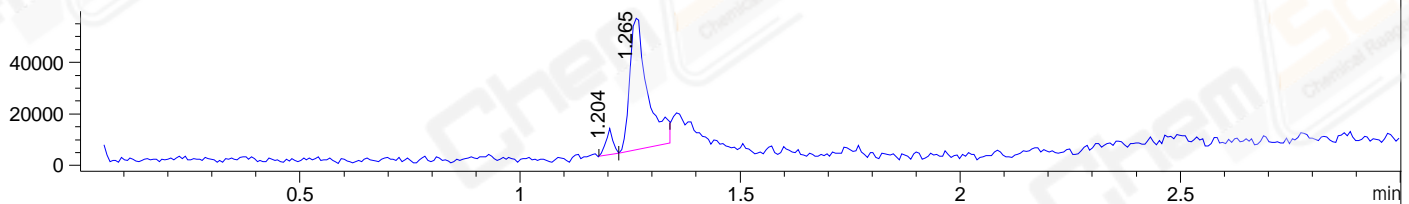
DAD1 B, Sig=214,4 Ref=off



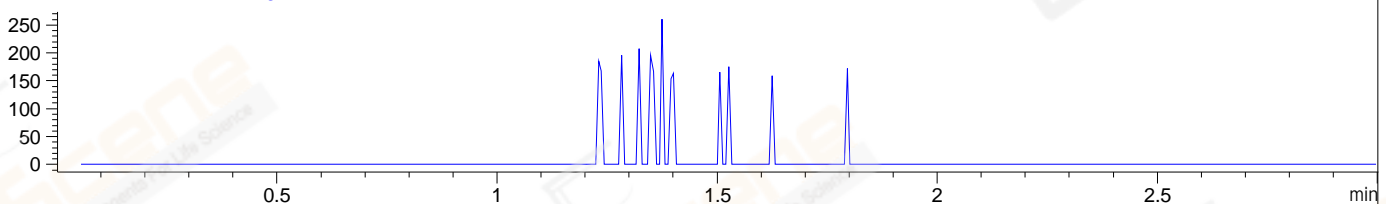
DAD1 C, Sig=254,4 Ref=off



MSD1 TIC, MS File ES-API, Pos, Scan, Frag: 70



Ion 745, MSD1 745, Target Mass 744 +H Positive, EIC=744.7:745.7



Integration Results for DAD1 B, Sig=214,4 Ref=off

RetTim	Width	Area	Height	Area%	MS (+)
1.18	0.01	13.29	14.83	1.72	303
1.25	0.03	759.95	495.46	98.28	343

Integration Results for DAD1 C, Sig=254,4 Ref=off

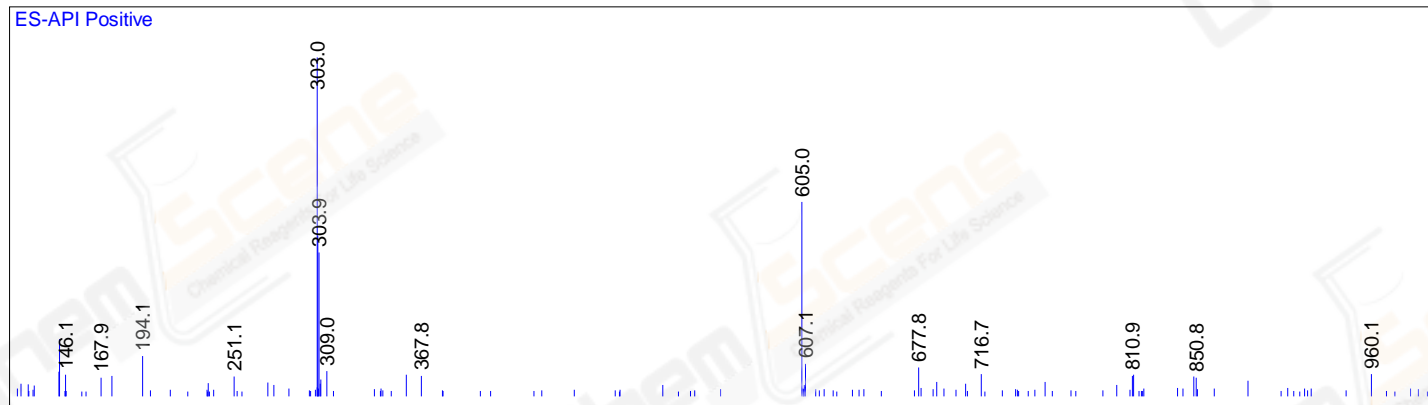
RetTim	Width	Area	Height	Area%	MS (+)
1.19	0.01	15.98	17.15	1.74	303
1.25	0.03	902.68	569.24	98.26	343

Integration Results for MSD1 TIC, MS File

RetTim	Width	Area	Height	Area%	MS (+)
1.20	0.02	11436.07	10154.71	7.36	303
1.27	0.04	143947.16	51233.80	92.64	343

Ret. Time: 1.20

<<<< POSITIVE SPECTRA >>>>



Ret. Time: 1.27

