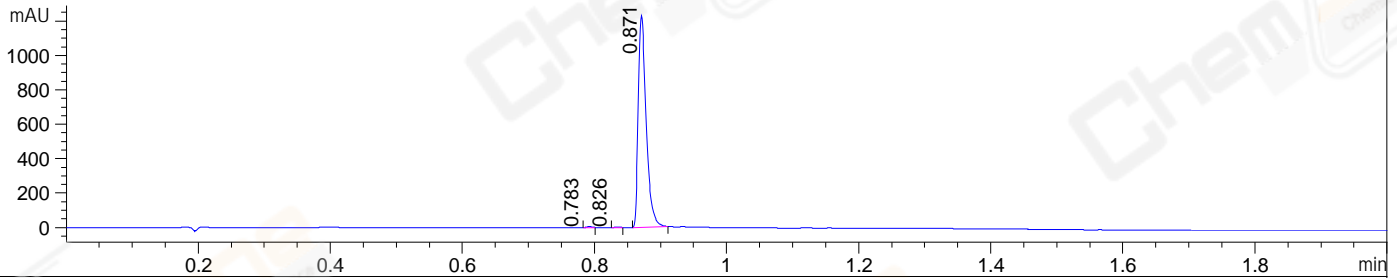
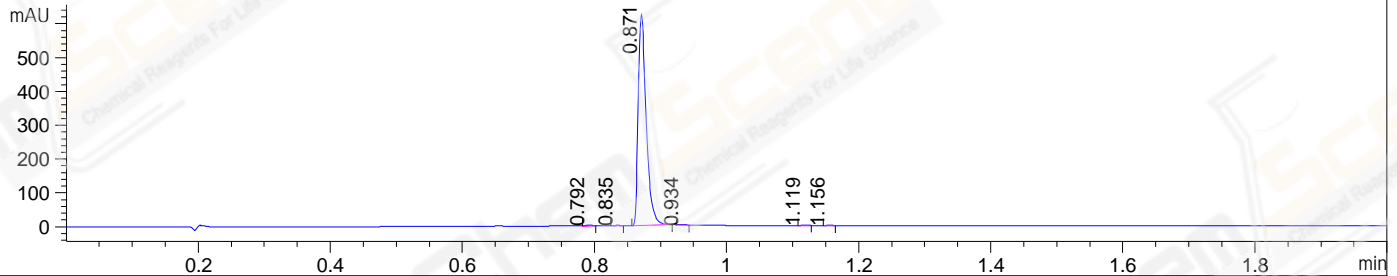


File ..\2022\2022-01-13\CPK2022-112-40418-006822.D Tgt Mass (EZ):
 Injection Date : 13-Jan-22, 12:28:45 Seq. Line : 0
 Sample Name : CPK2022-112-40418 Location : P1-F-08
 Acq. Operator : LY_2278 Inj : 1
 Spec. Reported : MS Integration Inj Volume : 0.5 ul
 Acq. Method : E:\Chem32\1\Methods\1-POS-UPLC2.0MIN(0.8)(150-1000).M
 Analysis Method : E:\CHEM32\1\METHODS\1-POS-UPLC2.0MIN(0.8)(150-1000).M
 CAS NO. : 1644069-80-6 WalkUp method: '1-POS-2MIN' Target:
 Method Info : Mobile Phase: A: water(0.01%TFA) B:ACN(0.01%TFA)
 Gradient: 5% to 95%B within 1.3 min
 Flow Rate : 0.8ml/min
 Column :Poroshell 120 EC- C18, 2.1*50mm,1.9um A-RP-750
 Oven Temperature : 45C

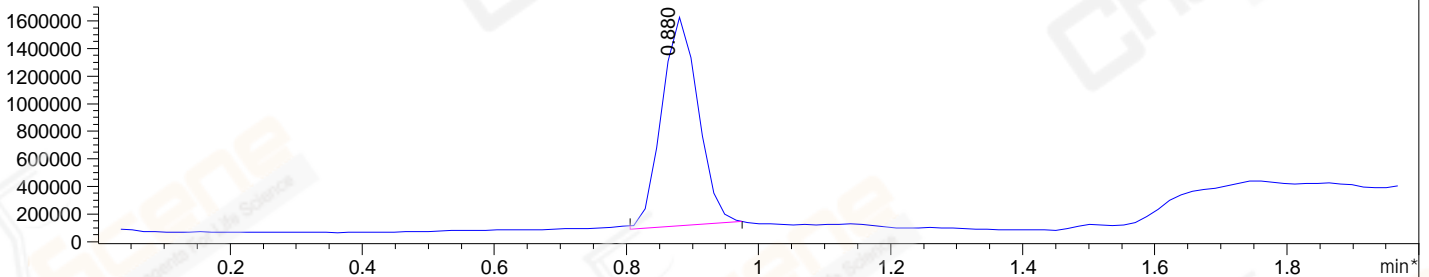
DAD1 A, Sig=214,4 Ref=off



DAD1 B, Sig=254,4 Ref=off



*MSD1 TIC, MS File ES-API, Pos, Scan, Frag: 70



Integration Results for DAD1 A, Sig=214,4 Ref=off

RetTim	Width	Area	Height	Area%	MS (+)
0.78	0.01	3.91	0.69	0.38	418
0.83	0.01	2.02	0.69	0.19	418
0.87	0.01	1028.79	1235.60	99.43	418

Integration Results for DAD1 B, Sig=254,4 Ref=off

RetTim	Width	Area	Height	Area%	MS (+)
0.79	0.01	1.37	2.35	0.26	418
0.83	0.01	1.03	1.47	0.19	418
0.87	0.01	522.86	622.23	99.18	418
0.93	0.01	0.52	0.71	0.10	418
1.12	0.01	0.85	1.32	0.16	922
1.16	0.01	0.53	0.83	0.10	922

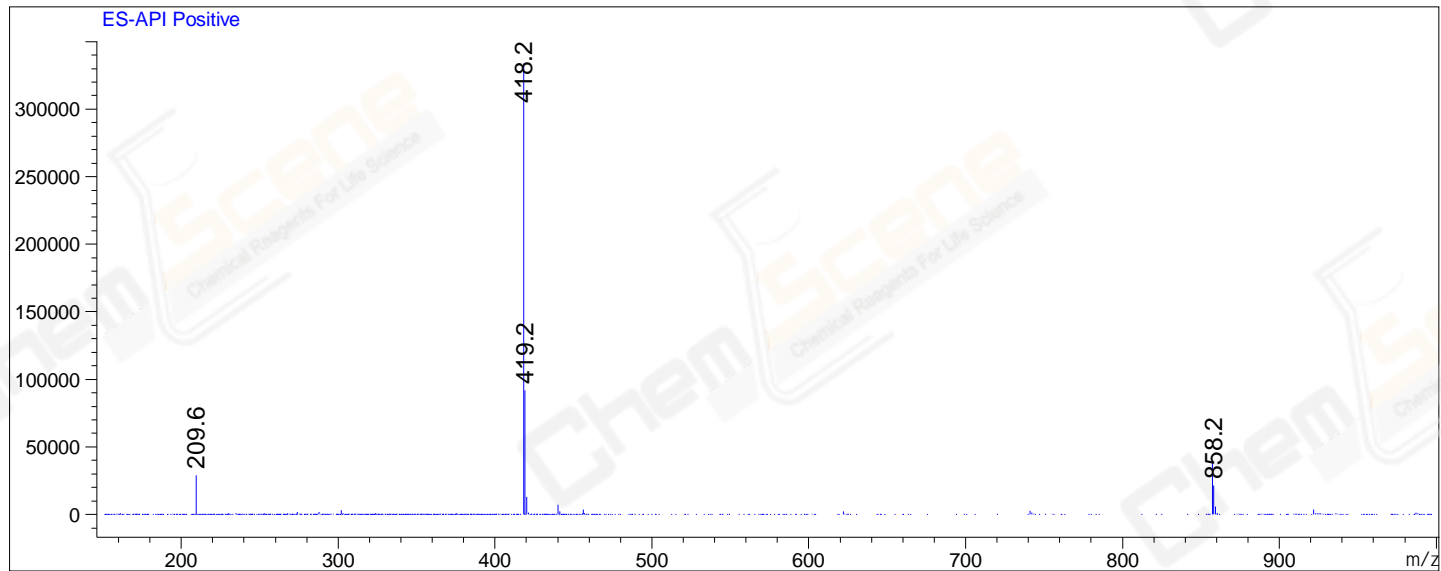
Integration Results for MSD1 TIC, MS File

RetTim	Width	Area	Height	Area%	MS (+)
--------	-------	------	--------	-------	--------

0.88 0.06 5769724.50 1537467.25 100.00 418

Ret. Time: 0.88

<<<< POSITIVE SPECTRA >>>>



*** End of Report ***