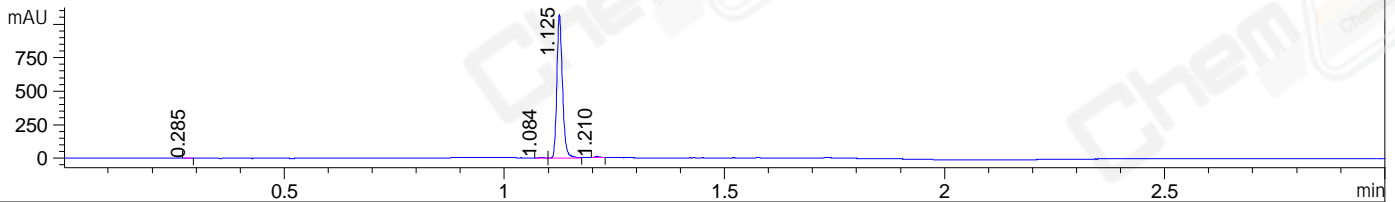
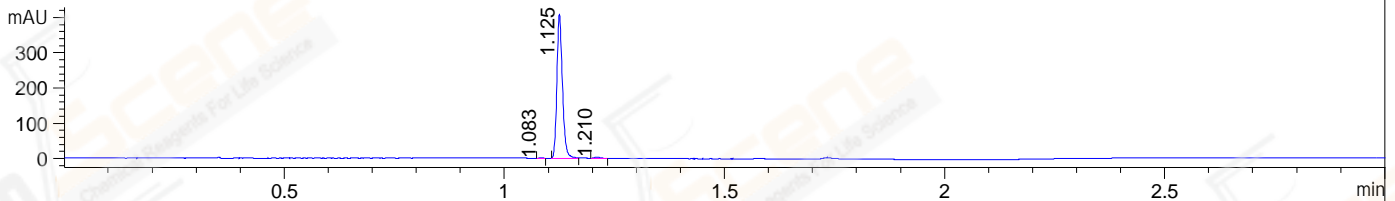


File ..1\DATA\2019\20190528\574\BIZ2019-527-WYQ7.D Tgt Mass (CHM):
 Injection Date : 28 May 19 1:34 pm +0800 Seq. Line : 8
 Sample Name : BIZ2019-527-WYQ7 Location : P1-B-04
 Acq. Operator : LQ_1052 Inj : 1
 Spec. Reported : MS Integration Inj Volume : 1 ul
 Acq. Method : D:\Chem32\1\data\2019\20190528\574\1-POS-3MIN.M
 Analysis Method : D:\CHEM32\1\DATA\2019\20190528\574\1-POS-3MIN.M
 Catalog No : CS-4037 Batch#41615
 Method Info : Mobile Phase: A: water(0.01%TFA) B:ACN(0.01%TFA)
 Gradient: 5% to 95%B within 1.3 min
 Flow Rate :1.8ml/min
 Column :SunFire C18, 4.6*50mm,3.5um A-RP-433
 Oven Temperature : 45□

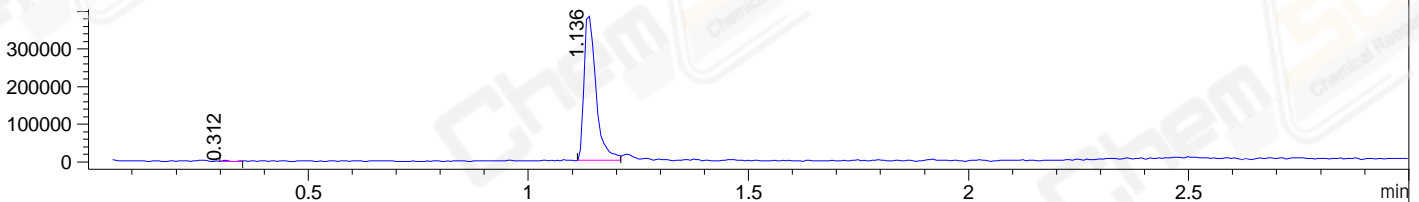
DAD1 B, Sig=214,4 Ref=off



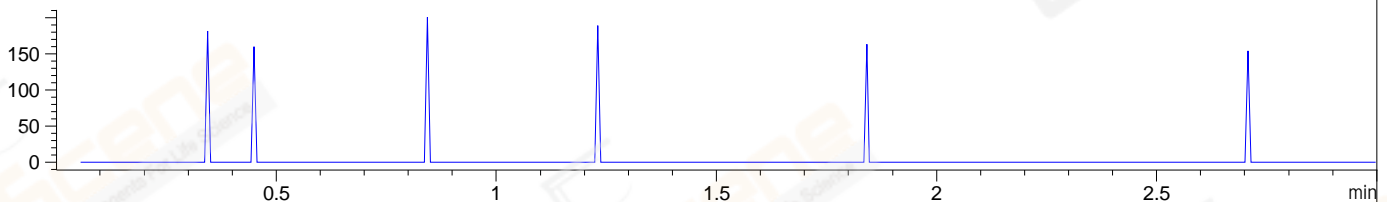
DAD1 C, Sig=254,4 Ref=off



MSD1 TIC, MS File ES-API, Pos, Scan, Frag: 70



Ion 530.1, MSD1 530.1, Target Mass 529.1 +H Positive, EIC=529.8:530.8



Integration Results for DAD1 B, Sig=214,4 Ref=off

RetTim	Width	Area	Height	Area%	MS (+)
0.29	0.01	1.57	1.85	0.16	ND
1.08	0.01	2.16	2.99	0.23	ND
1.13	0.01	941.03	1069.96	98.91	230
1.21	0.01	6.67	8.66	0.70	458

Integration Results for DAD1 C, Sig=254,4 Ref=off

RetTim	Width	Area	Height	Area%	MS (+)
1.08	0.01	0.80	1.09	0.22	ND
1.13	0.01	355.61	408.13	98.93	230
1.21	0.01	3.04	3.65	0.84	458

Integration Results for MSD1 TIC, MS File

RetTim	Width	Area	Height	Area%	MS (+)
0.31	0.01	1811.43	2028.26	0.25	ND
1.14	0.03	726993.69	389546.50	99.75	230

Ret. Time: 1.14

ES-API Positive

