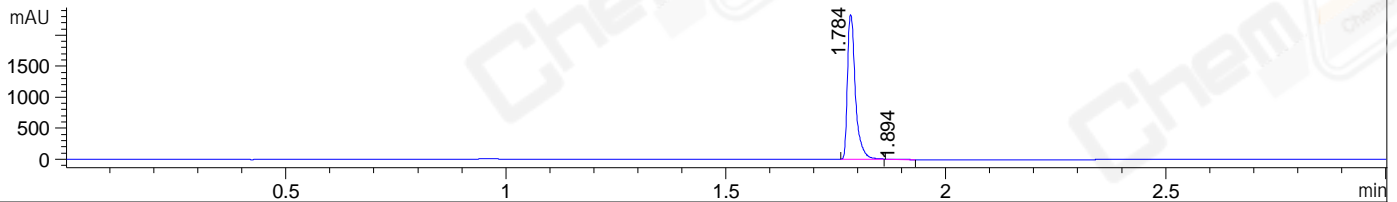
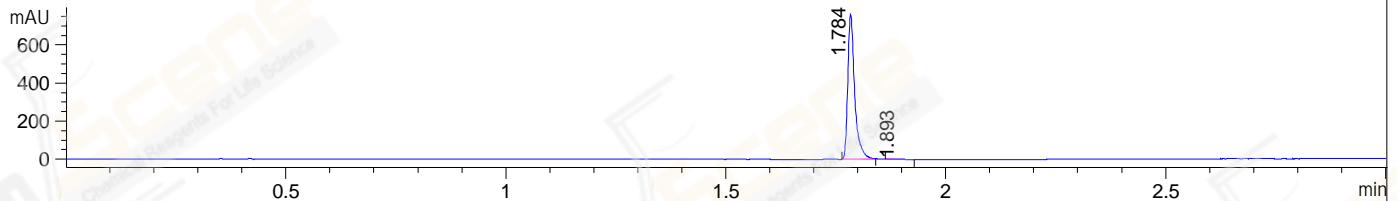


File ..1\DATA\2019\20190531\577\BIZ2019-530-WYQ1.D Tgt Mass (CHM):  
Injection Date : 31 May 19 10:58 am +0800 Seq. Line : 18  
Sample Name : BIZ2019-530-WYQ1 Location : P1-E-05  
Acq. Operator : LQ\_1052 Inj : 1  
Spec. Reported : MS Integration Inj Volume : 1 ul  
Acq. Method : D:\Chem32\1\data\2019\20190531\577\1-POS-3MIN.M  
Analysis Method : D:\CHEM32\1\DATA\2019\20190531\577\1-POS-3MIN.M  
Catalog No : HY-100732 Batch#41687  
Method Info : Mobile Phase: A: water(0.01%TFA) B:ACN(0.01%TFA)  
Gradient: 5% to 95%B within 1.3 min  
Flow Rate :1.8ml/min  
Column :SunFire C18, 4.6\*50mm,3.5um A-RP-433  
Oven Temperature : 45□

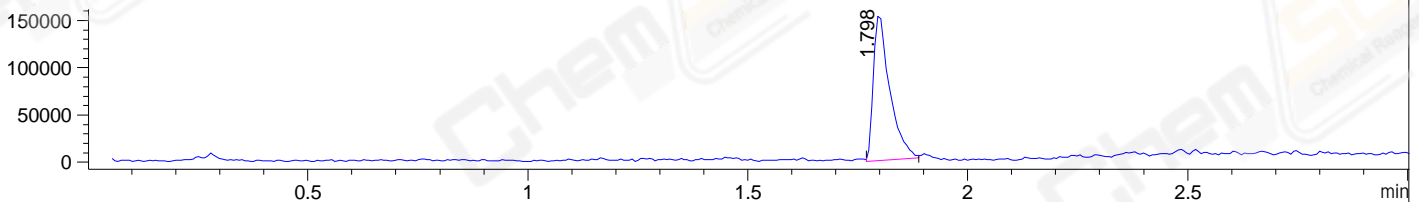
DAD1 B, Sig=214,4 Ref=off



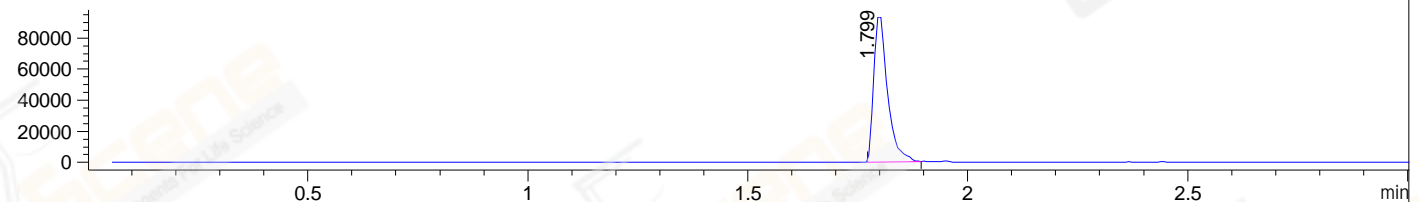
DAD1 C, Sig=254,4 Ref=off



MSD1 TIC, MS File ES-API, Pos, Scan, Frag: 70



Ion 361, MSD1 361, Target Mass 360 +H Positive, EIC=360.7:361.7



Integration Results for DAD1 B, Sig=214,4 Ref=off

RetTim	Width	Area	Height	Area%	MS (+)
1.78	0.02	2916.13	2331.25	99.70	361
1.89	0.03	8.76	5.56	0.30	377

Integration Results for DAD1 C, Sig=254,4 Ref=off

RetTim	Width	Area	Height	Area%	MS (+)
1.78	0.02	829.14	760.82	99.51	361
1.89	0.02	4.11	2.89	0.49	377

Integration Results for MSD1 TIC, MS File

RetTim	Width	Area	Height	Area%	MS (+)
1.80	0.04	395407.25	157428.23	100.00	361

Ret. Time: 1.80

<<<< POSITIVE SPECTRA >>>>

ES-API Positive

