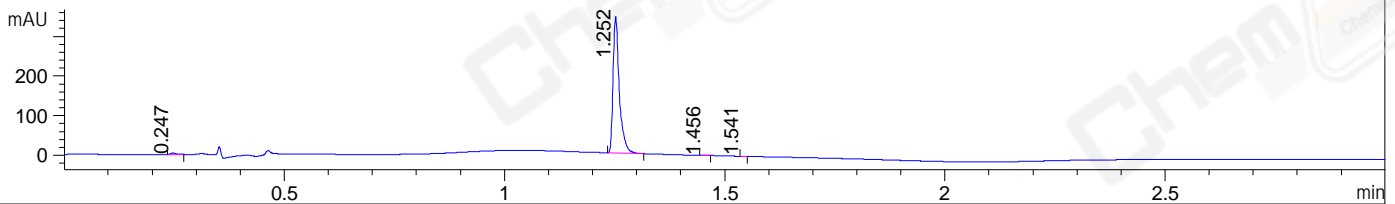
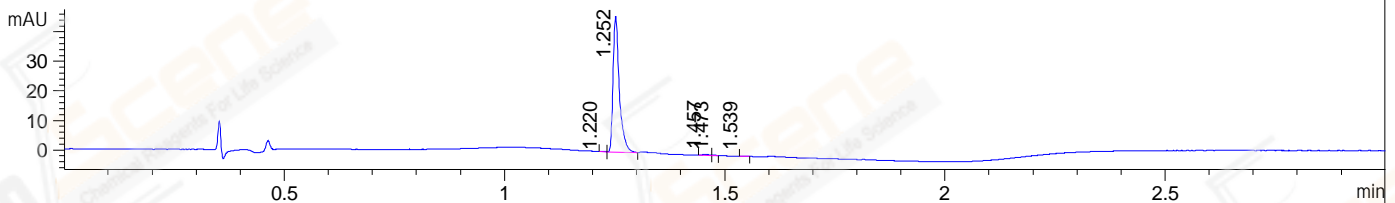


File ..190606\20190606\006-P1-C2-CDM6840-001-1-1.D Tgt Mass (CHM):  
Injection Date : 6 Jun 19 9:33 am +0800 Seq. Line : 6  
Sample Name : CDM6840-001-1-1 Location : P1-C-02  
Acq. Operator : SYSTEM Inj : 1  
Spec. Reported : MS Integration Inj Volume : 1 ul  
Acq. Method : D:\LCMS03\Data\20190606\20190606\1-POS-3MIN.M  
Analysis Method : D:\LCMS03\Data\20190606\20190606\1-POS-3MIN.M  
Catalog No : CS-6150 Batch#41782  
Method Info : Mobile Phase: A: water(0.01%TFA) B:ACN(0.01%TFA)  
Gradient: 5% to 95%B within 1.3 min  
Flow Rate :1.8ml/min  
Column :SunFire C18, 4.6\*50mm,3.5um A-RP-392  
Oven Temperature : 45C

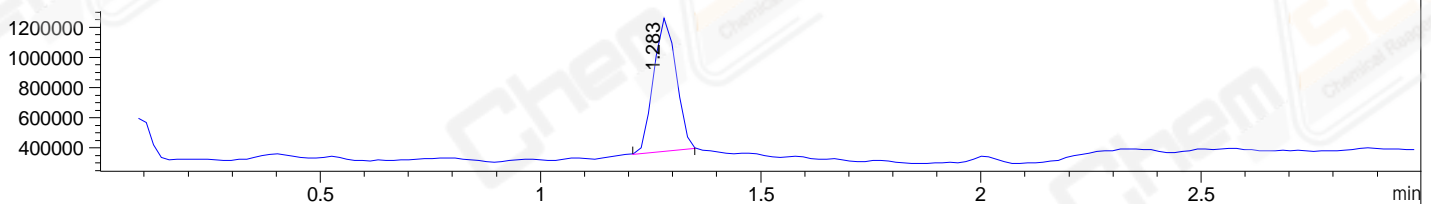
DAD1 A, Sig=214,4 Ref=off



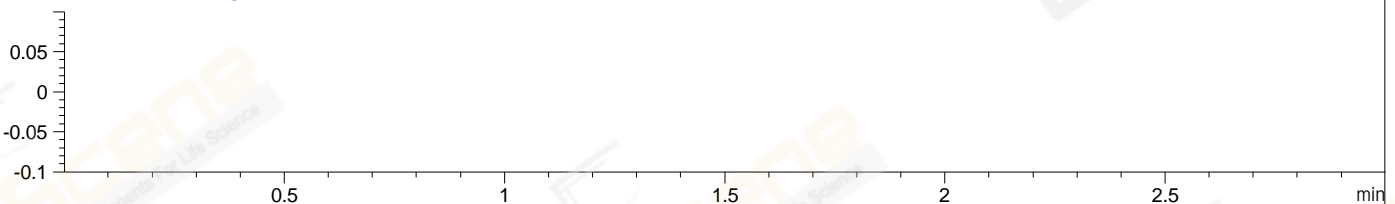
DAD1 B, Sig=254,4 Ref=off



MSD1 TIC, MS File ES-API, Pos, Scan, Frag: 70



Ion 1, MSD1 1, Target Mass 0 +H Positive, EIC=0.7:1.7



Integration Results for DAD1 A, Sig=214,4 Ref=off

RetTim	Width	Area	Height	Area%	MS (+)
0.25	0.01	2.73	3.38	0.80	145
1.25	0.01	339.06	344.87	99.06	381
1.46	0.03	0.37	0.47	0.11	114
1.54	0.03	0.10	0.17	0.03	114

Integration Results for DAD1 B, Sig=254,4 Ref=off

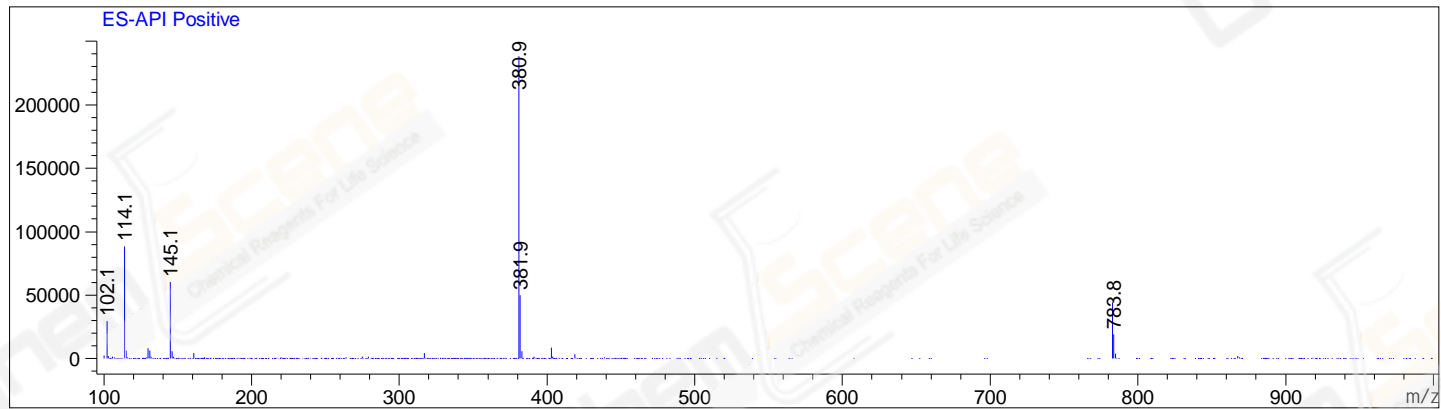
RetTim	Width	Area	Height	Area%	MS (+)
1.22	0.01	0.03	0.06	0.08	114
1.25	0.01	45.34	45.98	98.96	381
1.46	0.02	0.32	0.33	0.70	114
1.47	0.01	0.07	0.13	0.16	114
1.54	0.01	0.04	0.06	0.10	114

Integration Results for MSD1 TIC, MS File

RetTim	Width	Area	Height	Area%	MS (+)
--------	-------	------	--------	-------	--------

1.28      0.06      3130800.75      905957.25      100.00      381

Ret. Time: 1.28 <<<< POSITIVE SPECTRA >>>>



\*\*\* End of Report \*\*\*