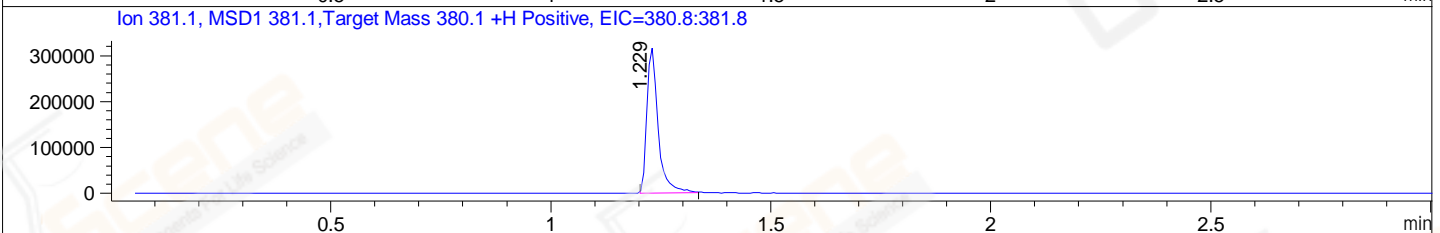
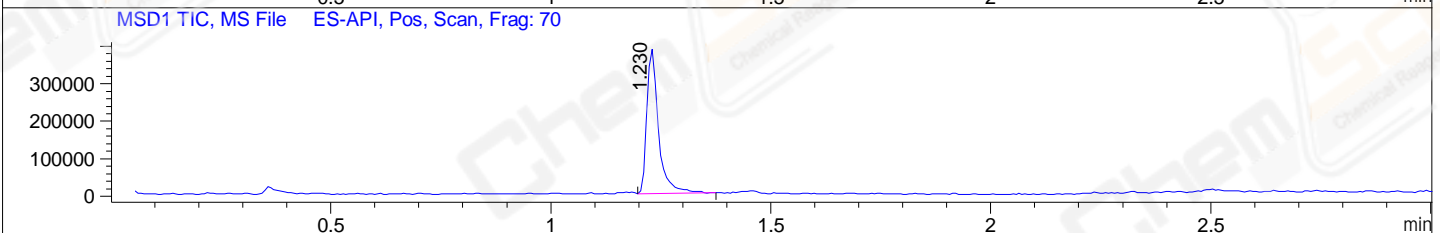
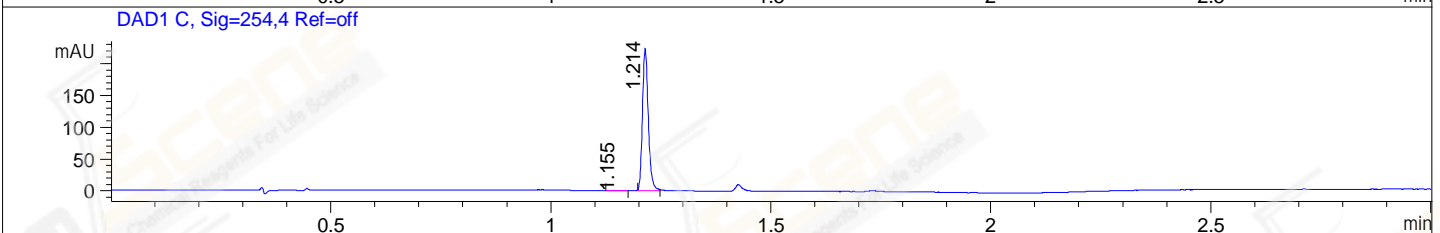
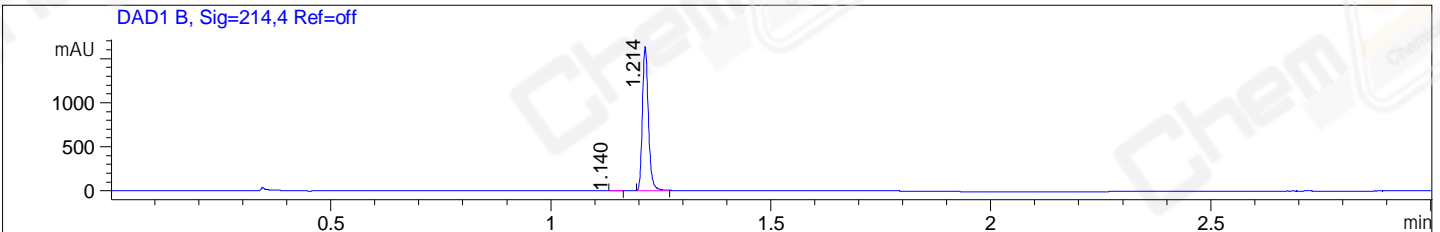


File ..1\DATA\2019\20190612\587\BIZ2019-611-WYQ2.D Tgt Mass (CHM):
 Injection Date : 12 Jun 19 11:58 am +0800 Seq. Line : 39
 Sample Name : BIZ2019-611-WYQ2 Location : P1-C-07
 Acq. Operator : ZJ_1432 Inj : 1
 Spec. Reported : MS Integration Inj Volume : 1 ul
 Acq. Method : D:\Chem32\1\data\2019\20190612\587\1-POS-3MIN.M
 Analysis Method : D:\CHEM32\1\DATA\2019\20190612\587\1-POS-3MIN.M
 Catalog No : CS-6150 Batch#41951
 Method Info : Mobile Phase: A: water(0.01%TFA) B:ACN(0.01%TFA)
 Gradient: 5% to 95%B within 1.3 min
 Flow Rate :1.8ml/min
 Column :SunFire C18, 4.6*50mm,3.5um A-RP-433
 Oven Temperature : 45□



Integration Results for DAD1 B, Sig=214,4 Ref=off

RetTim	Width	Area	Height	Area%	MS (+)
1.14	0.01	1.25	1.45	0.08	122
1.21	0.01	1543.11	1635.67	99.92	381

Integration Results for DAD1 C, Sig=254,4 Ref=off

RetTim	Width	Area	Height	Area%	MS (+)
1.16	0.03	0.81	0.48	0.39	122
1.21	0.01	205.73	223.86	99.61	381

Integration Results for MSD1 TIC, MS File

RetTim	Width	Area	Height	Area%	MS (+)
1.23	0.03	708764.75	386626.00	100.00	381

Ret. Time: 1.23

<<<< POSITIVE SPECTRA >>>>

ES-API Positive

