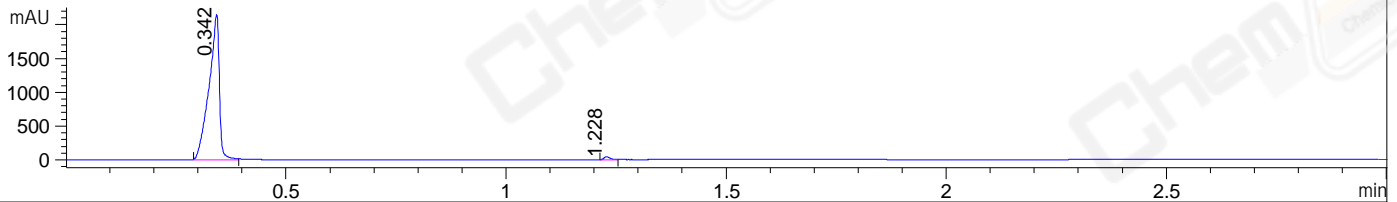
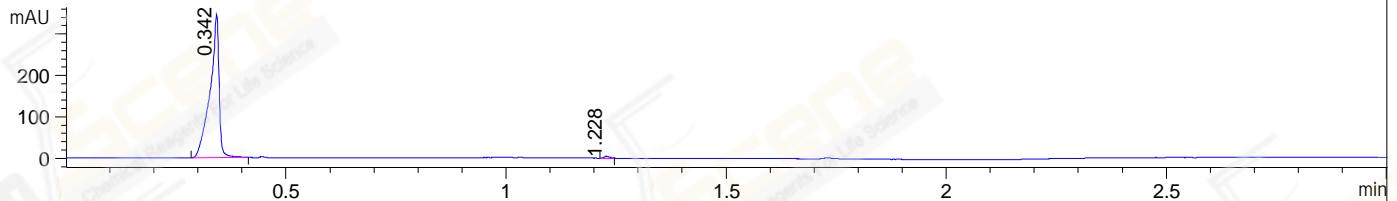


File ..1\DATA\2019\20190611\583\BIZ2019-610-WYQ2.D Tgt Mass (CHM):
 Injection Date : 11 Jun 19 10:40 am +0800 Seq. Line : 28
 Sample Name : BIZ2019-610-WYQ2 Location : P1-D-04
 Acq. Operator : ZJ_1432 Inj : 1
 Spec. Reported : MS Integration Inj Volume : 1 ul
 Acq. Method : D:\Chem32\1\data\2019\20190611\583\1-POS-3MIN.M
 Analysis Method : D:\CHEM32\1\DATA\2019\20190611\583\1-POS-3MIN.M
 Catalog No : CS-0013171 Batch#41987
 Method Info : Mobile Phase: A: water(0.01%TFA) B:ACN(0.01%TFA)
 Gradient: 5% to 95%B within 1.3 min
 Flow Rate :1.8ml/min
 Column :SunFire C18, 4.6*50mm,3.5um A-RP-433
 Oven Temperature : 45□

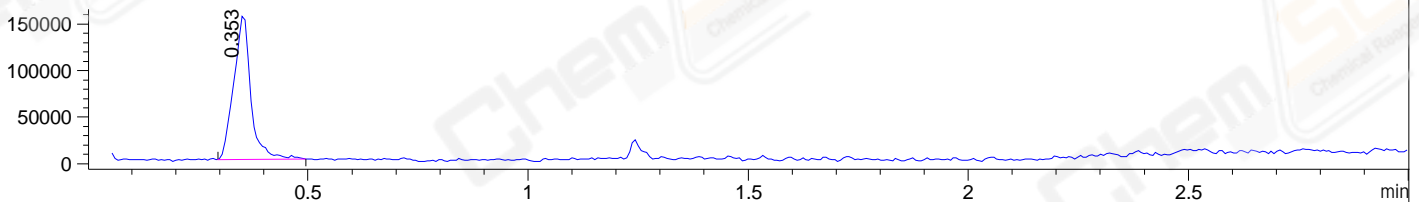
DAD1 B, Sig=214,4 Ref=off



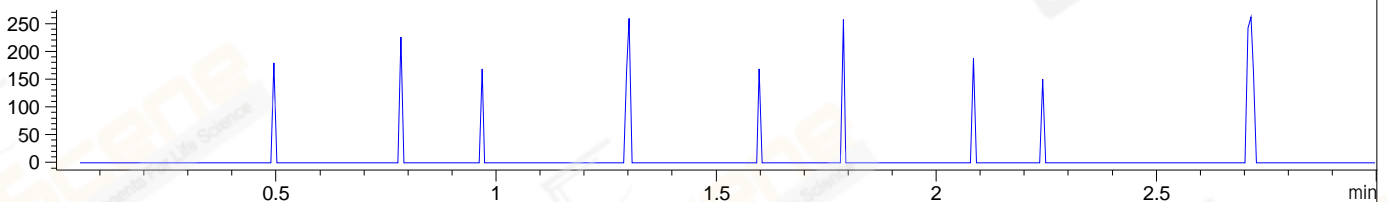
DAD1 C, Sig=254,4 Ref=off



MSD1 TIC, MS File ES-API, Pos, Scan, Frag: 70



Ion 213, MSD1 213, Target Mass 212 +H Positive, EIC=212.7:213.7



Integration Results for DAD1 B, Sig=214,4 Ref=off

RetTim	Width	Area	Height	Area%	MS (+)
0.34	0.03	3542.18	2153.23	98.88	177
1.23	0.01	40.21	44.69	1.12	267

Integration Results for DAD1 C, Sig=254,4 Ref=off

RetTim	Width	Area	Height	Area%	MS (+)
0.34	0.02	492.54	345.85	99.19	177
1.23	0.01	4.01	4.59	0.81	267

Integration Results for MSD1 TIC, MS File

RetTim	Width	Area	Height	Area%	MS (+)
0.35	0.04	419433.72	155094.41	100.00	177

Ret. Time: 0.35

<<<< POSITIVE SPECTRA >>>>

