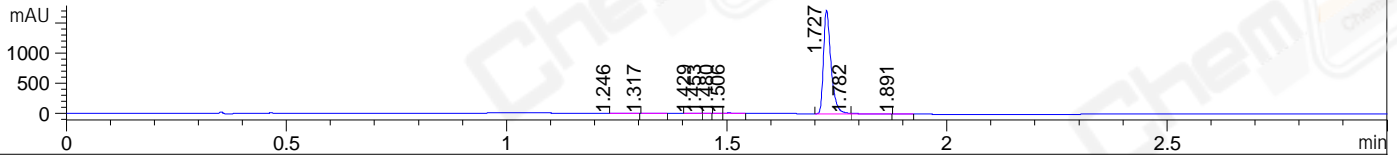
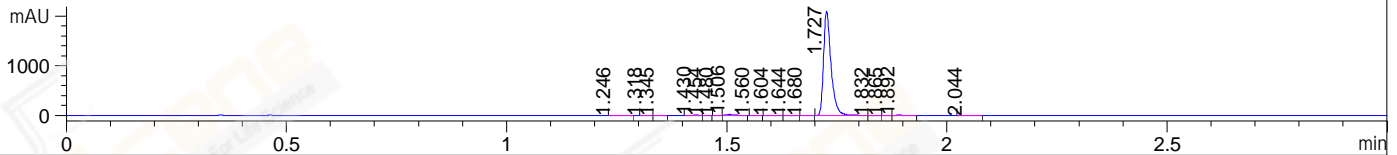


File ..Data\20190110\20190110 1\LJ2019-0110-0002.D Tgt Mass (CHM):
Injection Date : 10 Jan 19 1:55 pm +0800 Seq. Line : 13
Sample Name : LJ2019-0110-0002 Location : P1-F-10
Acq. Operator : SYSTEM Inj : 1
Spec. Reported : MS Integration Inj Volume : 1 ul
Acq. Method : D:\LCMS03\Data\20190110\20190110 1\1-POS-3MIN.M
Analysis Method : D:\LCMS03\Data\20190110\20190110 1\1-POS-3MIN.M
Catalog No : CS-M2455 Batch#42010
Method Info : Mobile Phase: A: water(0.01%TFA) B:ACN(0.01%TFA)
Gradient: 5% to 95%B within 1.3 min
Flow Rate :1.8ml/min
Column :SunFire C18, 4.6*50mm,3.5um A-RP-186
Oven Temperature : 45C

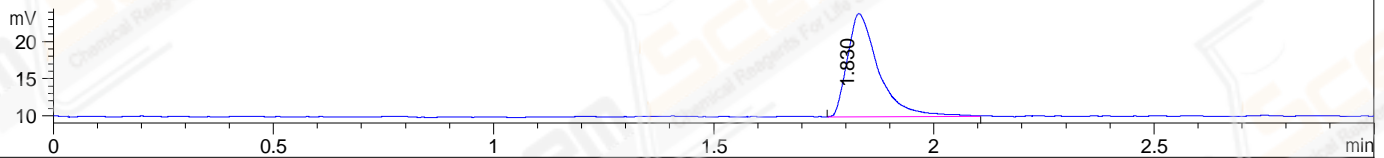
DAD1 A, Sig=214,4 Ref=off



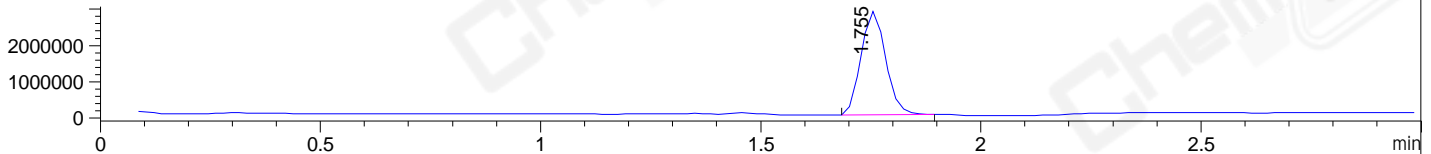
DAD1 B, Sig=254,4 Ref=off



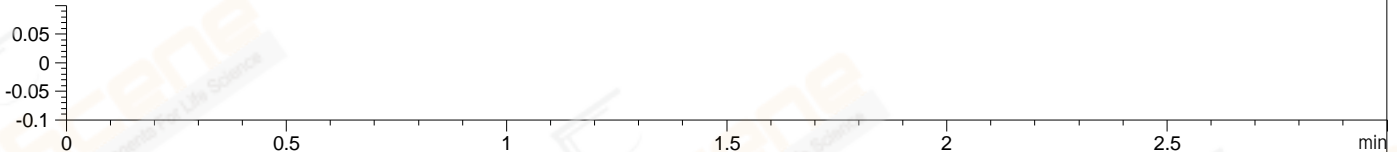
ELS1 A, ELSD Signal



MSD1 TIC, MS File ES-API, Pos, Scan, Frag: 70



Ion 1, MSD1 1, Target Mass 0 +H Positive, EIC=0.7:1.7



Integration Results for DAD1 A, Sig=214,4 Ref=off

RetTim	Width	Area	Height	Area%	MS (+)
1.25	0.02	1.20	0.99	0.06	130
1.32	0.03	1.08	0.58	0.05	130
1.43	0.02	3.01	2.52	0.15	130
1.45	0.01	0.45	0.69	0.02	130
1.48	0.01	0.76	1.00	0.04	130
1.51	0.02	8.05	7.83	0.39	130
1.73	0.02	2024.87	1719.94	98.61	373
1.78	0.02	10.29	7.67	0.50	373
1.89	0.02	3.78	3.42	0.18	130

Integration Results for DAD1 B, Sig=254,4 Ref=off

RetTim	Width	Area	Height	Area%	MS (+)
1.25	0.02	0.61	0.61	0.02	130
1.32	0.01	0.39	0.44	0.02	130
1.35	0.01	0.37	0.43	0.01	130
1.43	0.02	2.52	2.53	0.10	130
1.45	0.01	0.72	1.06	0.03	130

1.48	0.01	0.76	1.12	0.03	130
1.51	0.02	16.23	15.15	0.65	130
1.56	0.01	0.12	0.12	0.00	130
1.60	0.02	0.41	0.40	0.02	130
1.64	0.02	0.28	0.25	0.01	130
1.68	0.02	0.29	0.30	0.01	373
1.73	0.02	2462.70	2099.81	98.79	373
1.83	0.02	0.51	0.42	0.02	373
1.86	0.01	0.43	0.57	0.02	373
1.89	0.02	5.22	4.72	0.21	130
2.04	0.02	1.24	0.99	0.05	130

Integration Results for ELS1 A, ELSD Signal

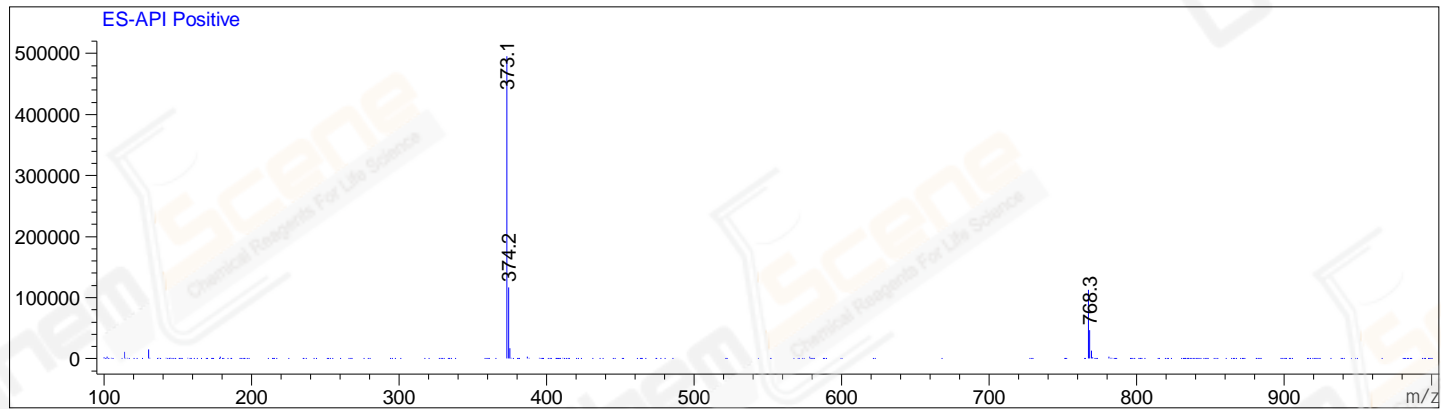
RetTim	Width	Area	Height	Area%	MS (+)
1.83	0.07	68.00	13.90	100.00	373

Integration Results for MSD1 TIC, MS File

RetTim	Width	Area	Height	Area%	MS (+)
1.75	0.06	11163559.00	2853942.25	100.00	373

Ret. Time: 1.75

<<<< POSITIVE SPECTRA >>>>



*** End of Report ***