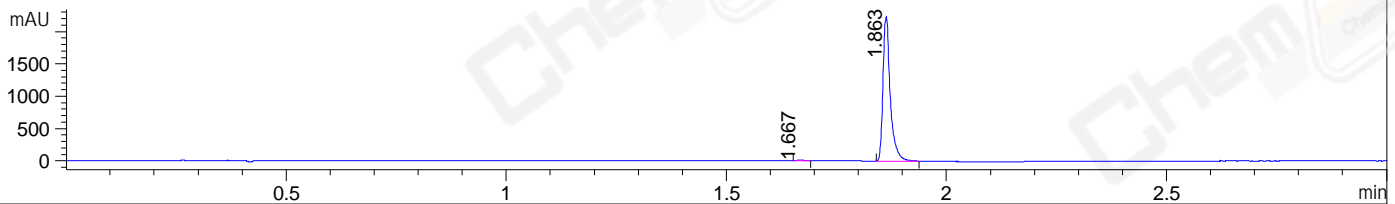
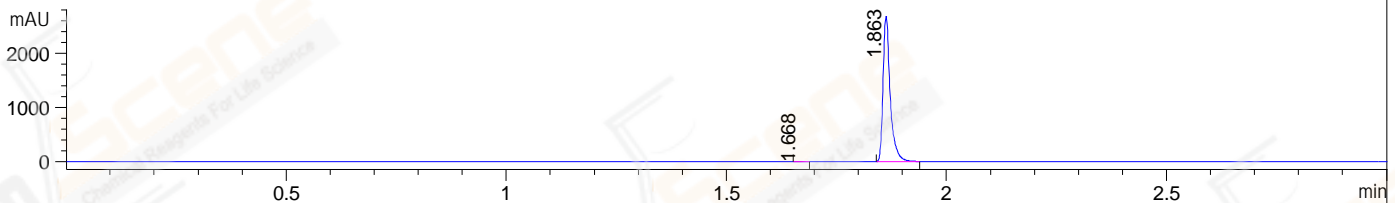


File ..1\DATA\2019\20190614\593\BIZ2019-613-CXL3.D Tgt Mass (CHM):
 Injection Date : 14 Jun 19 1:54 pm +0800 Seq. Line : 65
 Sample Name : BIZ2019-613-CXL3 Location : P2-F-06
 Acq. Operator : ZJ_1432 Inj : 1
 Spec. Reported : MS Integration Inj Volume : 1 ul
 Acq. Method : D:\Chem32\1\data\2019\20190614\593\1-POS-3MIN.M
 Analysis Method : D:\CHEM32\1\DATA\2019\20190614\593\1-POS-3MIN.M
 Catalog No : CS-0065882 Batch#42191
 Method Info : Mobile Phase: A: water(0.01%TFA) B:ACN(0.01%TFA)
 Gradient: 5% to 95%B within 1.3 min
 Flow Rate :1.8ml/min
 Column :SunFire C18, 4.6*50mm,3.5um A-RP-433
 Oven Temperature : 45□

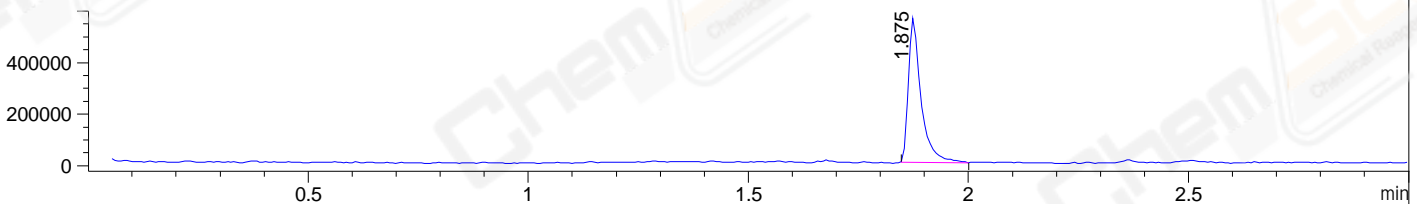
DAD1 B, Sig=214,4 Ref=off



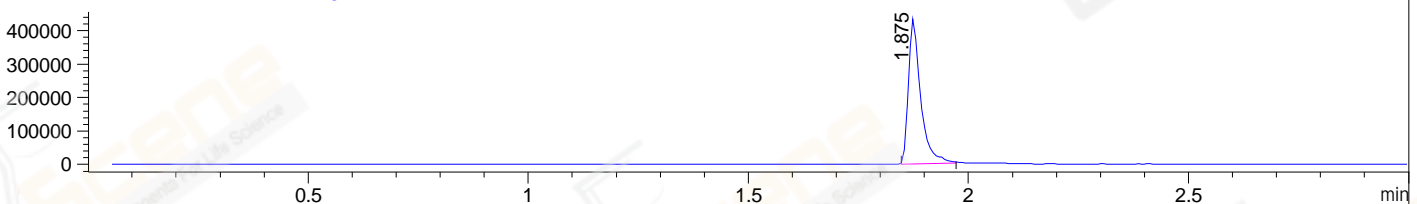
DAD1 C, Sig=254,4 Ref=off



MSD1 TIC, MS File ES-API, Pos, Scan, Frag: 70



Ion 372.1, MSD1 372.1, Target Mass 371.1 +H Positive, EIC=371.8:372.8



Integration Results for DAD1 B, Sig=214,4 Ref=off

RetTim	Width	Area	Height	Area%	MS (+)
1.67	0.01	10.95	11.34	0.42	157
1.86	0.02	2582.57	2237.54	99.58	372

Integration Results for DAD1 C, Sig=254,4 Ref=off

RetTim	Width	Area	Height	Area%	MS (+)
1.67	0.02	3.57	3.81	0.12	157
1.86	0.02	3057.35	2683.85	99.88	372

Integration Results for MSD1 TIC, MS File

RetTim	Width	Area	Height	Area%	MS (+)
1.87	0.03	1130447.88	560968.00	100.00	372

Ret. Time: 1.87

<<<< POSITIVE SPECTRA >>>>

ES-API Positive

