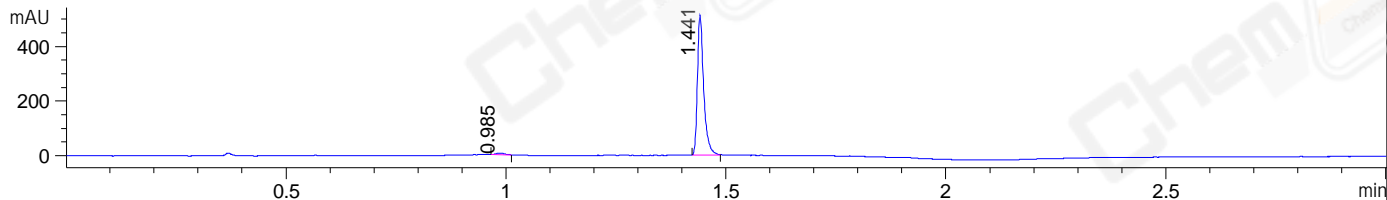
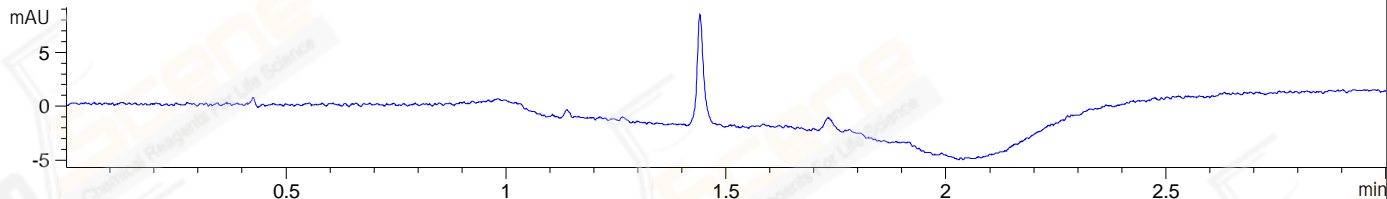


File ..1\DATA\2019\20190615\590\BIZ2019-614-WYQ8.D Tgt Mass (CHM):
Injection Date : 15 Jun 19 10:44 am +0800 Seq. Line : 25
Sample Name : BIZ2019-614-WYQ8 Location : P2-B-02
Acq. Operator : ZJ_1432 Inj : 1
Spec. Reported : MS Integration Inj Volume : 1 ul
Acq. Method : D:\Chem32\1\data\2019\20190615\590\1-POS-3MIN.M
Analysis Method : D:\CHEM32\1\DATA\2019\20190615\590\1-POS-3MIN.M
Catalog No : CS-0094774 Batch#42268
Method Info : Mobile Phase: A: water(0.01%TFA) B:ACN(0.01%TFA)
Gradient: 5% to 95%B within 1.3 min
Flow Rate :1.8ml/min
Column :SunFire C18, 4.6*50mm,3.5um A-RP-433
Oven Temperature : 45□

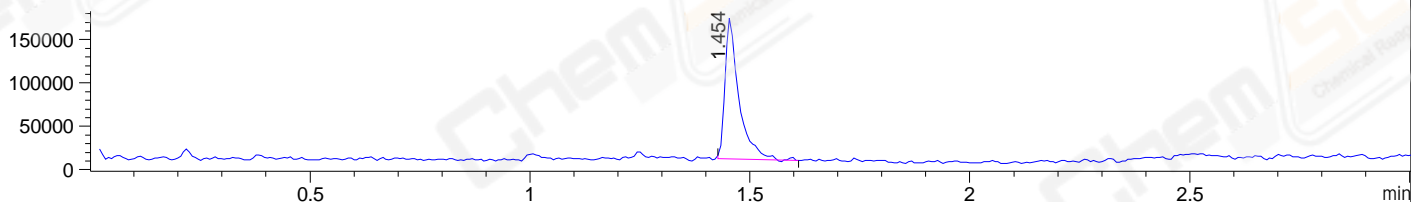
DAD1 B, Sig=214,4 Ref=off



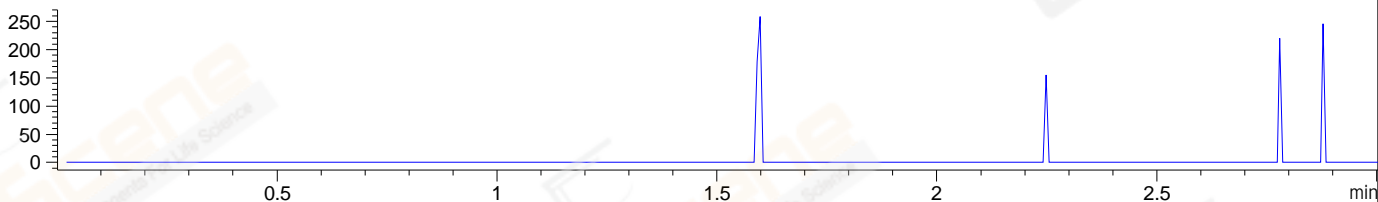
DAD1 C, Sig=254,4 Ref=off



MSD1 TIC, MS File ES-API, Pos, Scan, Frag: 70



Ion 551.1, MSD1 551.1, Target Mass 550.1 +H Positive, EIC=550.8:551.8



Integration Results for DAD1 B, Sig=214,4 Ref=off

RetTim	Width	Area	Height	Area%	MS (+)
0.99	0.02	9.02	6.21	1.73	157
1.44	0.01	511.36	514.99	98.27	381

Integration Results for DAD1 C, Sig=254,4 Ref=off

RetTim	Width	Area	Height	Area%	MS (+)
--------	-------	------	--------	-------	--------

Integration Results for MSD1 TIC, MS File

RetTim	Width	Area	Height	Area%	MS (+)
1.45	0.03	360073.22	162469.11	100.00	381

Ret. Time: 1.45

<<<< POSITIVE SPECTRA >>>>

ES-API Positive

