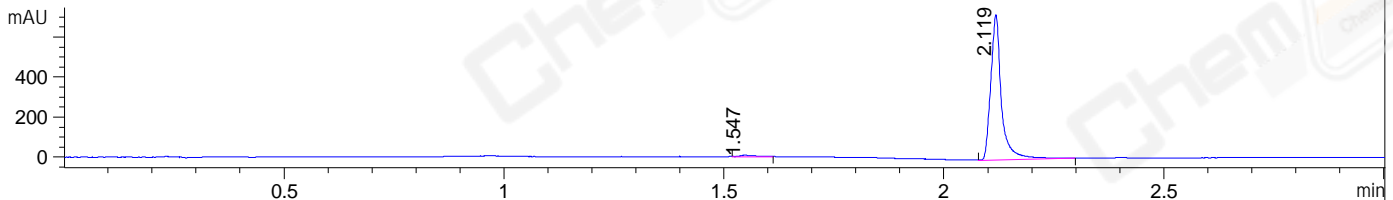
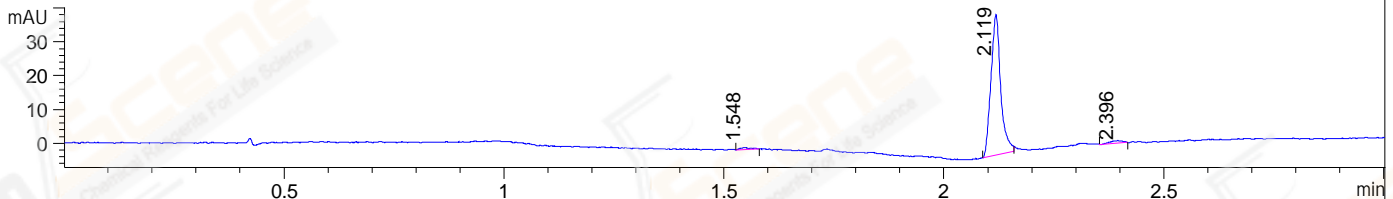


File ..\DATA\2019\20190626\615\BIZ2019-625-WYQ1.D Tgt Mass (CHM):  
 Injection Date : 26 Jun 19 11:02 am +0800 Seq. Line : 18  
 Sample Name : BIZ2019-625-WYQ1 Location : P1-A-01  
 Acq. Operator : ZJ\_1432 Inj : 1  
 Spec. Reported : MS Integration Inj Volume : 3 ul  
 Acq. Method : D:\Chem32\1\data\2019\20190626\615\1-POS-3MIN.M  
 Analysis Method : D:\CHEM32\1\DATA\2019\20190626\615\1-POS-3MIN.M  
 Catalog No : CS-3019 Batch# 42620  
 Method Info : Mobile Phase: A: water(0.01%TFA) B:ACN(0.01%TFA)  
 Gradient: 5% to 95%B within 1.3 min  
 Flow Rate :1.8ml/min  
 Column :SunFire C18, 4.6\*50mm,3.5um A-RP-433  
 Oven Temperature : 45□

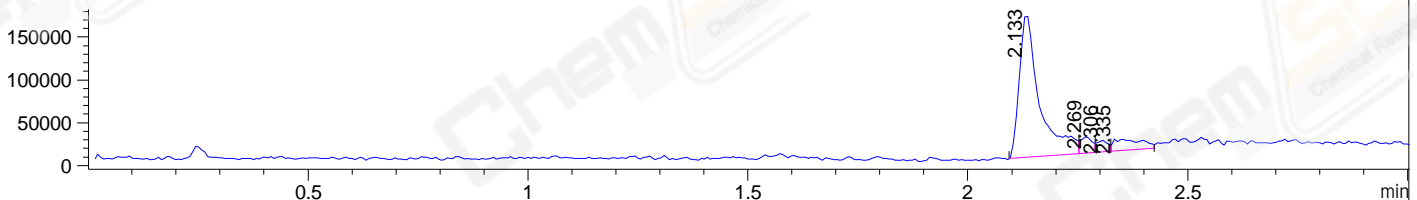
DAD1 B, Sig=214,4 Ref=off



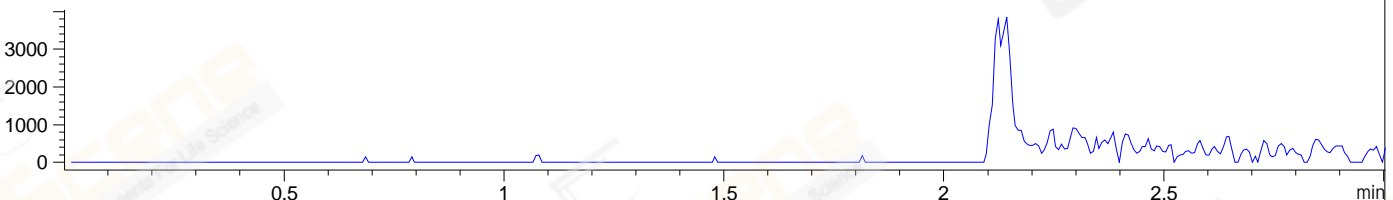
DAD1 C, Sig=254,4 Ref=off



MSD1 TIC, MS File ES-API, Pos, Scan, Frag: 70



Ion 383.1, MSD1 383.1, Target Mass 382.1 +H Positive, EIC=382.8:383.8



Integration Results for DAD1 B, Sig=214,4 Ref=off

RetTim	Width	Area	Height	Area%	MS (+)
1.55	0.04	18.16	7.24	1.47	232
2.12	0.03	1220.31	726.58	98.53	307

Integration Results for DAD1 C, Sig=254,4 Ref=off

RetTim	Width	Area	Height	Area%	MS (+)
1.55	0.03	0.94	0.61	1.40	232
2.12	0.02	64.06	41.68	96.06	307
2.40	0.04	1.69	0.77	2.54	307

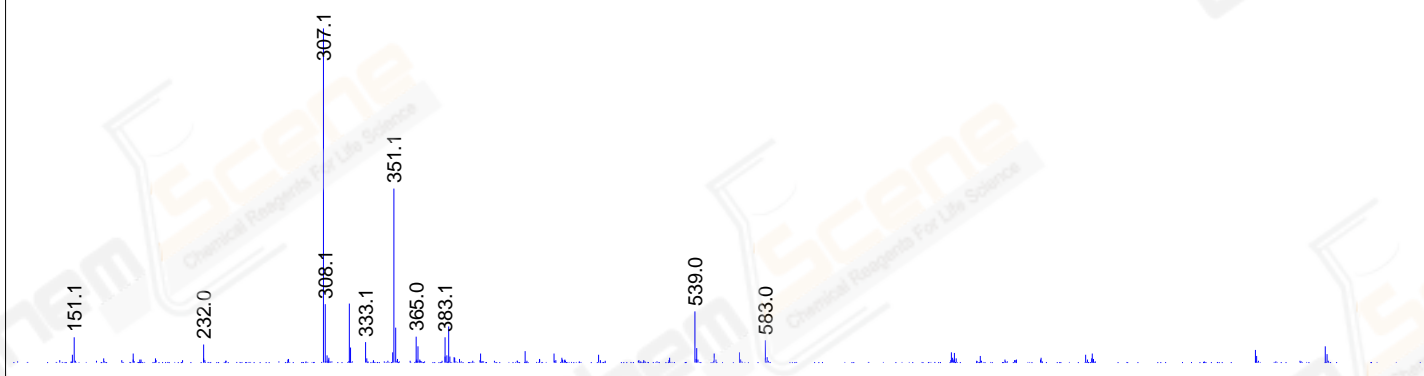
Integration Results for MSD1 TIC, MS File

RetTim	Width	Area	Height	Area%	MS (+)
2.13	0.05	529216.44	167471.27	82.15	307
2.27	0.03	33540.50	18924.85	5.21	307
2.31	0.02	23391.07	13431.75	3.63	307
2.33	0.07	58084.20	13990.81	9.02	307

Ret. Time: 2.13

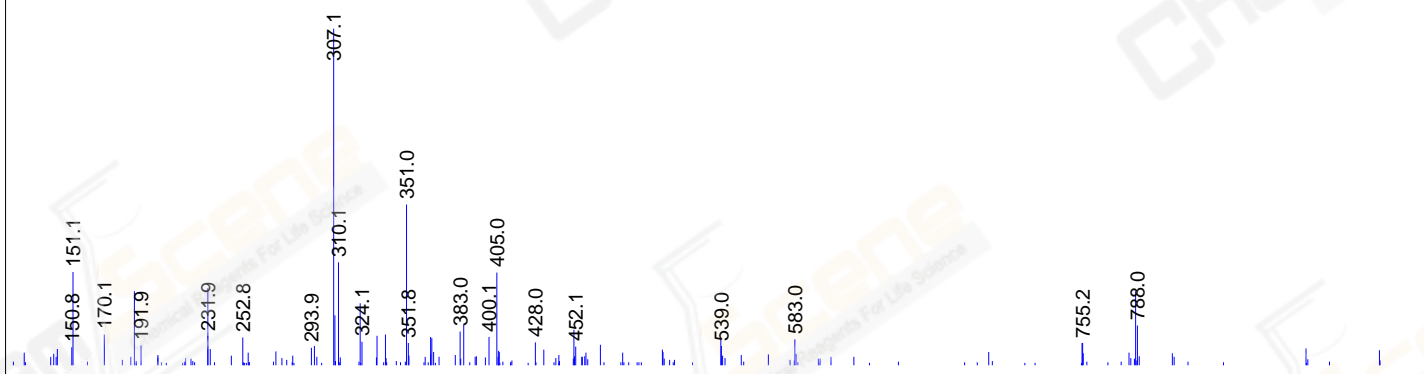
&lt;&lt;&lt;&lt; POSITIVE SPECTRA &gt;&gt;&gt;&gt;

ES-API Positive



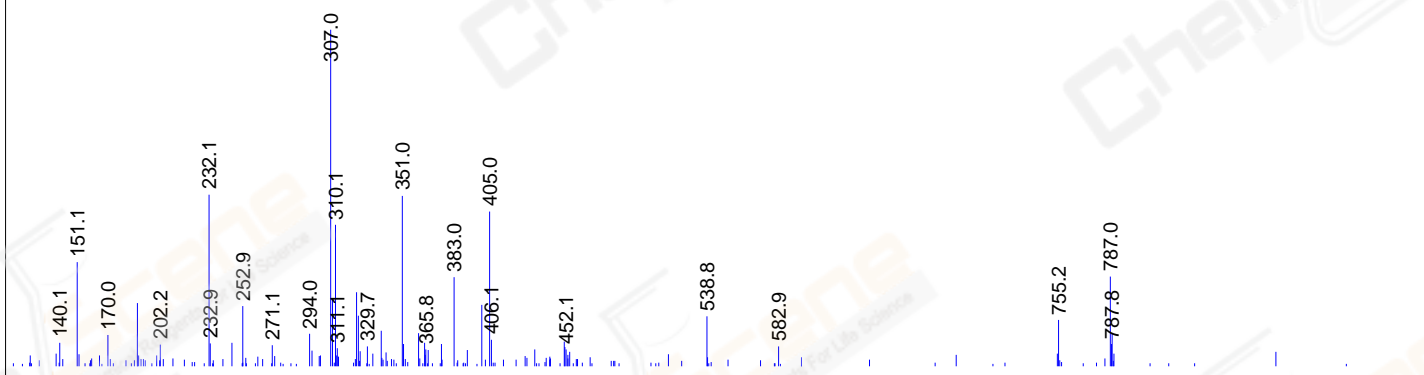
Ret. Time: 2.27

ES-API Positive



Ret. Time: 2.31

ES-API Positive



Ret. Time: 2.33

ES-API Positive

