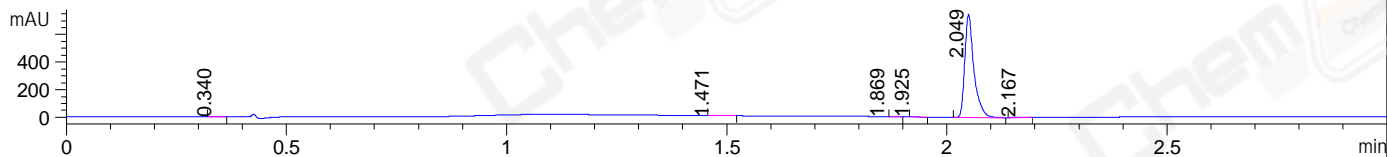
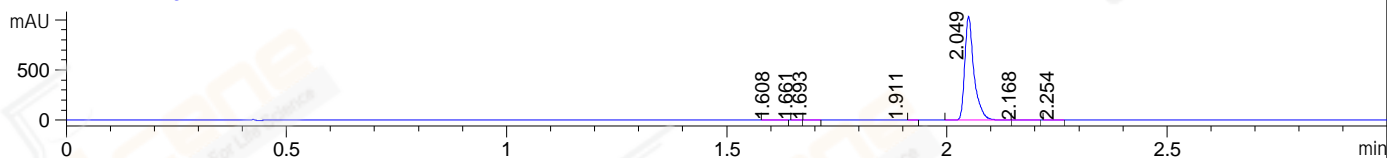


File ..03\Data\20171207\20171207-1\XWJ4623-028-1.D Tgt Mass (CHM):  
Injection Date : 7 Dec 17 3:22 pm +0800 Seq. Line : 67  
Sample Name : XWJ4623-028-1 Location : P1-C-10  
Acq. Operator : ZLJ\_587 Inj : 1  
Spec. Reported : MS Integration Inj Volume : 1 ul  
Acq. Method : D:\LCMS03\Data\20171207\20171207-1\1-POS-3MIN.M  
Analysis Method : D:\LCMS03\Data\20171207\20171207-1\1-POS-3MIN.M  
Catalog No : CS-0581 Batch#42835  
Method Info : Mobile Phase: A: water(0.01%TFA) B:ACN(0.01%TFA)  
Gradient: 5% to 95%B within 1.3 min  
Flow Rate :1.8ml/min  
Column :SunFire C18, 4.6\*50mm,3.5um A-RP-186  
Oven Temperature : 45C

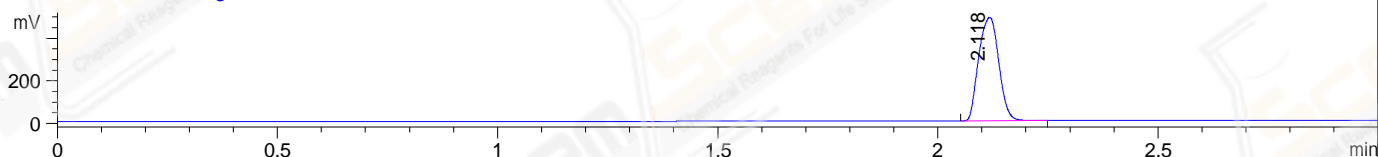
DAD1 A, Sig=214,4 Ref=off



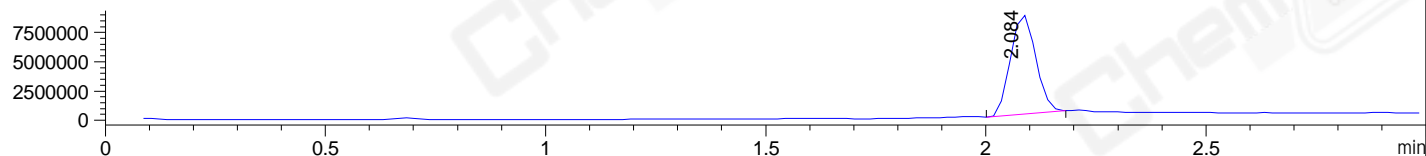
DAD1 B, Sig=254,4 Ref=off



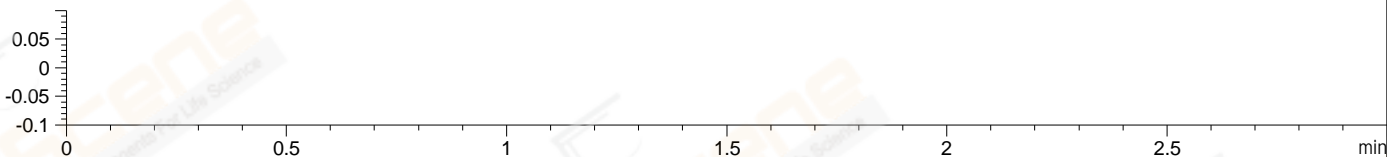
ELS1 A, ELSD Signal



MSD1 TIC, MS File ES-API, Pos, Scan, Frag: 70



Ion 1, MSD1 1, Target Mass 0 +H Positive, EIC=0.7:1.7



Integration Results for DAD1 A, Sig=214,4 Ref=off

RetTim	Width	Area	Height	Area%	MS (+)
0.34	0.03	2.01	1.20	0.18	303
1.47	0.02	1.45	0.84	0.13	233
1.87	0.02	0.52	0.11	0.05	233
1.92	0.03	1.31	0.81	0.12	233
2.05	0.02	1083.01	746.75	99.31	457
2.17	0.02	2.27	1.51	0.21	457

Integration Results for DAD1 B, Sig=254,4 Ref=off

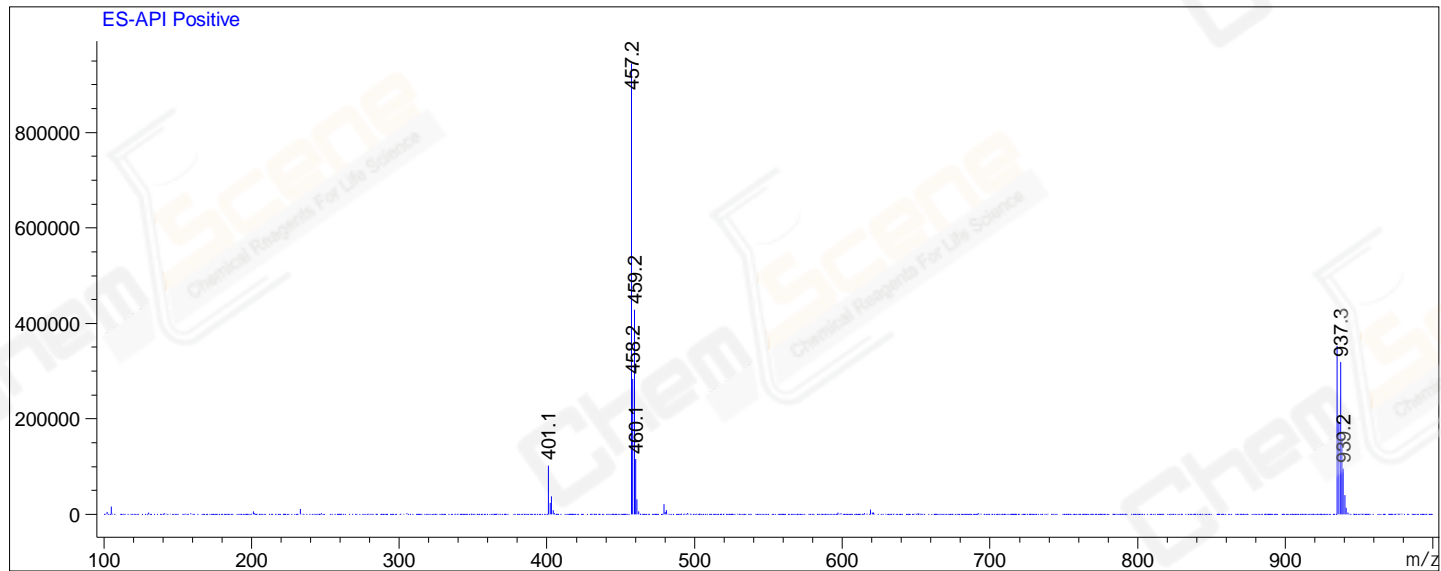
RetTim	Width	Area	Height	Area%	MS (+)
1.61	0.03	0.99	0.55	0.07	485
1.66	0.02	0.09	0.10	0.01	485
1.69	0.02	0.30	0.25	0.02	233
1.91	0.02	0.65	0.11	0.04	233
2.05	0.02	1497.26	1030.29	99.71	457
2.17	0.02	2.08	1.60	0.14	457
2.25	0.02	0.22	0.14	0.01	105

## Integration Results for MSD1 TIC, MS File

RetTim	Width	Area	Height	Area%	MS(+)
2.08	0.06	33849536.00	8500427.00	100.00	457

Ret. Time: 2.08

<<<< POSITIVE SPECTRA >>>>



\*\*\* End of Report \*\*\*