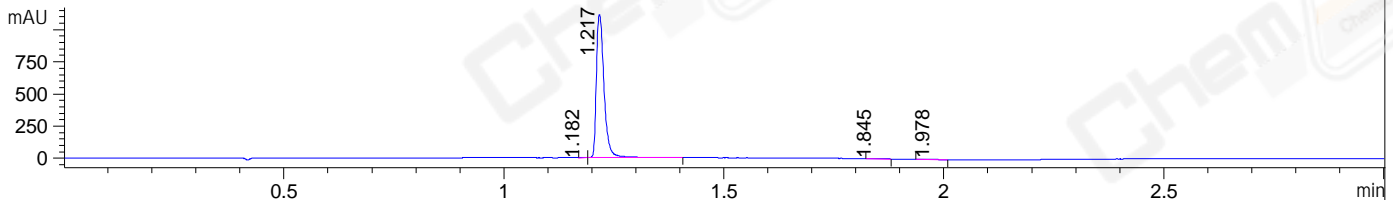
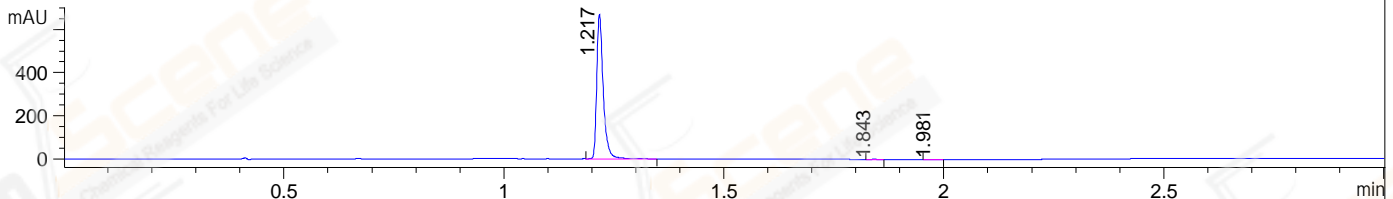


File ..1\DATA\2019\20190713\631\BIZ2019-712-CXL8.D Tgt Mass (CHM):
 Injection Date : 13 Jul 19 12:18 pm +0800 Seq. Line : 11
 Sample Name : BIZ2019-712-CXL8 Location : P1-A-01
 Acq. Operator : ZJ_1432 Inj : 1
 Spec. Reported : MS Integration Inj Volume : 1 ul
 Acq. Method : D:\Chem32\1\data\2019\20190713\631\1-POS-3MIN.M
 Analysis Method : D:\CHEM32\1\DATA\2019\20190713\631\1-POS-3MIN.M
 Catalog No : CS-5820 Batch#43280
 Method Info : Mobile Phase: A: water(0.01%TFA) B:ACN(0.01%TFA)
 Gradient: 5% to 95%B within 1.3 min
 Flow Rate :1.8ml/min
 Column :SunFire C18, 4.6*50mm,3.5um A-RP-433
 Oven Temperature : 45□

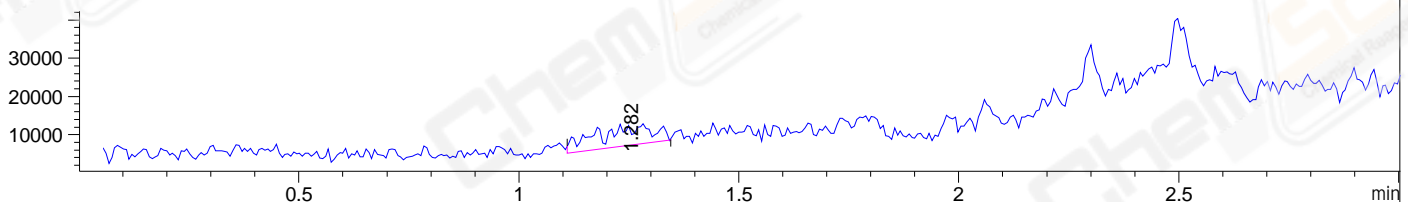
DAD1 B, Sig=214,4 Ref=off



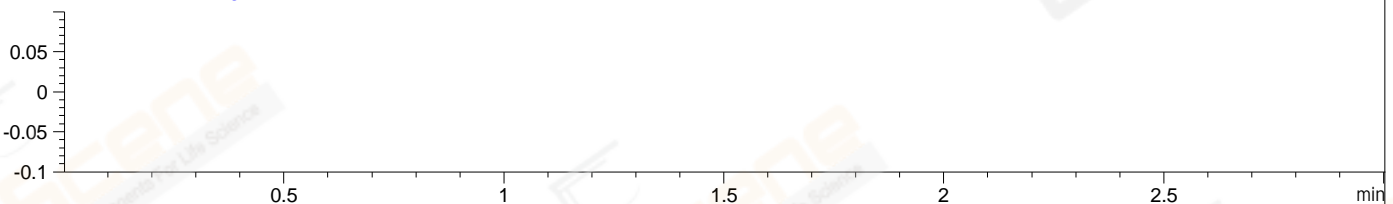
DAD1 C, Sig=254,4 Ref=off



MSD1 TIC, MS File ES-API, Pos, Scan, Frag: 70



Ion 1, MSD1 1, Target Mass 0 +H Positive, EIC=0.7:1.7



Integration Results for DAD1 B, Sig=214,4 Ref=off

RetTim	Width	Area	Height	Area%	MS (+)
1.18	0.02	1.93	1.97	0.14	ND
1.22	0.02	1355.09	1114.77	99.27	ND
1.84	0.03	3.15	1.79	0.23	ND
1.98	0.04	4.87	2.15	0.36	ND

Integration Results for DAD1 C, Sig=254,4 Ref=off

RetTim	Width	Area	Height	Area%	MS (+)
1.22	0.02	687.13	670.87	99.72	ND
1.84	0.02	0.82	0.62	0.12	ND
1.98	0.02	1.07	0.81	0.16	ND

Integration Results for MSD1 TIC, MS File

RetTim	Width	Area	Height	Area%	MS (+)
1.28	0.15	48416.19	5443.13	100.00	ND

MS Spectrum

*MSD1 SPC, time=1.230 of D:\CHEM32\1\DATA\2019\20190713\631\BIZ2019-712-CXL8.D ES-API, Pos, Scan, Frag: 70



Max: 3512