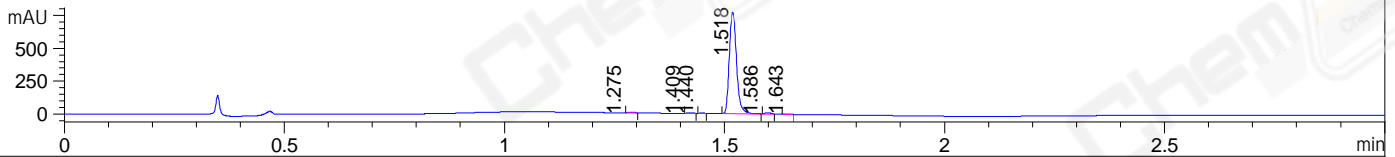
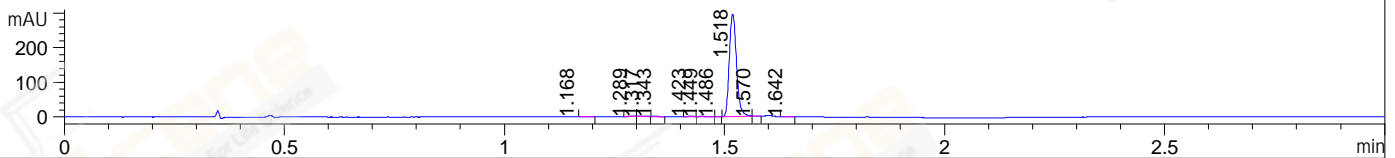


File ..ata\2018\20180806\20180806\LYF5633-036-P2.D Tgt Mass (CHM):
 Injection Date : 6 Aug 18 5:34 pm +0800 Seq. Line : 104
 Sample Name : LYF5633-036-P2 Location : P2-C-02
 Acq. Operator : SYSTEM Inj : 1
 Spec. Reported : MS Integration Inj Volume : 2 ul
 Acq. Method : D:\LCMS03\Data\2018\20180806\20180806\1-POS-3MIN.M
 Analysis Method : D:\LCMS03\Data\2018\20180806\20180806\1-POS-3MIN.M
 Catalog No : HY-U00418 Batch#43584
 Method Info : Mobile Phase: A: water(0.01%TFA) B:ACN(0.01%TFA)
 Gradient: 5% to 95%B within 1.3 min
 Flow Rate :1.8ml/min
 Column :SunFire C18, 4.6*50mm,3.5um A-RP-186
 Oven Temperature : 45C

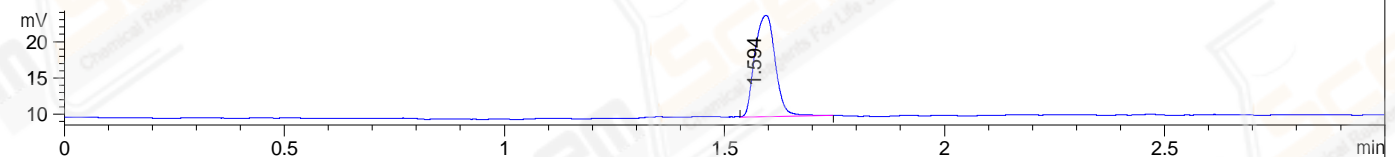
DAD1 A, Sig=214,4 Ref=off



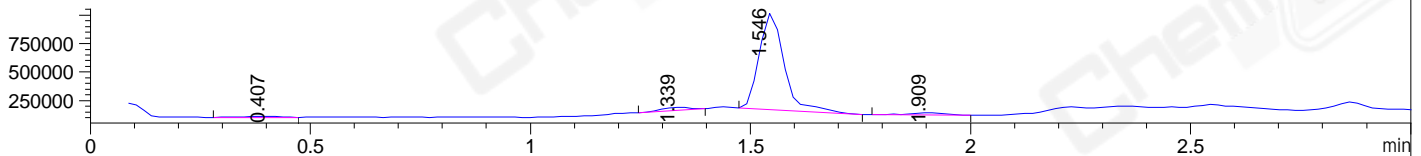
DAD1 B, Sig=254,4 Ref=off



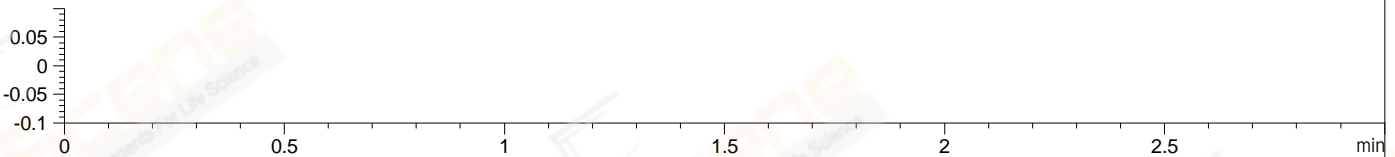
ELS1 A, ELSD Signal



MSD1 TIC, MS File ES-API, Pos, Scan, Frag: 70



Ion 1, MSD1 1, Target Mass 0 +H Positive, EIC=0.7:1.7



Integration Results for DAD1 A, Sig=214,4 Ref=off

RetTim	Width	Area	Height	Area%	MS (+)
1.27	0.02	2.79	-0.22	0.31	315
1.41	0.01	3.28	-0.19	0.37	321
1.44	0.01	1.33	-0.11	0.15	321
1.52	0.02	875.65	769.07	98.02	431
1.59	0.02	8.21	0.29	0.92	431
1.64	0.01	2.11	2.35	0.24	315

Integration Results for DAD1 B, Sig=254,4 Ref=off

RetTim	Width	Area	Height	Area%	MS (+)
1.17	0.02	0.67	0.02	0.20	315
1.29	0.02	0.69	0.75	0.20	315
1.32	0.02	0.60	0.62	0.18	315
1.34	0.02	0.55	0.57	0.16	315
1.42	0.02	1.06	1.17	0.31	321
1.45	0.01	0.86	0.95	0.25	321
1.49	0.01	0.05	0.10	0.02	315
1.52	0.02	332.94	293.76	98.28	431

1.57	0.01	0.47	0.56	0.14	431
1.64	0.02	0.85	0.89	0.25	445

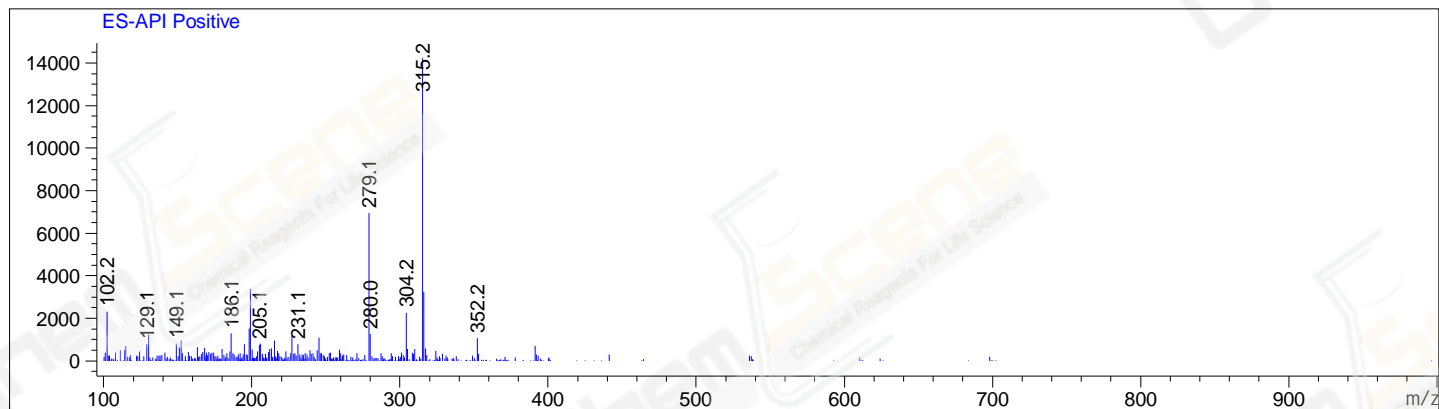
Integration Results for ELS1 A, ELSD Signal

RetTim	Width	Area	Height	Area%	MS (+)
1.59	0.05	44.86	13.90	100.00	431

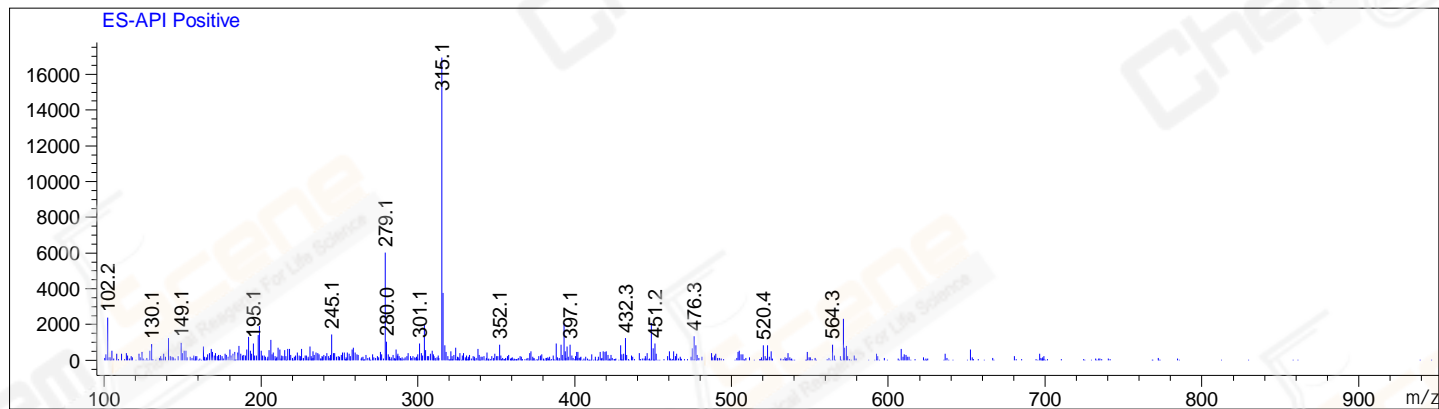
Integration Results for MSD1 TIC, MS File

RetTim	Width	Area	Height	Area%	MS (+)
0.41	0.09	64057.77	10846.17	1.78	315
1.34	0.07	116522.25	25544.28	3.25	315
1.55	0.06	3288471.00	844835.44	91.61	431
1.91	0.08	120544.47	21960.87	3.36	315

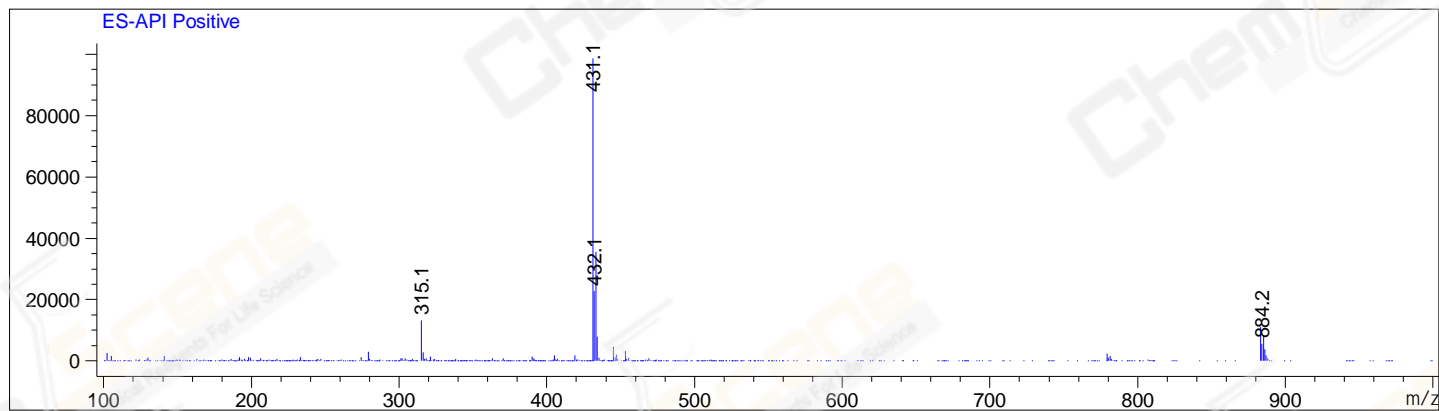
Ret. Time: 0.41 <<<< POSITIVE SPECTRA >>>>



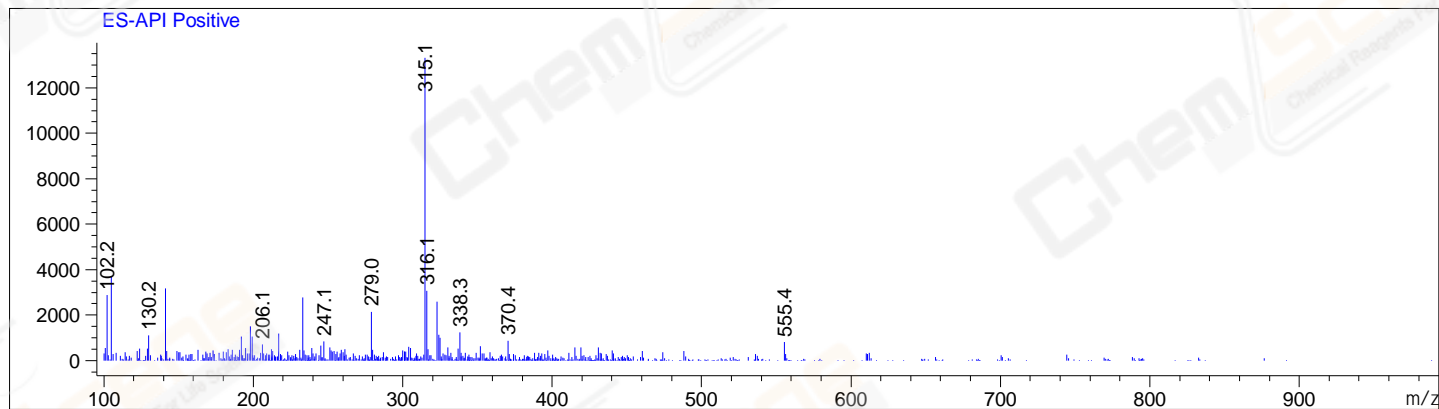
Ret. Time: 1.34



Ret. Time: 1.55



Ret. Time: 1.91



*** End of Report ***