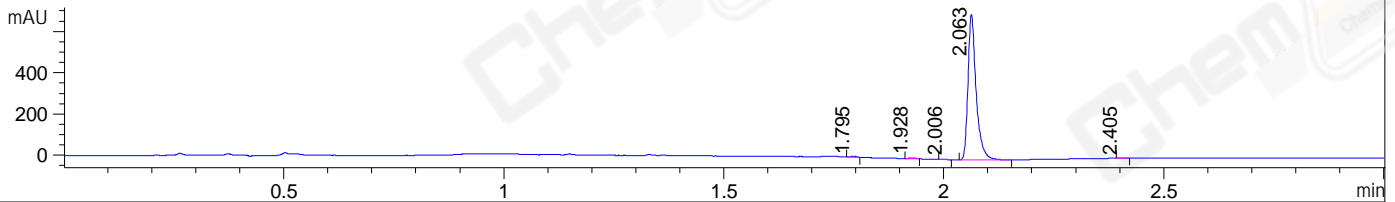
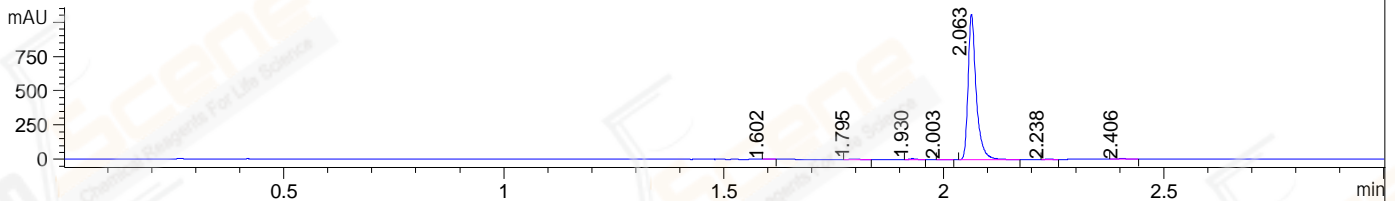


File ..\DATA\2019\20190725\658\BIZ2019-722-WYQ13.D Tgt Mass (CHM):  
 Injection Date : 25 Jul 19 4:12 pm +0800 Seq. Line : 58  
 Sample Name : BIZ2019-722-WYQ13 Location : P1-D-09  
 Acq. Operator : ZJ\_1432 Inj : 1  
 Spec. Reported : MS Integration Inj Volume : 1 ul  
 Acq. Method : D:\Chem32\1\data\2019\20190725\658\1-POS-3MIN.C2.M  
 Analysis Method : D:\CHEM32\1\DATA\2019\20190725\658\1-POS-3MIN.C2.M  
 Catalog No : CS-0581 Batch# 43812  
 Method Info : Mobile Phase: A: water(0.01%TFA) B:ACN(0.01%TFA)  
 Gradient: 5% to 95%B within 1.3 min  
 Flow Rate :1.8ml/min  
 Column :SunFire C18, 4.6\*50mm,3.5um A-RP-433  
 Oven Temperature : 45□

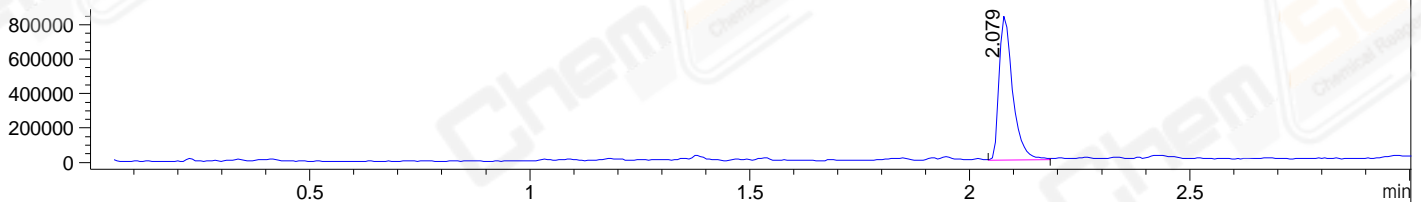
DAD1 B, Sig=214,4 Ref=off



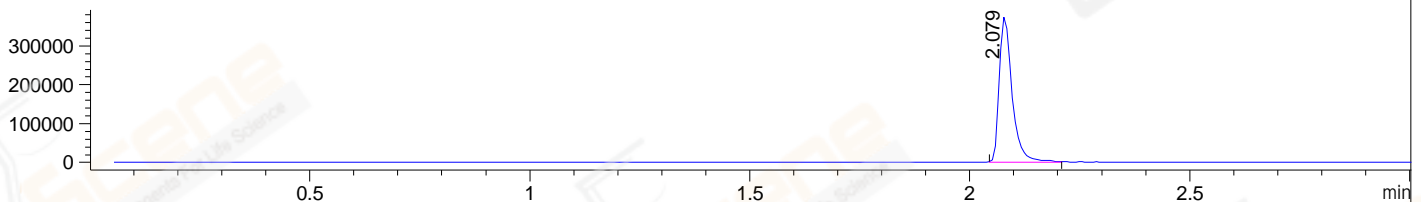
DAD1 C, Sig=254,4 Ref=off



MSD1 TIC, MS File ES-API, Pos, Scan, Frag: 70



Ion 457.1, MSD1 457.1, Target Mass 456.1 +H Positive, EIC=456.8:457.8



Integration Results for DAD1 B, Sig=214,4 Ref=off

RetTim	Width	Area	Height	Area%	MS (+)
1.79	0.01	3.50	4.03	0.38	401
1.93	0.02	4.77	4.95	0.52	429
2.01	0.02	1.76	1.86	0.19	443
2.06	0.02	912.96	706.69	98.68	457
2.40	0.02	2.18	2.11	0.24	469

Integration Results for DAD1 C, Sig=254,4 Ref=off

RetTim	Width	Area	Height	Area%	MS (+)
1.60	0.01	0.85	1.03	0.06	ND
1.80	0.02	5.03	4.53	0.36	401
1.93	0.02	8.37	7.45	0.60	429
2.00	0.02	2.62	2.53	0.19	443
2.06	0.02	1369.12	1062.17	98.39	457
2.24	0.02	1.08	0.98	0.08	457
2.41	0.02	4.48	3.20	0.32	469

Integration Results for MSD1 TIC, MS File

RetTim	Width	Area	Height	Area%	MS (+)
2.08	0.03	1794593.25	840976.94	100.00	457

Ret. Time: 2.08

<<<< POSITIVE SPECTRA >>>>

ES-API Positive

