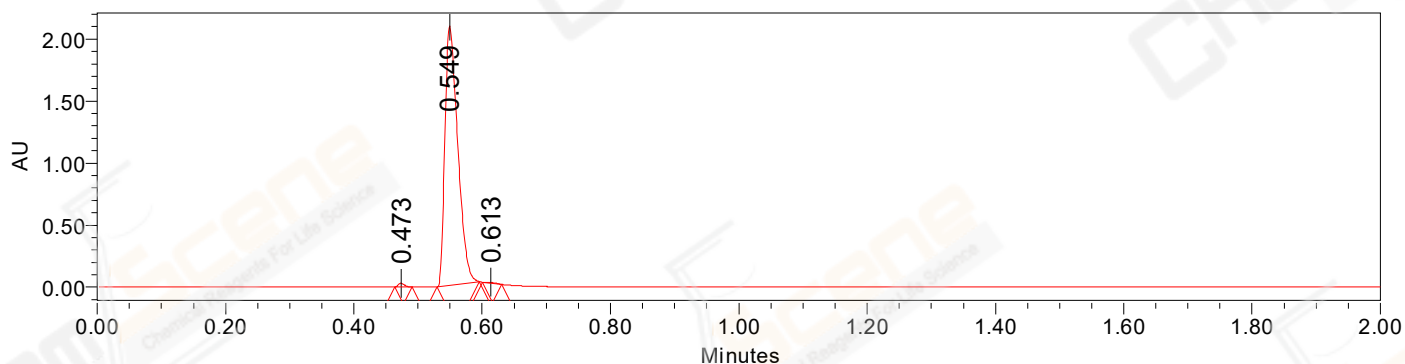


SAMPLE INFORMATION

CAS NO.: 162558-52-3
Sample information: 2:B,4
Vial: 1
Injection #: 1
Injection Volume: 0.30 ul
Run Time: 2.8 Minutes
Sample Set Name: 20220505

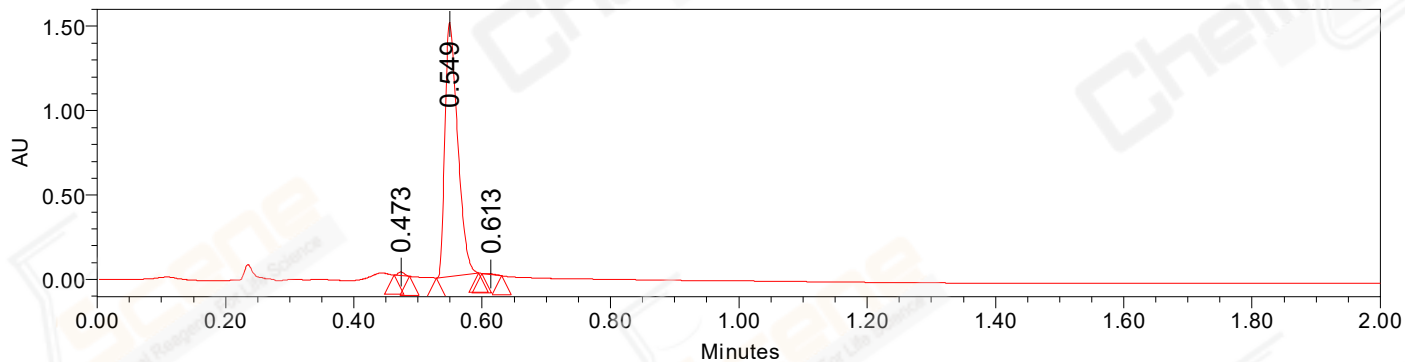
Acquired By: LY
Date Acquired: 5/5/2022 1:29:00 PM CST
Acq. Method Set: 1_POS_2MIN
Date Processed: 5/5/2022 3:11:49 PM CST,
Processing Method: PDA_01, MS_scan
Channel Name: PDA Ch1 214nm@4.8nm, MS TIC,
Column Name: A-RP-929

Auto-Scaled Chromatogram



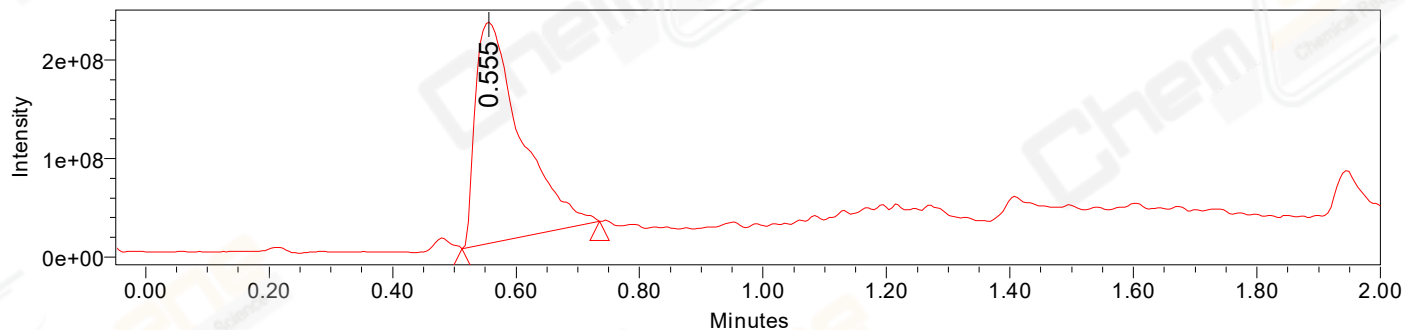
Processed Channel Descr. PDA Ch2 254nm@4.8nm

Auto-Scaled Chromatogram



Processed Channel Descr. PDA Ch1 214nm@4.8nm

Auto-Scaled Chromatogram



Processed Channel Descr. ACQ-SQD2 1: MS Scan MS TIC, Smoothed by 9 point Savitzky-Golay Filter., Time offset by -0.053 mins. (1: 150.00-1000.00 ES+, Centroid, CV=30)

Peak Results
Channel Name: PDA Ch2 254nm@4.8nm

	RT	Width (sec)	Area	Height	% Area	Base Peak (Combined) (m/z)	Channel Name
1	0.473	1.650	20455	30630	0.70	152.02	PDA Ch2 254nm@4.8nm
2	0.549	3.900	2899429	2091062	99.08	232.01	PDA Ch2 254nm@4.8nm
3	0.613	1.800	6489	6970	0.22	247.00	PDA Ch2 254nm@4.8nm

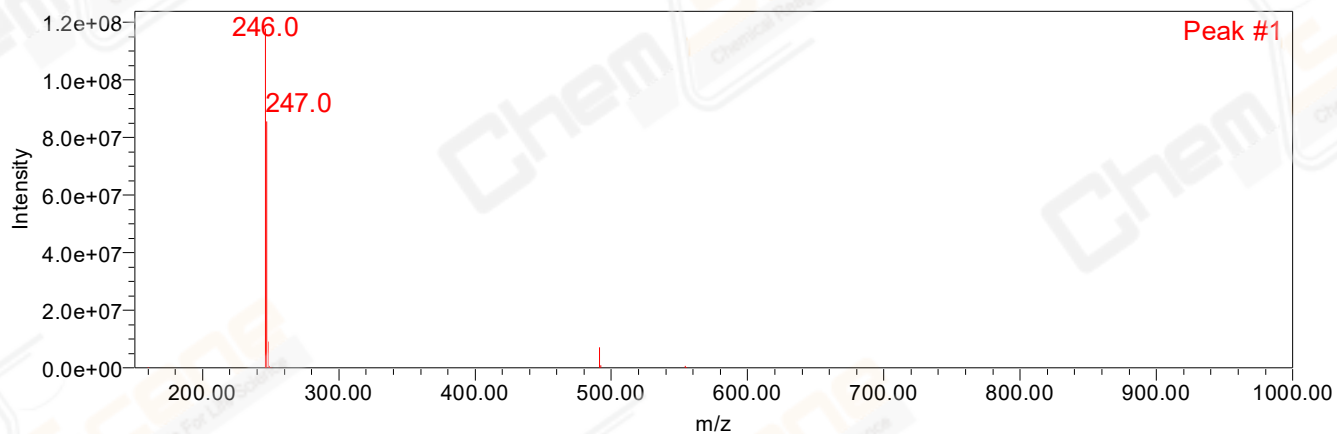
Peak Results
Channel Name: PDA Ch1 214nm@4.8nm

	RT	Width (sec)	Area	Height	% Area	Base Peak (Combined) (m/z)	Channel Name
1	0.473	1.450	14039	22692	0.68	152.07	PDA Ch1 214nm@4.8nm
2	0.549	3.950	2059284	1503881	99.10	232.01	PDA Ch1 214nm@4.8nm
3	0.613	1.900	4699	4981	0.23	247.00	PDA Ch1 214nm@4.8nm

Peak Results
Channel Name: MS TIC

	RT	Width (sec)	Area	Height	% Area	Base Peak (Combined) (m/z)	Channel Name
1	0.555	13.347	1148684025	224642324	100.00	246.01	MS TIC

Match Plot



Retention Time 0.555 Channel Name MS TIC