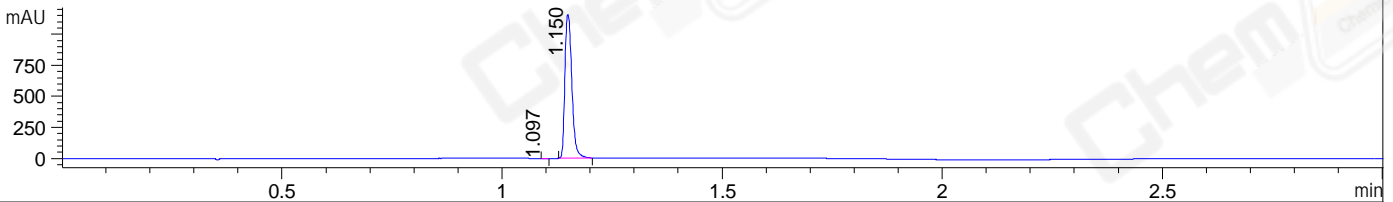
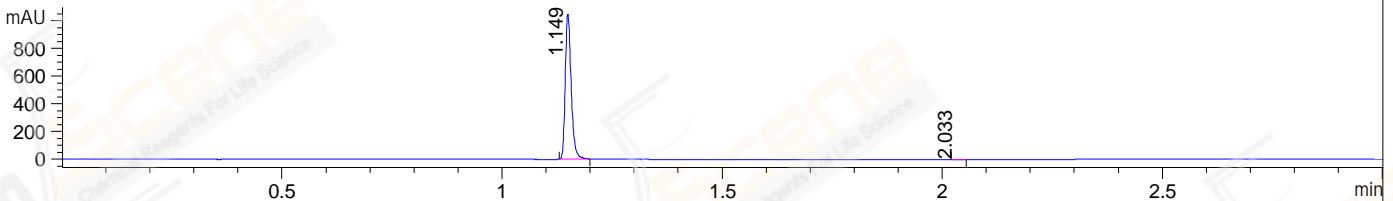


File ..1\DATA\2019\20190709\623\BIZ2019-709-CXL7.D Tgt Mass (CHM):
 Injection Date : 9 Jul 19 2:47 pm +0800 Seq. Line : 63
 Sample Name : BIZ2019-709-CXL7 Location : P1-B-03
 Acq. Operator : ZJ_1432 Inj : 1
 Spec. Reported : MS Integration Inj Volume : 1 ul
 Acq. Method : D:\Chem32\1\data\2019\20190709\623\1-POS-3MIN.M
 Analysis Method : D:\CHEM32\1\DATA\2019\20190709\623\1-POS-3MIN.M
 Catalog No : CS-1117 Batch# 44249
 Method Info : Mobile Phase: A: water(0.01%TFA) B:ACN(0.01%TFA)
 Gradient: 5% to 95%B within 1.3 min
 Flow Rate :1.8ml/min
 Column :SunFire C18, 4.6*50mm,3.5um A-RP-433
 Oven Temperature : 45□

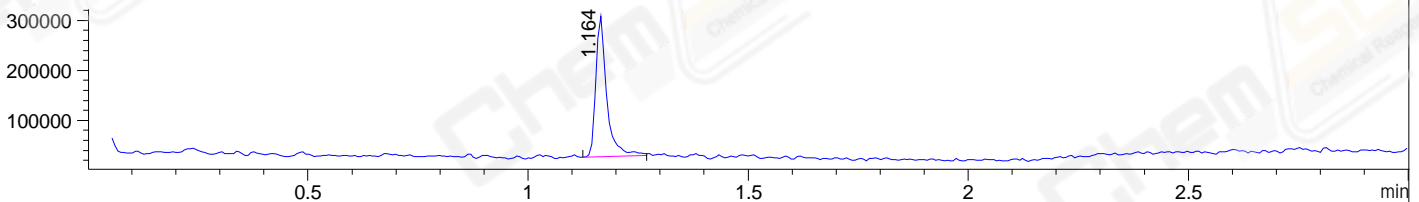
DAD1 B, Sig=214,4 Ref=off



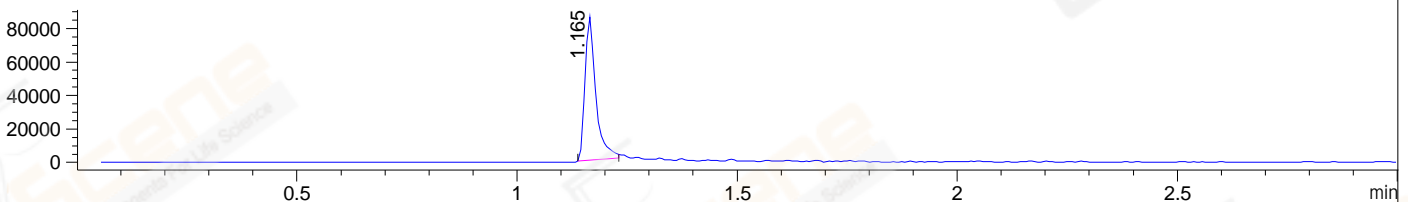
DAD1 C, Sig=254,4 Ref=off



MSD1 TIC, MS File ES-API, Pos, Scan, Frag: 70



Ion 376.08, MSD1 376.08, Target Mass 375.08 +H Positive, EIC=375.78:376.78



Integration Results for DAD1 B, Sig=214,4 Ref=off

RetTim	Width	Area	Height	Area%	MS (+)
1.10	0.01	0.42	0.68	0.03	199
1.15	0.02	1271.70	1159.10	99.97	376

Integration Results for DAD1 C, Sig=254,4 Ref=off

RetTim	Width	Area	Height	Area%	MS (+)
1.15	0.01	979.68	1047.31	99.92	376
2.03	0.02	0.74	0.80	0.08	130

Integration Results for MSD1 TIC, MS File

RetTim	Width	Area	Height	Area%	MS (+)
1.16	0.03	490864.25	282158.44	100.00	376

Ret. Time: 1.16

<<<< POSITIVE SPECTRA >>>>

ES-API Positive

