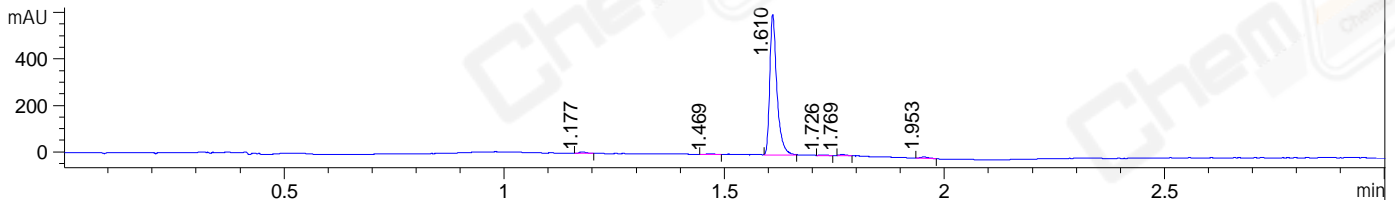
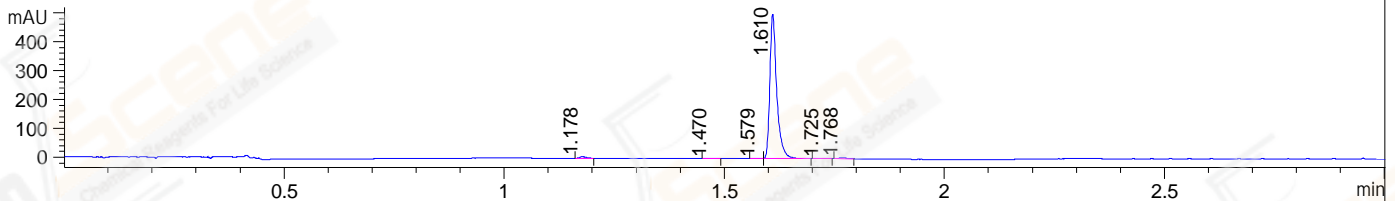


File ..\DATA\2019\20190821\703\BIZ2019-820-CXL12.D Tgt Mass (CHM):
Injection Date : 21 Aug 19 11:19 am +0800 Seq. Line : 32
Sample Name : BIZ2019-820-CXL12 Location : P1-A-07
Acq. Operator : ZJ_1432 Inj : 1
Spec. Reported : MS Integration Inj Volume : 1 ul
Acq. Method : D:\Chem32\1\data\2019\20190821\703\1-POS-3MIN.M
Analysis Method : D:\CHEM32\1\DATA\2019\20190821\703\1-POS-3MIN.M
Catalog No : CS-0028321 Batch#44627
Method Info : Mobile Phase: A: water(0.01%TFA) B:ACN(0.01%TFA)
Gradient: 5% to 95%B within 1.3 min
Flow Rate :1.8ml/min
Column :SunFire C18, 4.6*50mm,3.5um A-RP-433
Oven Temperature : 45□

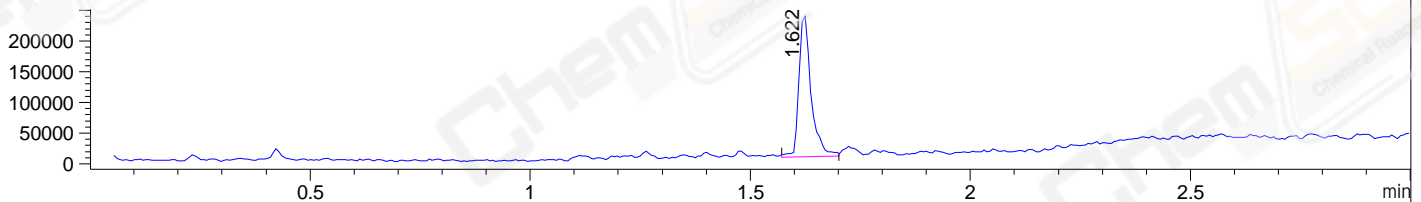
DAD1 B, Sig=214,4 Ref=off



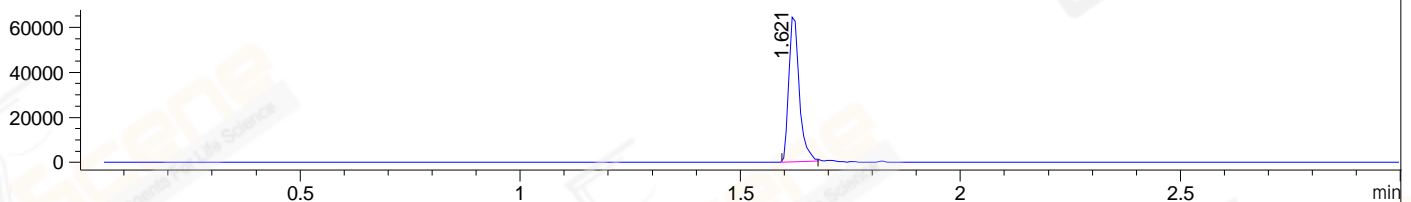
DAD1 C, Sig=254,4 Ref=off



MSD1 TIC, MS File ES-API, Pos, Scan, Frag: 70



Ion 433.15, MSD1 433.15, Target Mass 432.15 +H Positive, EIC=432.85:433.85



Integration Results for DAD1 B, Sig=214,4 Ref=off

RetTim	Width	Area	Height	Area%	MS (+)
1.18	0.02	6.44	6.32	0.91	215
1.47	0.02	3.23	2.46	0.46	159
1.61	0.02	680.83	604.37	96.28	887
1.73	0.02	3.04	3.19	0.43	250
1.77	0.02	5.04	4.84	0.71	778
1.95	0.02	8.58	6.04	1.21	159

Integration Results for DAD1 C, Sig=254,4 Ref=off

RetTim	Width	Area	Height	Area%	MS (+)
1.18	0.02	5.72	5.48	1.02	215
1.47	0.02	1.50	1.36	0.27	159
1.58	0.02	1.67	1.71	0.30	159
1.61	0.02	547.89	501.27	97.29	887
1.73	0.02	1.84	1.80	0.33	250
1.77	0.02	4.51	3.89	0.80	778

Integration Results for MSD1 TIC, MS File

RetTim	Width	Area	Height	Area%	MS (+)
1.62	0.03	440579.38	233583.14	100.00	887

Ret. Time: 1.62

<<<< POSITIVE SPECTRA >>>>

ES-API Positive

