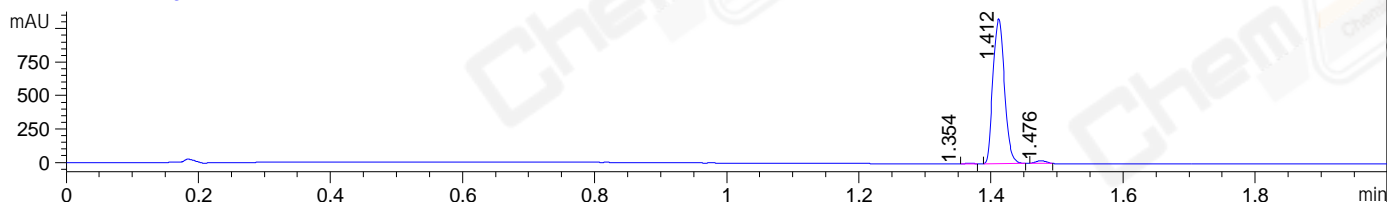
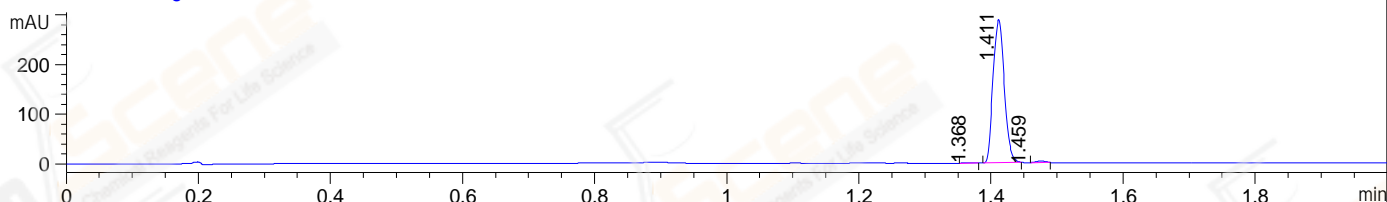


File ..ta\LY\2021-10-09\CPK2021-009-44739-030483.D Tgt Mass (EZ):
 Injection Date : 9 Oct 21 3:29 pm +0800 Seq. Line : 0
 Sample Name : CPK2021-009-44739 Location : P2-D-09
 Acq. Operator : LY_2278 Inj : 1
 Spec. Reported : MS Integration Inj Volume : 1 ul
 Acq. Method : D:\LCMS\Methods\1-POS-UPLC2.0MIN(0.8ML)-(150-1000).M
 Analysis Method : D:\LCMS\METHODS\1-POS-UPLC2.0MIN(0.8ML)-(150-1000).M
 CAS NO. : 1161002-05-6 Walkup method: '1-POS-2MIN' Target:
 Method Info : Mobile Phase: A: water(0.01%TFA) B:ACN(0.01%TFA)
 Gradient: 5% to 95%B within 0.6 min
 Flow Rate : 0.8ml/min
 Column : Poroshell 120 EC- C18, 2.1*50mm,1.9um A-RP-928
 Oven Temperature : 45C

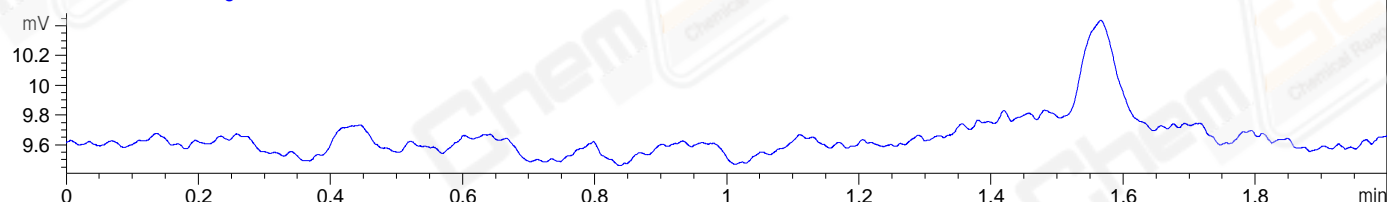
DAD1 A, Sig=214,4 Ref=off



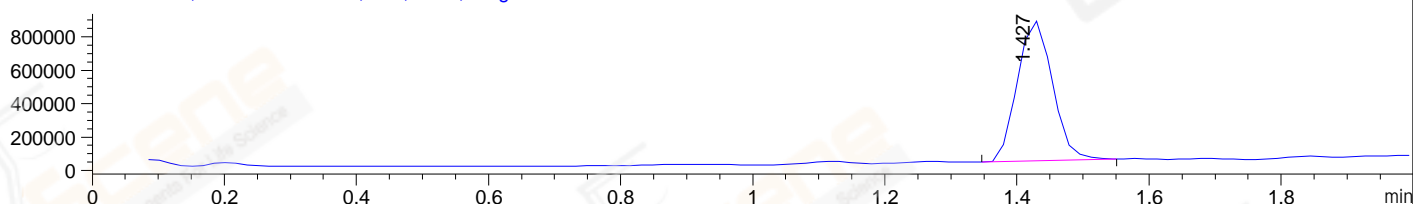
DAD1 B, Sig=254,4 Ref=off



ELS1 A, ELSD Signal



MSD1 TIC, MS File ES-API, Pos, Scan, Frag: 70



Integration Results for DAD1 A, Sig=214,4 Ref=off

RetTim	Width	Area	Height	Area%	MS (+)
1.35	0.01	2.91	0.10	0.22	370
1.41	0.02	1314.56	1087.43	98.11	370
1.48	0.02	22.36	20.01	1.67	370

Integration Results for DAD1 B, Sig=254,4 Ref=off

RetTim	Width	Area	Height	Area%	MS (+)
1.37	0.02	0.85	0.91	0.25	370
1.41	0.02	341.69	289.22	98.85	370
1.46	0.02	3.11	0.04	0.90	370

Integration Results for ELS1 A, ELSD Signal

RetTim	Width	Area	Height	Area%	MS (+)
--------	-------	------	--------	-------	--------

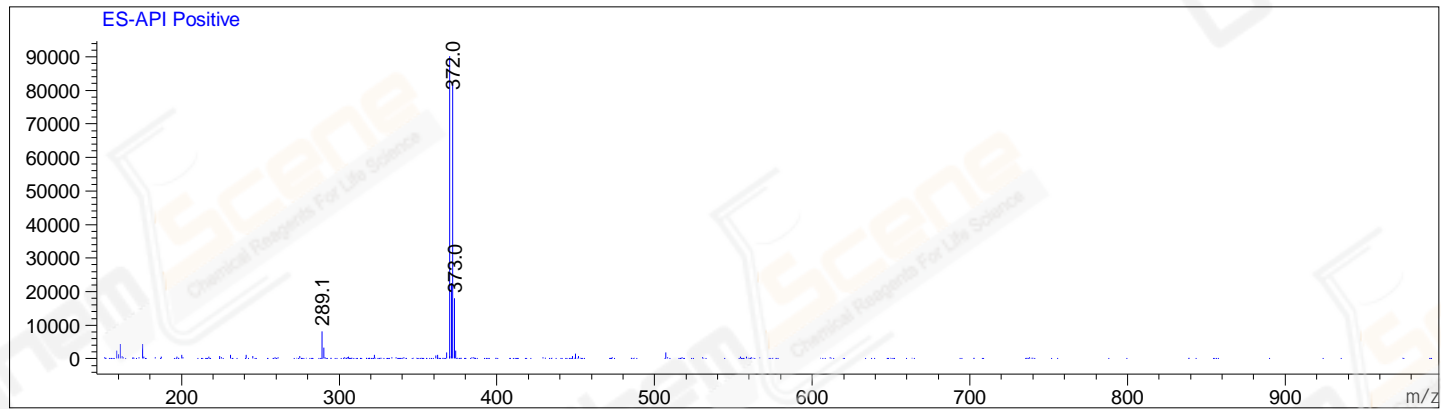
Integration Results for MSD1 TIC, MS File

1.43 0.06 3084567.50 841241.44 100.00 370

RetTim	Width	Area	Height	Area%	MS(+)
--------	-------	------	--------	-------	-------

Ret. Time: 1.43

<<<< POSITIVE SPECTRA >>>>



*** End of Report ***