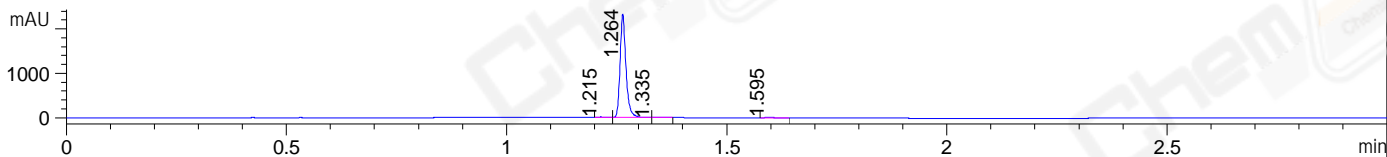
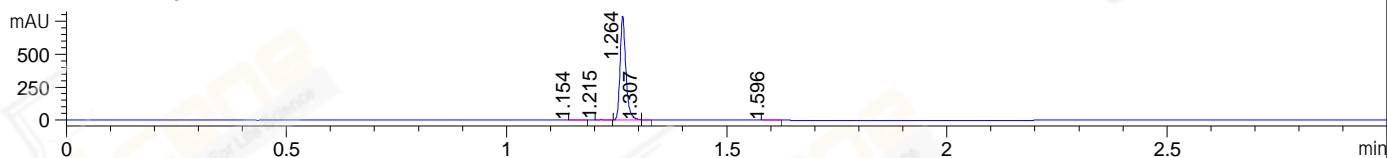


File ..03\Data\20190905\20190905 1\RQH7152-002-1.D Tgt Mass (CHM):
 Injection Date : 5 Sep 19 4:06 pm +0800 Seq. Line : 83
 Sample Name : RQH7152-002-1 Location : P2-B-06
 Acq. Operator : SYSTEM Inj : 1
 Spec. Reported : MS Integration Inj Volume : 1 ul
 Acq. Method : D:\LCMS03\Data\20190905\20190905 1\1-POS-3MIN.M
 Analysis Method : D:\LCMS03\Data\20190905\20190905 1\1-POS-3MIN.M
 Catalog No : CS-0069491 Batch#45432
 Method Info : Mobile Phase: A: water(0.01%TFA) B:ACN(0.01%TFA)
 Gradient: 5% to 95%B within 1.3 min
 Flow Rate :1.8ml/min
 Column :SunFire C18, 4.6*50mm,3.5um A-RP-446
 Oven Temperature : 45C

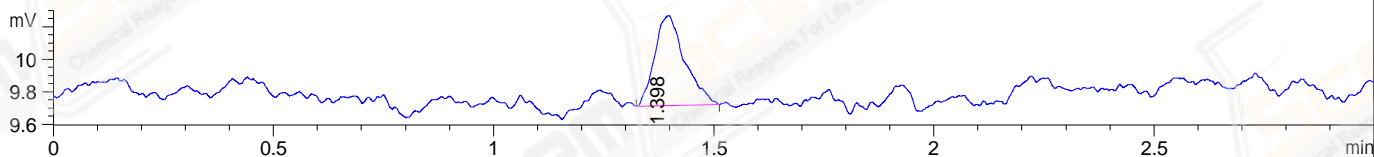
DAD1 A, Sig=214,4 Ref=off



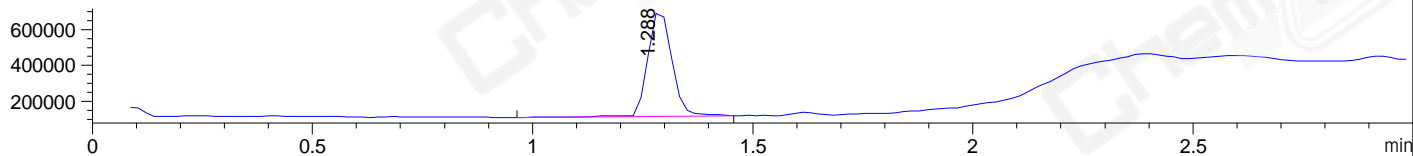
DAD1 B, Sig=254,4 Ref=off



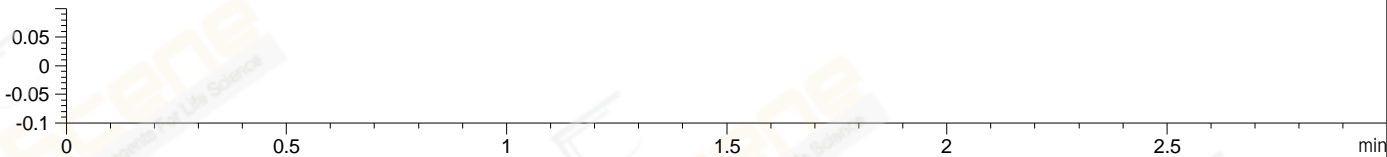
ELS1 A, ELSD Signal



MSD1 TIC, MS File ES-API, Pos, Scan, Frag: 70



Ion 1, MSD1 1, Target Mass 0 +H Positive, EIC=0.7:1.7



Integration Results for DAD1 A, Sig=214,4 Ref=off

RetTim	Width	Area	Height	Area%	MS (+)
1.21	0.01	8.83	10.38	0.40	145
1.26	0.02	2163.47	2328.03	98.91	411
1.34	0.02	1.92	1.60	0.09	145
1.60	0.02	13.12	12.33	0.60	114

Integration Results for DAD1 B, Sig=254,4 Ref=off

RetTim	Width	Area	Height	Area%	MS (+)
1.15	0.01	0.52	0.61	0.07	145
1.21	0.01	3.17	3.99	0.43	145
1.26	0.02	722.58	790.50	98.89	411
1.31	0.01	1.33	2.35	0.18	411
1.60	0.02	3.09	2.83	0.42	114

Integration Results for ELS1 A, ELSD Signal

RetTim	Width	Area	Height	Area%	MS (+)
--------	-------	------	--------	-------	--------

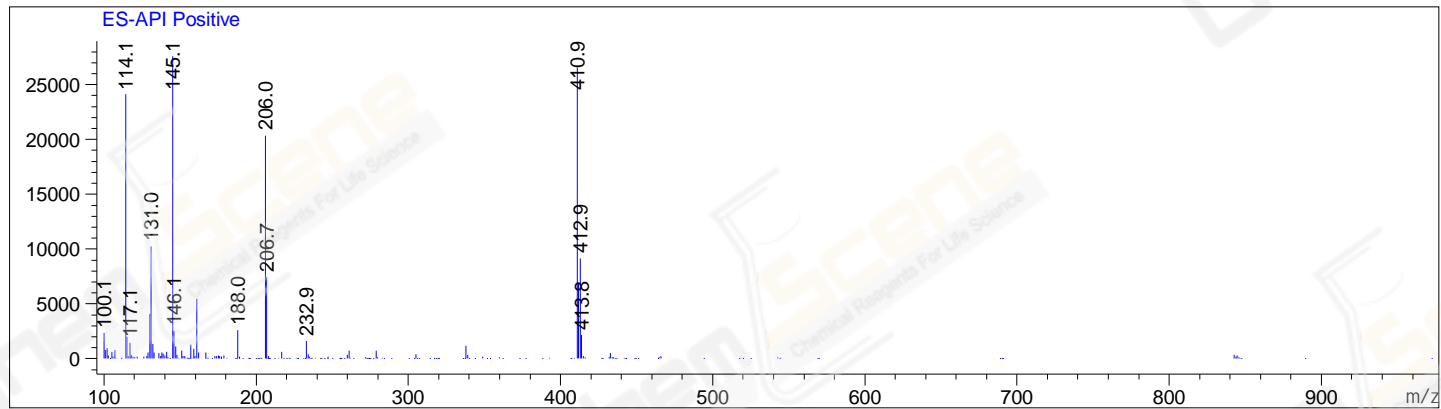
1.40 0.08 2.64 0.56 100.00 114

Integration Results for MSD1 TIC, MS File

RetTime	Width	Area	Height	Area%	MS (+)
1.29	0.06	2234256.25	593583.69	100.00	145

Ret. Time: 1.29

<<<< POSITIVE SPECTRA >>>>



*** End of Report ***