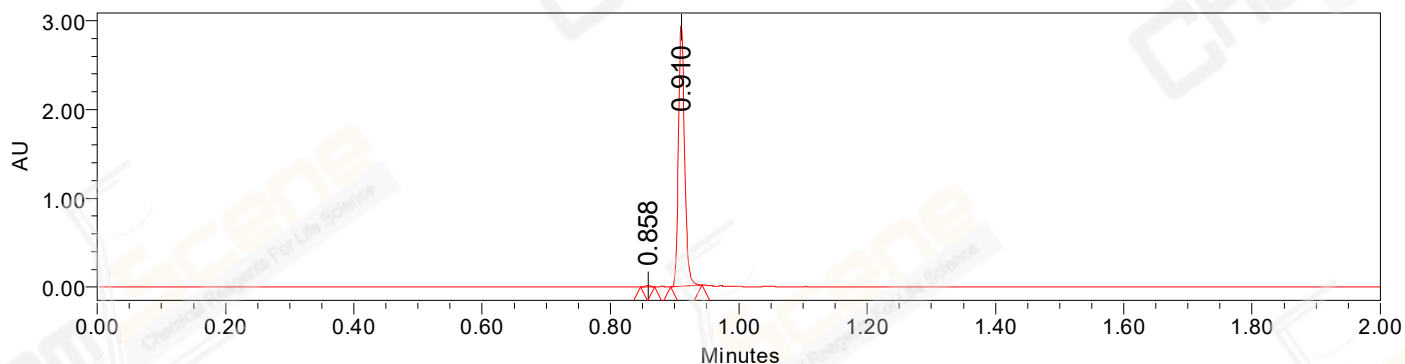


SAMPLE INFORMATION

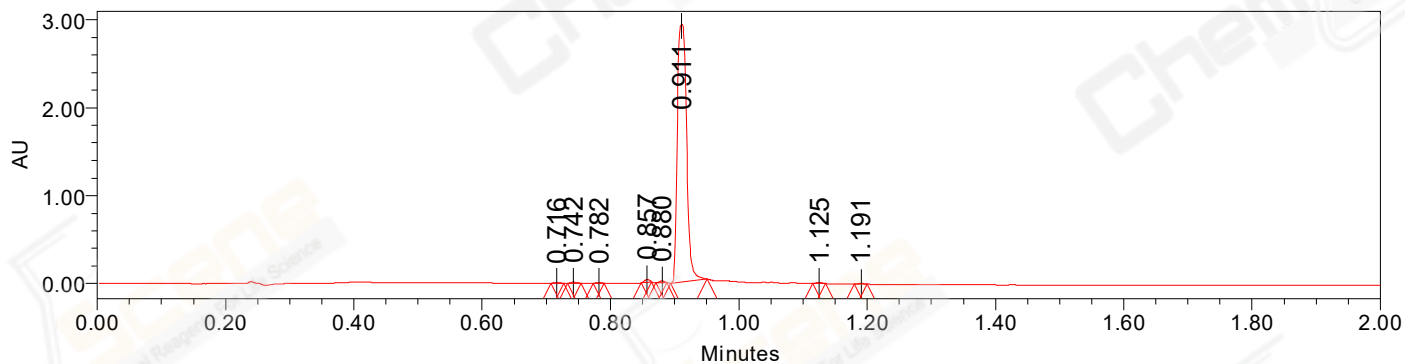
CAS NO.: 1698055-85-4
Sample information:
Vial: 2:D,6
Injection #: 1
Injection Volume: 0.50 ul
Run Time: 2.8 Minutes
Sample Set Name: 20220727

Acquired By: LY
Date Acquired: 7/27/2022 4:41:24 PM CST
Acq. Method Set: 1_POS_2MIN
Date Processed: 7/28/2022 5:31:33 PM CST,
Processing Method: PDA_01, MS_scan
Channel Name: PDA Ch1 214nm@4.8nm, MS TIC,
Column Name: A-RP-985

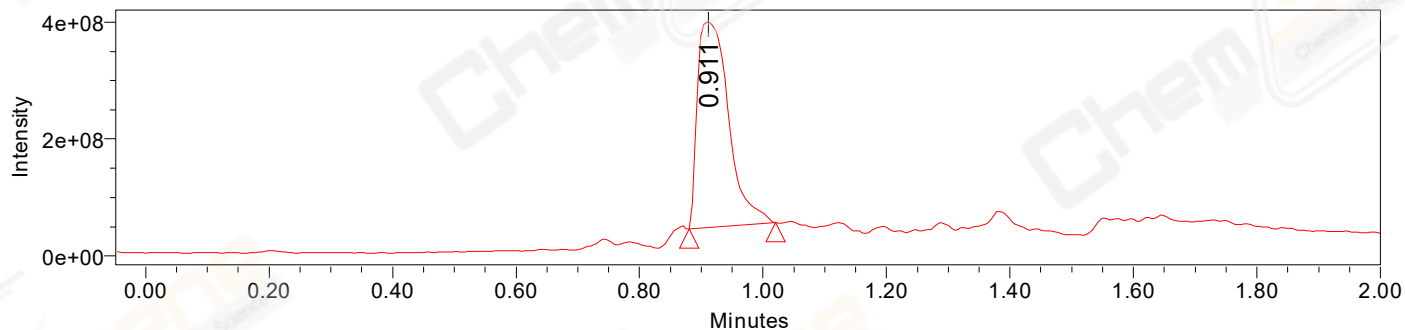
Auto-Scaled Chromatogram



Auto-Scaled Chromatogram



Auto-Scaled Chromatogram



Peak Results
Channel Name: PDA Ch2 254nm@4.8nm

	RT	Width (sec)	Area	Height	% Area	Base Peak (Combined) (m/z)	Channel Name
1	0.858	1.300	9862	14557	0.50	239.21	PDA Ch2 254nm@4.8nm
2	0.910	2.900	1977396	2941084	99.50	336.07	PDA Ch2 254nm@4.8nm

Peak Results
Channel Name: PDA Ch1 214nm@4.8nm

	RT	Width (sec)	Area	Height	% Area	Base Peak (Combined) (m/z)	Channel Name
1	0.716	1.250	4348	7171	0.15	153.19	PDA Ch1 214nm@4.8nm
2	0.742	1.250	7647	12534	0.26	152.07	PDA Ch1 214nm@4.8nm
3	0.782	1.050	3377	6095	0.11	286.35	PDA Ch1 214nm@4.8nm
4	0.857	0.950	17520	31582	0.59	151.07	PDA Ch1 214nm@4.8nm
5	0.880	1.000	9639	18167	0.32	152.02	PDA Ch1 214nm@4.8nm
6	0.911	3.450	2940439	2930404	98.19	336.07	PDA Ch1 214nm@4.8nm
7	1.125	1.200	7403	11986	0.25	432.10	PDA Ch1 214nm@4.8nm
8	1.191	1.200	4128	6988	0.14	334.37	PDA Ch1 214nm@4.8nm

Peak Results
Channel Name: MS TIC

	RT	Width (sec)	Area	Height	% Area	Base Peak (Combined) (m/z)	Channel Name
1	0.911	8.414	1233359677	353191530	100.00	431.35	MS TIC

Match Plot

