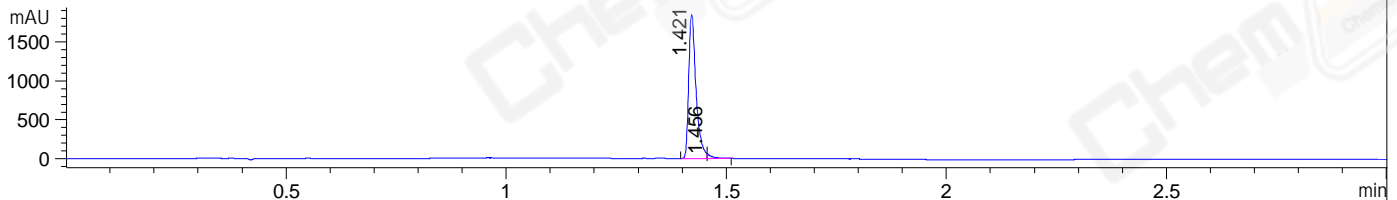
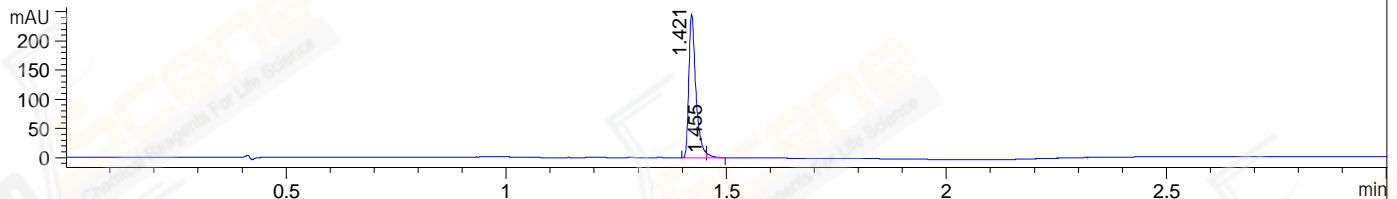


File ..\DATA\2019\20190917\719\BIZ2019-916-SCH10.D Tgt Mass (CHM):  
 Injection Date : 17 Sep 19 5:58 pm +0800 Seq. Line : 112  
 Sample Name : BIZ2019-916-SCH10 Location : P1-B-07  
 Acq. Operator : bgd\_1571 Inj : 1  
 Spec. Reported : MS Integration Inj Volume : 1 ul  
 Acq. Method : D:\Chem32\1\data\2019\20190917\719\1-POS-3MIN.M  
 Analysis Method : D:\CHEM32\1\DATA\2019\20190917\719\1-POS-3MIN.M  
 Catalog No : CS-0018160 Batch#45607  
 Method Info : Mobile Phase: A: water(0.01%TFA) B:ACN(0.01%TFA)  
 Gradient: 5% to 95%B within 1.3 min  
 Flow Rate :1.8ml/min  
 Column :SunFire C18, 4.6\*50mm,3.5um A-RP-433  
 Oven Temperature : 45□

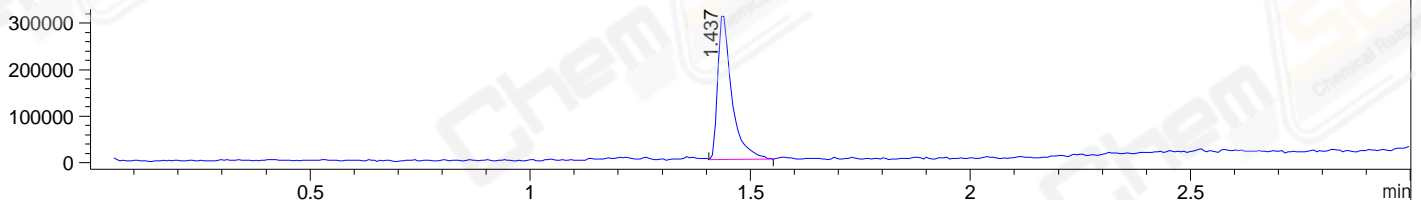
DAD1 B, Sig=214,4 Ref=off



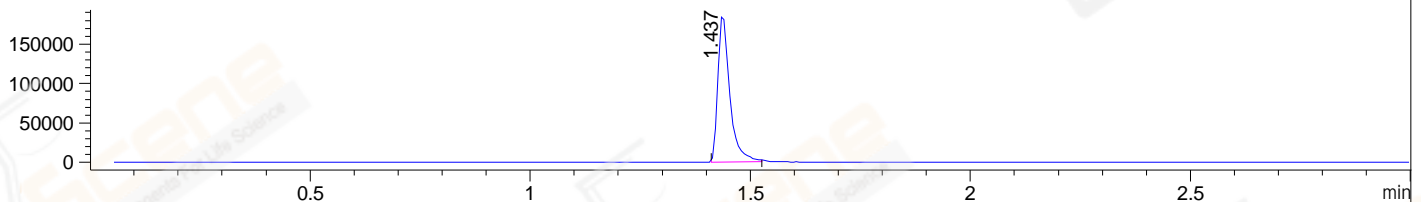
DAD1 C, Sig=254,4 Ref=off



MSD1 TIC, MS File ES-API, Pos, Scan, Frag: 70



Ion 434.2, MSD1 434.2, Target Mass 433.2 +H Positive, EIC=433.9:434.9



## Integration Results for DAD1 B, Sig=214,4 Ref=off

RetTim	Width	Area	Height	Area%	MS (+)
1.42	0.02	2118.38	1843.58	98.07	434
1.46	0.01	41.80	60.49	1.93	434

## Integration Results for DAD1 C, Sig=254,4 Ref=off

RetTim	Width	Area	Height	Area%	MS (+)
1.42	0.02	274.06	246.31	98.05	434
1.46	0.01	5.44	8.42	1.95	434

## Integration Results for MSD1 TIC, MS File

RetTim	Width	Area	Height	Area%	MS (+)
1.44	0.03	692849.38	320138.47	100.00	434

Ret. Time: 1.44

<<<< POSITIVE SPECTRA >>>>

ES-API Positive

