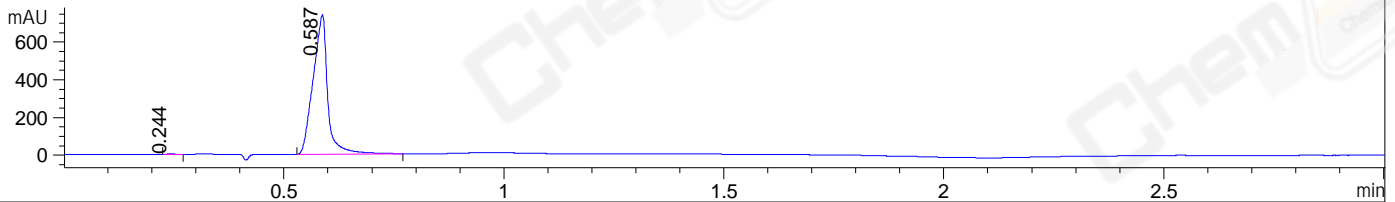
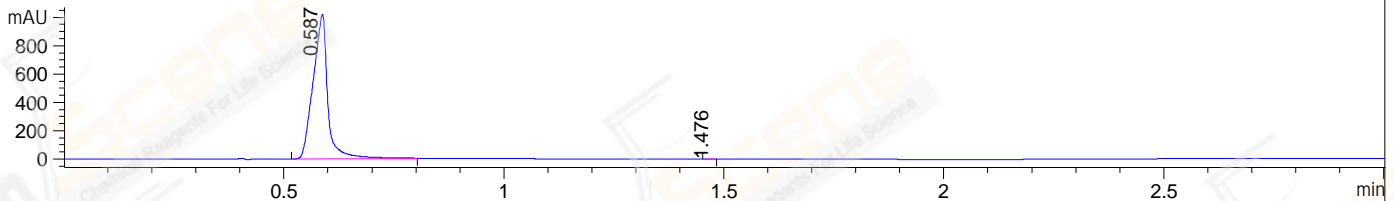


File ..ATA\2019\20190919\714\BIZ2019-909-WMX126-.D Tgt Mass (CHM):  
Injection Date : 19 Sep 19 4:01 pm +0800 Seq. Line : 81  
Sample Name : BIZ2019-909-WMX126 Location : P1-B-01  
Acq. Operator : ZJ\_1432 Inj : 1  
Spec. Reported : MS Integration Inj Volume : 5 ul  
Acq. Method : D:\Chem32\1\data\2019\20190919\714\1-POS-3MIN.M  
Analysis Method : D:\CHEM32\1\DATA\2019\20190919\714\1-POS-3MIN.M  
Catalog No : CS-0015209 Batch#46032  
Method Info : Mobile Phase: A: water(0.01%TFA) B:ACN(0.01%TFA)  
Gradient: 5% to 95%B within 1.3 min  
Flow Rate :1.8ml/min  
Column :SunFire C18, 4.6\*50mm,3.5um A-RP-433  
Oven Temperature : 45□

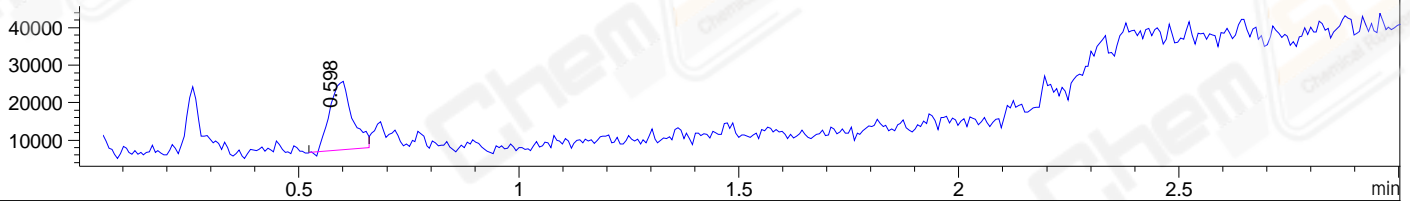
DAD1 B, Sig=214,4 Ref=off



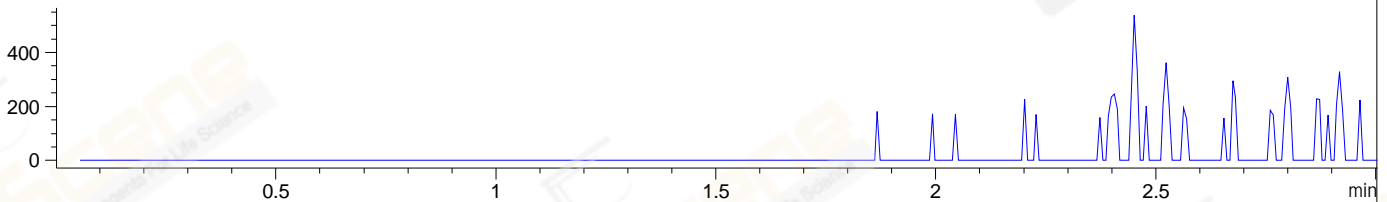
DAD1 C, Sig=254,4 Ref=off



MSD1 TIC, MS File ES-API, Pos, Scan, Frag: 70



Ion 395.03, MSD1 395.03, Target Mass 394.03 +H Positive, EIC=394.73:395.73



## Integration Results for DAD1 B, Sig=214,4 Ref=off

RetTim	Width	Area	Height	Area%	MS (+)
0.24	0.02	4.42	4.38	0.26	159
0.59	0.04	1705.48	741.92	99.74	349

## Integration Results for DAD1 C, Sig=254,4 Ref=off

RetTim	Width	Area	Height	Area%	MS (+)
0.59	0.04	2340.97	1020.06	99.99	130
1.48	0.02	0.27	0.23	0.01	130

## Integration Results for MSD1 TIC, MS File

RetTim	Width	Area	Height	Area%	MS (+)
0.60	0.05	64452.84	18447.17	100.00	349

Ret. Time: 0.60

<<<< POSITIVE SPECTRA >>>>

ES-API Positive

