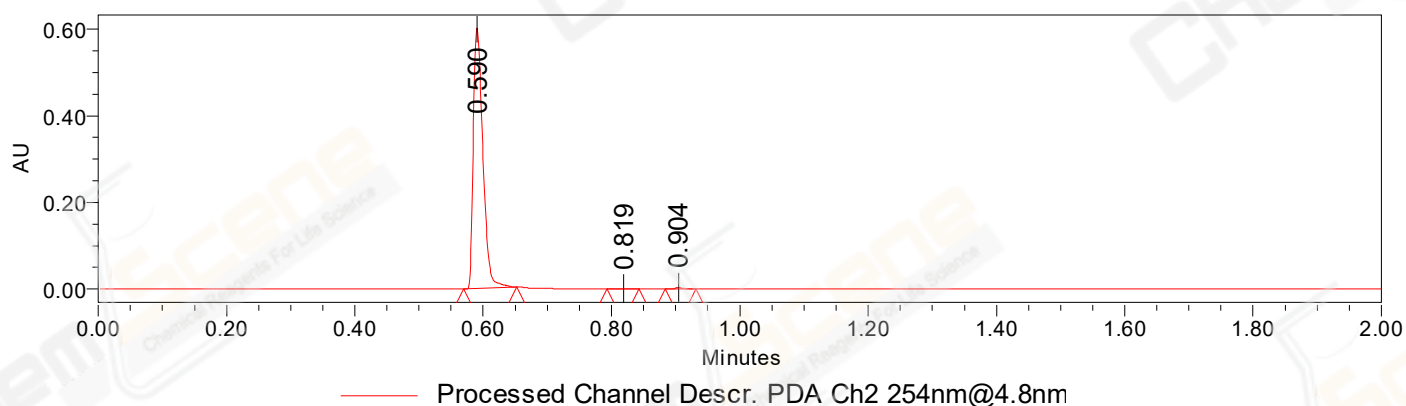


SAMPLE INFORMATION

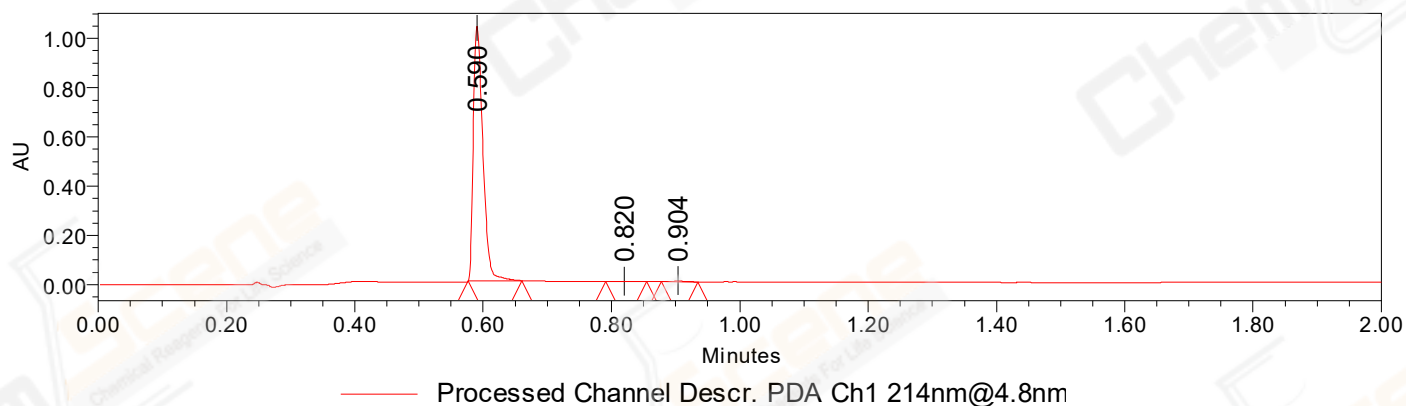
CAS NO.: 891494-63-6
Sample information:
Vial: 1:E,5
Injection #: 1
Injection Volume: 0.30 ul
Run Time: 2.8 Minutes
Sample Set Name: 20220823

Acquired By: LY
Date Acquired: 8/23/2022 7:12:51 PM CST
Acq. Method Set: 1_POS_2MIN
Date Processed: 8/24/2022 9:51:09 AM CST,
Processing Method: PDA_01, MS_scan
Channel Name: PDA Ch1 214nm@4.8nm, MS TIC,
Column Name: A-RP-985

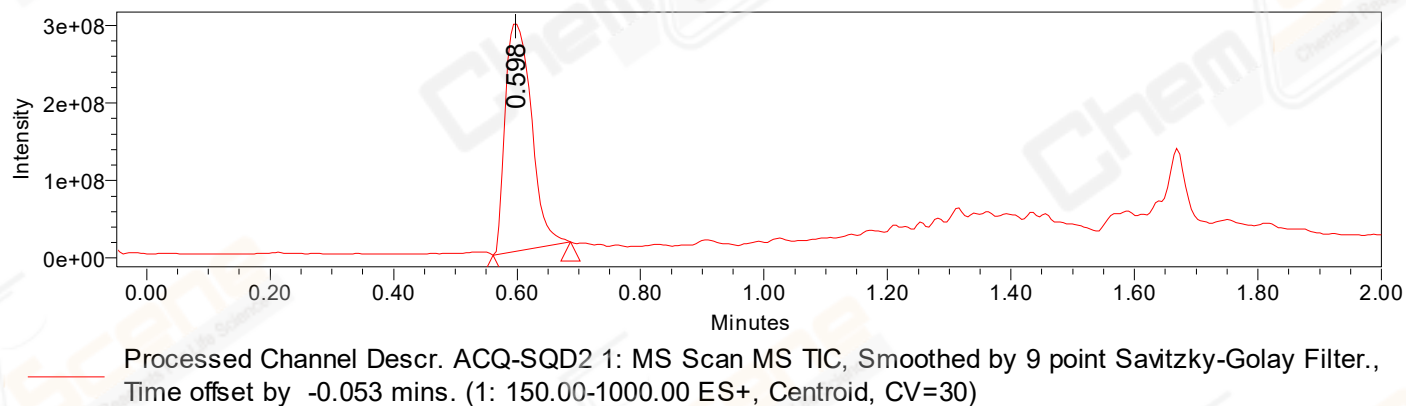
Auto-Scaled Chromatogram



Auto-Scaled Chromatogram



Auto-Scaled Chromatogram



Peak Results
Channel Name: PDA Ch2 254nm@4.8nm

	RT	Width (sec)	Area	Height	% Area	Base Peak (Combined) (m/z)	Channel Name
1	0.590	5.000	624252	602712	99.49	151.98	PDA Ch2 254nm@4.8nm
2	0.819	2.950	684	685	0.11	151.06	PDA Ch2 254nm@4.8nm
3	0.904	2.850	2517	3112	0.40	151.91	PDA Ch2 254nm@4.8nm

Peak Results
Channel Name: PDA Ch1 214nm@4.8nm

	RT	Width (sec)	Area	Height	% Area	Base Peak (Combined) (m/z)	Channel Name
1	0.590	5.000	1071404	1035644	99.57	151.93	PDA Ch1 214nm@4.8nm
2	0.820	3.850	1319	1069	0.12	151.07	PDA Ch1 214nm@4.8nm
3	0.904	3.350	3293	4304	0.31	151.96	PDA Ch1 214nm@4.8nm

Peak Results
Channel Name: MS TIC

	RT	Width (sec)	Area	Height	% Area	Base Peak (Combined) (m/z)	Channel Name
1	0.598	7.544	867213089	295922474	100.00	378.06	MS TIC

Match Plot

