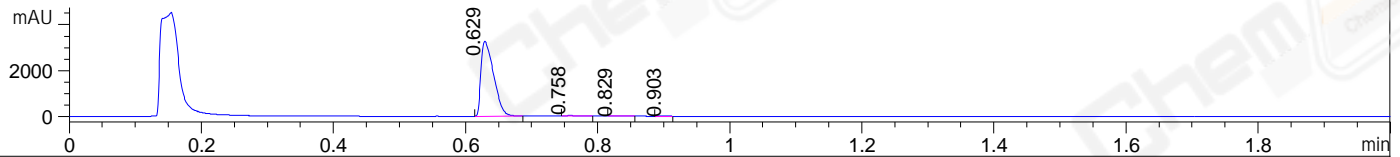
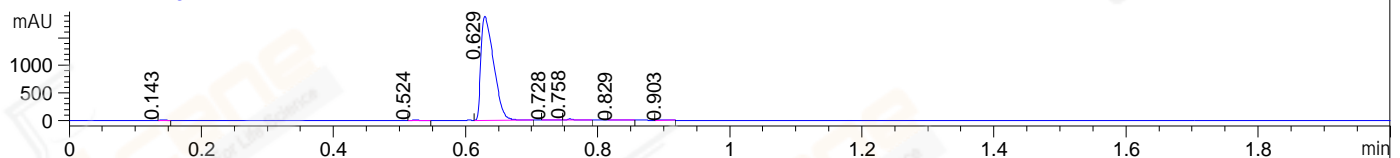


File ..0190926 2019-09-26 08-38-09\WY7090-005-P2.D Tgt Mass (CHM):
Injection Date : 26 Sep 19 11:17 am +0800 Seq. Line : 43
Sample Name : WY7090-005-P2 Location : P1-D-06
Acq. Operator : SYSTEM Inj : 1
Spec. Reported : MS Integration Inj Volume : 0.2 ul
Acq. Method : D:\LCMS03\Data\20190926\20190926 2019-09-26 08-38-09\1-POS-UPLC2.0MIN.M
Analysis Method : D:\LCMS03\Data\20190926\20190926 2019-09-26 08-38-09\1-POS-UPLC2.0MIN.M
Catalog No : CS-1117 Batch# 46091
Method Info : Mobile Phase: A: water(0.01%TFA) B:ACN(0.01%TFA)
Gradient: 5% to 95%B within 0.9 min
Flow Rate :1.0ml/min
Column :Poroshell 120 EC- C18, 2.1*50mm,1.9um A-RP-463
Oven Temperature : 45C

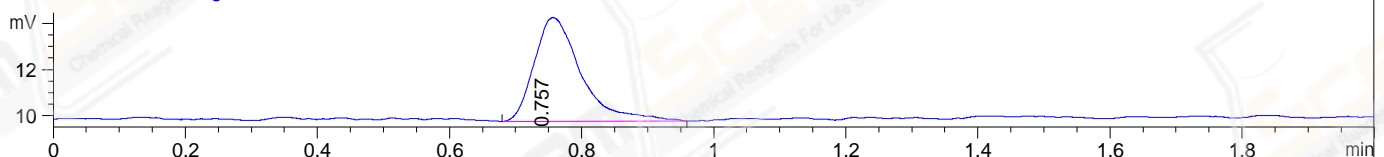
DAD1 A, Sig=214,4 Ref=off



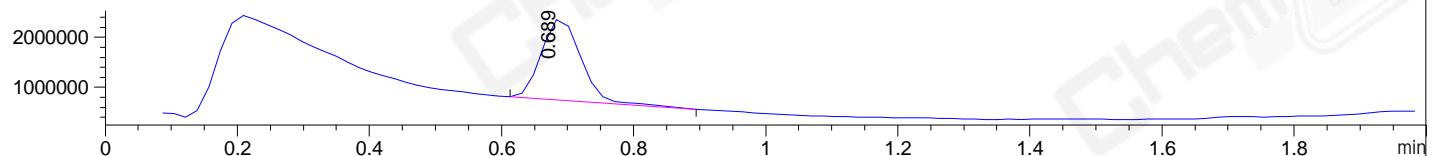
DAD1 B, Sig=254,4 Ref=off



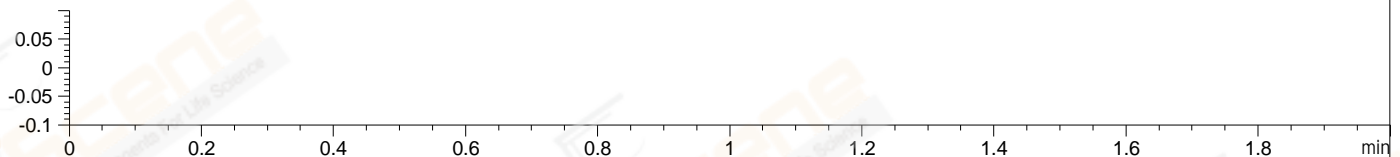
ELS1 A, ELSD Signal



MSD1 TIC, MS File ES-API, Pos, Scan, Frag: 70



Ion 1, MSD1 1, Target Mass 0 +H Positive, EIC=0.7:1.7



Integration Results for DAD1 A, Sig=214,4 Ref=off

RetTim	Width	Area	Height	Area%	MS (+)
0.63	0.02	4334.23	3267.33	99.24	157
0.76	0.01	24.45	38.81	0.56	157
0.83	0.02	4.16	3.61	0.10	157
0.90	0.02	4.67	5.05	0.11	157

Integration Results for DAD1 B, Sig=254,4 Ref=off

RetTim	Width	Area	Height	Area%	MS (+)
0.14	0.01	6.63	13.73	0.26	157
0.52	0.01	2.79	4.26	0.11	157
0.63	0.02	2514.49	1891.82	98.71	157
0.73	0.01	3.37	4.38	0.13	157
0.76	0.01	14.52	23.02	0.57	157
0.83	0.02	2.47	2.07	0.10	157
0.90	0.02	2.99	3.21	0.12	157

Integration Results for ELS1 A, ELSD Signal

0.76 0.07 22.11 4.49 100.00 157

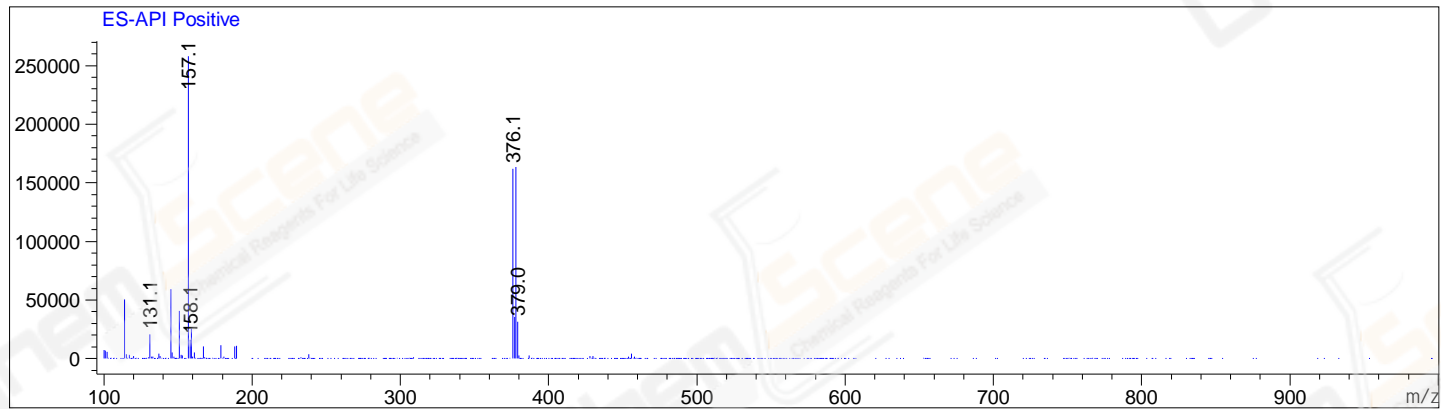
Integration Results for MSD1 TIC, MS File

RetTim	Width	Area	Height	Area%	MS (+)
0.69	0.06	6804376.00	1631337.00	100.00	157

RetTim	Width	Area	Height	Area%	MS (+)
--------	-------	------	--------	-------	--------

Ret. Time: 0.69

<<<< POSITIVE SPECTRA >>>>



*** End of Report ***