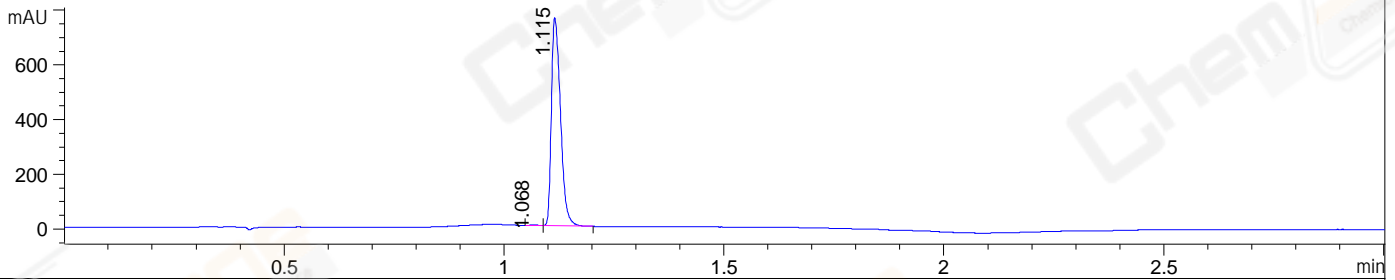
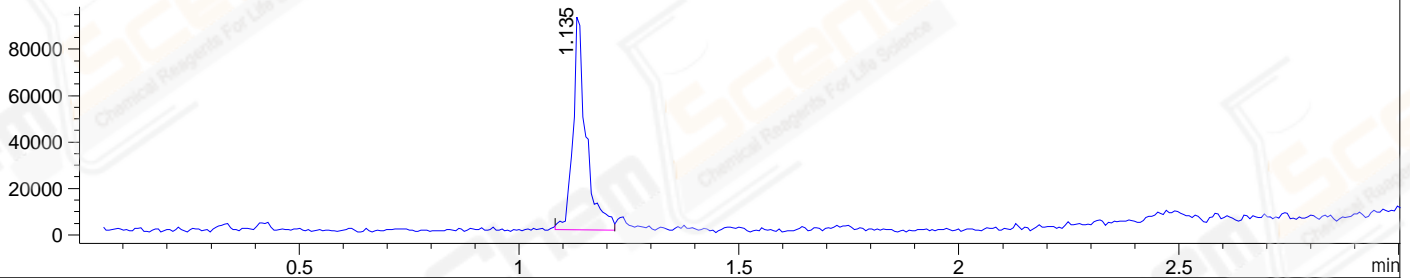


File ..\DATA\2019\20190930\722\BIZ2019-930-SCH4-.D Tgt Mass (CHM):
 Injection Date : 30 Sep 19 11:08 am +0800 Seq. Line : 28
 Sample Name : BIZ2019-930-SCH4 Location : P1-E-01
 Acq. Operator : ZJ_1432 Inj : 1
 Spec. Reported : MS Integration Inj Volume : 2 ul
 Acq. Method : D:\Chem32\1\data\2019\20190930\722\1-POS-3MIN.M
 Analysis Method : D:\CHEM32\1\DATA\2019\20190930\722\1-POS-3MIN.M
 Catalog No : CS-0102976 Batch#46358
 Method Info : Mobile Phase: A: water(0.01%TFA) B:ACN(0.01%TFA)
 Gradient: 5% to 95%B within 1.3 min
 Flow Rate :1.8ml/min
 Column :SunFire C18, 4.6*50mm,3.5um A-RP-433
 Oven Temperature : 45□

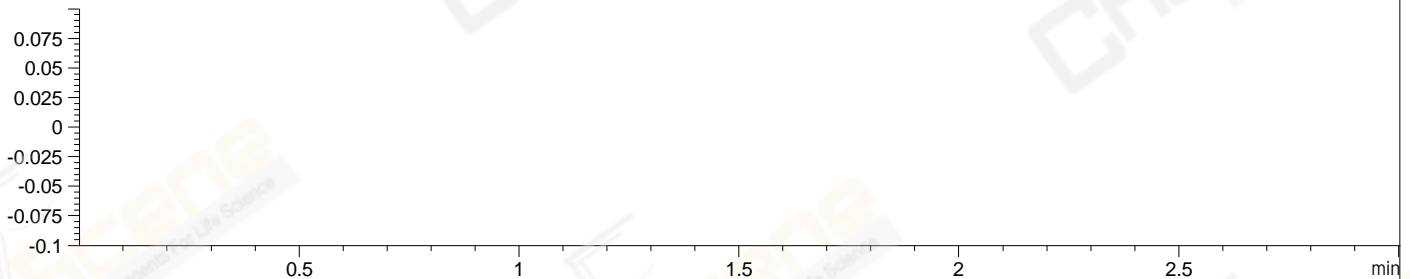
DAD1 B, Sig=214,4 Ref=off



MSD1 TIC, MS File ES-API, Pos, Scan, Frag: 70



Ion 1508.68, MSD1 1508.68, Target Mass 1507.68 +H Positive, EIC=1508.38:1509.38



Integration Results for DAD1 B, Sig=214,4 Ref=off

RetTim	Width	Area	Height	Area%	MS (+)
1.07	0.03	3.47	2.13	0.32	ND
1.12	0.02	1095.26	760.43	99.68	697

Integration Results for MSD1 TIC, MS File

RetTim	Width	Area	Height	Area%	MS (+)
1.13	0.03	193764.47	95714.57	100.00	697

Ret. Time: 1.13

<<<< POSITIVE SPECTRA >>>>

ES-API Positive

