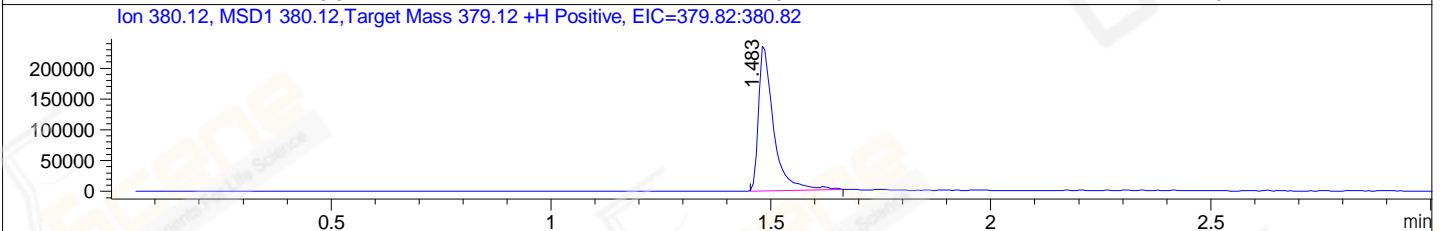
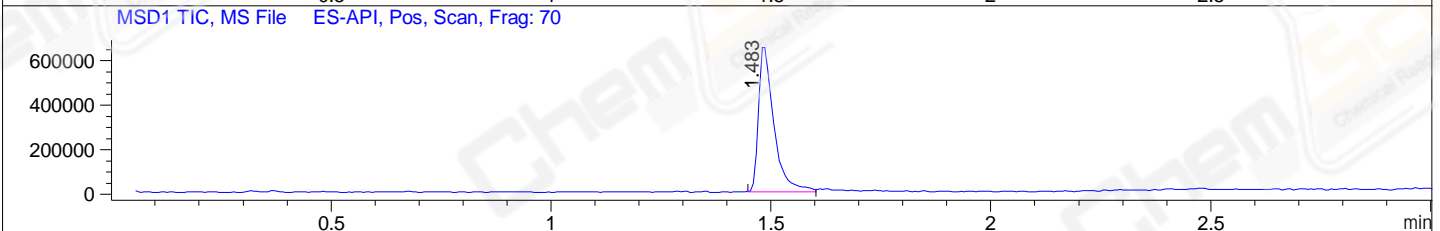
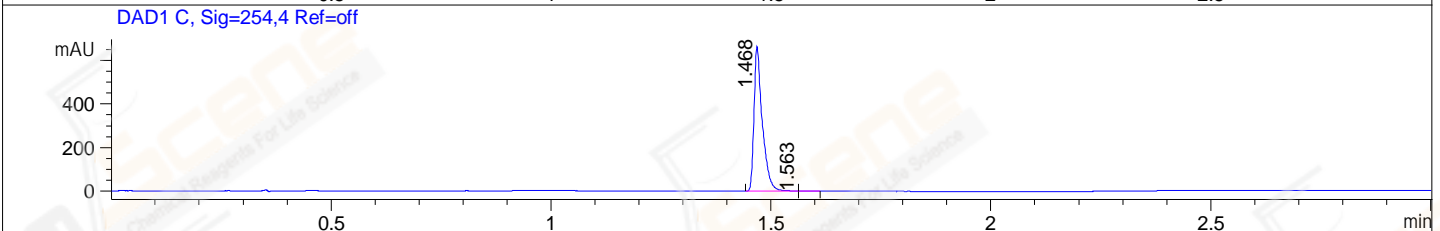
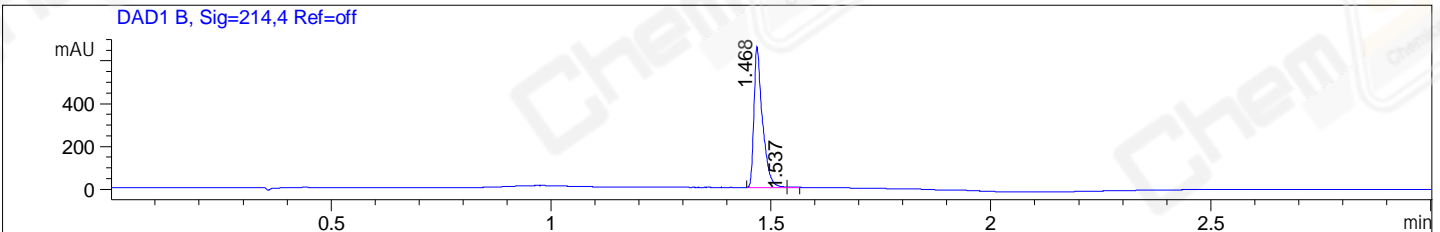


File ..1\DATA\2019\20190929\720\BIZ2019-929-SCH2.D Tgt Mass (CHM):  
Injection Date : 29 Sep 19 1:49 pm +0800 Seq. Line : 61  
Sample Name : BIZ2019-929-SCH2 Location : P1-A-09  
Acq. Operator : bgd\_1571 Inj : 1  
Spec. Reported : MS Integration Inj Volume : 1 ul  
Acq. Method : D:\Chem32\1\data\2019\20190929\720\1-POS-3MIN.M  
Analysis Method : D:\CHEM32\1\DATA\2019\20190929\720\1-POS-3MIN.M  
Catalog No : CS-0100225 Batch#46440  
Method Info : Mobile Phase: A: water(0.01%TFA) B:ACN(0.01%TFA)  
Gradient: 5% to 95%B within 1.3 min  
Flow Rate :1.8ml/min  
Column :SunFire C18, 4.6\*50mm,3.5um A-RP-433  
Oven Temperature : 45□



Integration Results for DAD1 B, Sig=214,4 Ref=off

RetTim	Width	Area	Height	Area%	MS (+)
1.47	0.02	881.18	658.96	99.76	380
1.54	0.02	2.14	2.24	0.24	380

Integration Results for DAD1 C, Sig=254,4 Ref=off

RetTim	Width	Area	Height	Area%	MS (+)
1.47	0.02	873.48	665.55	99.82	380
1.56	0.03	1.54	0.86	0.18	380

Integration Results for MSD1 TIC, MS File

RetTim	Width	Area	Height	Area%	MS (+)
1.48	0.04	1583661.75	674695.06	100.00	380

Ret. Time: 1.48

<<<< POSITIVE SPECTRA >>>>

ES-API Positive

