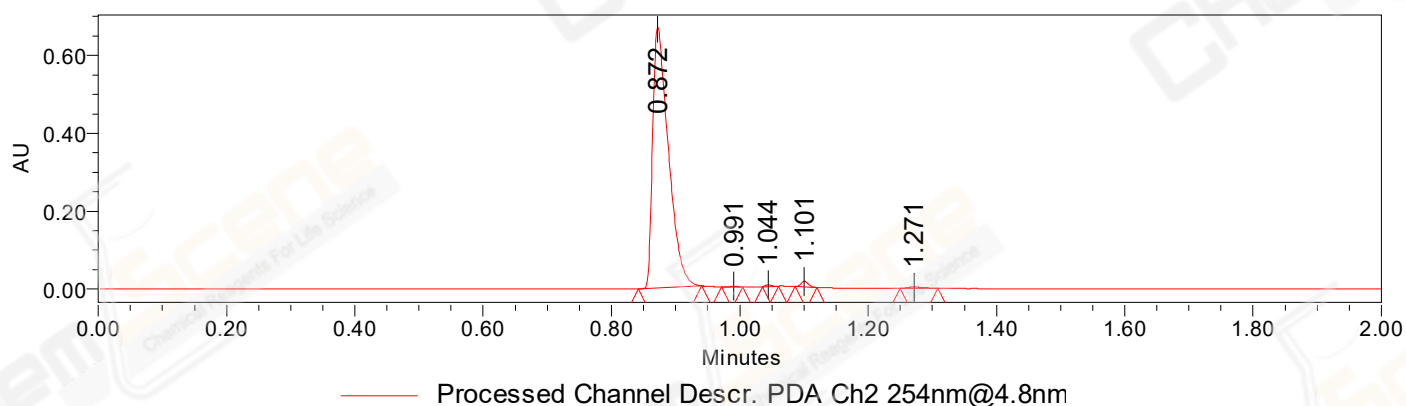


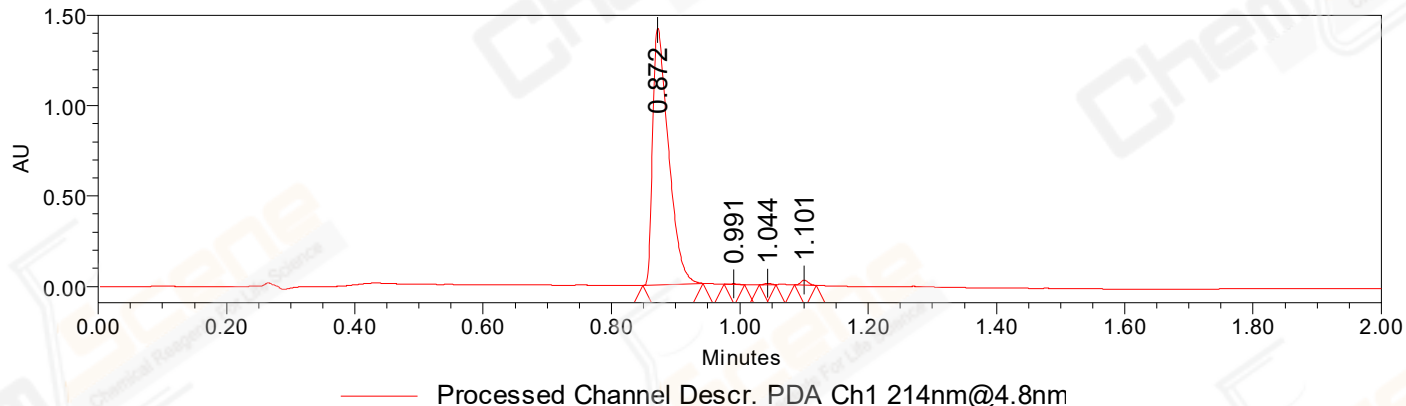
## SAMPLE INFORMATION

Product Name:	THZ1 (Hydrochloride)	Acquired By:	LY
Sample information:		Date Acquired:	6/20/2022 3:01:05 PM CST
Vial:	1:E,4	Acq. Method Set:	1_POS_2MIN
Injection #:	1	Date Processed:	6/20/2022 4:15:03 PM CST,
Injection Volume:	0.50 ul	Processing Method:	PDA_01, MS_scan
Run Time:	2.8 Minutes	Channel Name:	PDA Ch1 214nm@4.8nm, MS TIC,
Sample Set Name:	20220620	Column Name:	A-RP-985

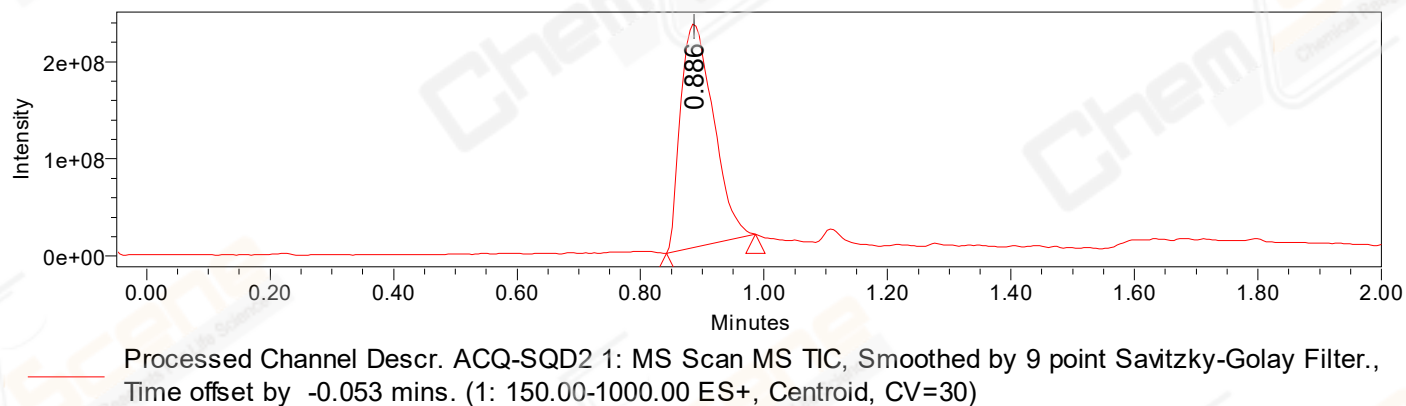
### Auto-Scaled Chromatogram



### Auto-Scaled Chromatogram



### Auto-Scaled Chromatogram



Peak Results  
Channel Name: PDA Ch2 254nm@4.8nm

	RT	Width (sec)	Area	Height	% Area	Base Peak (Combined) (m/z)	Channel Name
1	0.872	5.950	1139145	668708	98.25	152.03	PDA Ch2 254nm@4.8nm
2	0.991	1.950	1771	1981	0.15	291.72	PDA Ch2 254nm@4.8nm
3	1.044	1.550	2843	4279	0.25	284.80	PDA Ch2 254nm@4.8nm
4	1.101	2.050	11155	14403	0.96	152.13	PDA Ch2 254nm@4.8nm
5	1.271	3.500	4474	2639	0.39	152.11	PDA Ch2 254nm@4.8nm

Peak Results  
Channel Name: PDA Ch1 214nm@4.8nm

	RT	Width (sec)	Area	Height	% Area	Base Peak (Combined) (m/z)	Channel Name
1	0.872	5.600	2435340	1421203	98.78	152.05	PDA Ch1 214nm@4.8nm
2	0.991	1.900	3398	3944	0.14	284.71	PDA Ch1 214nm@4.8nm
3	1.044	1.600	5217	7719	0.21	284.72	PDA Ch1 214nm@4.8nm
4	1.101	2.050	21503	27662	0.87	284.86	PDA Ch1 214nm@4.8nm

Peak Results  
Channel Name: MS TIC

	RT	Width (sec)	Area	Height	% Area	Base Peak (Combined) (m/z)	Channel Name
1	0.886	8.704	851396175	229977498	100.00	284.06	MS TIC

Match Plot

