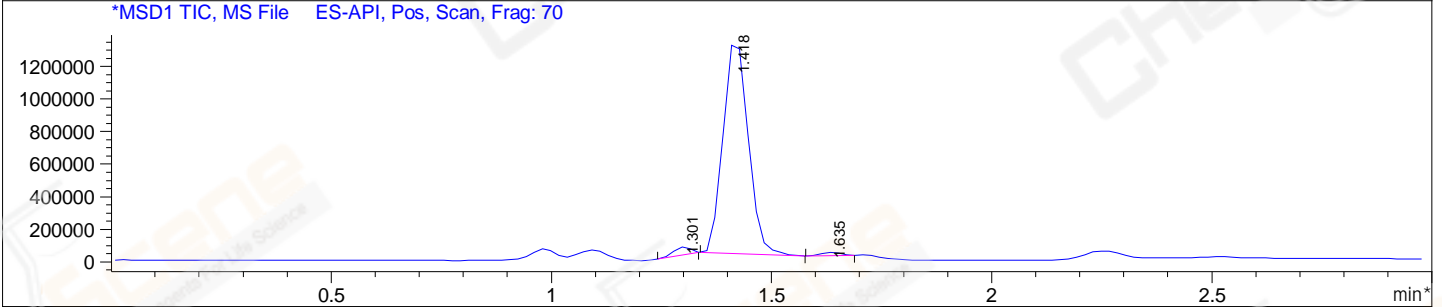
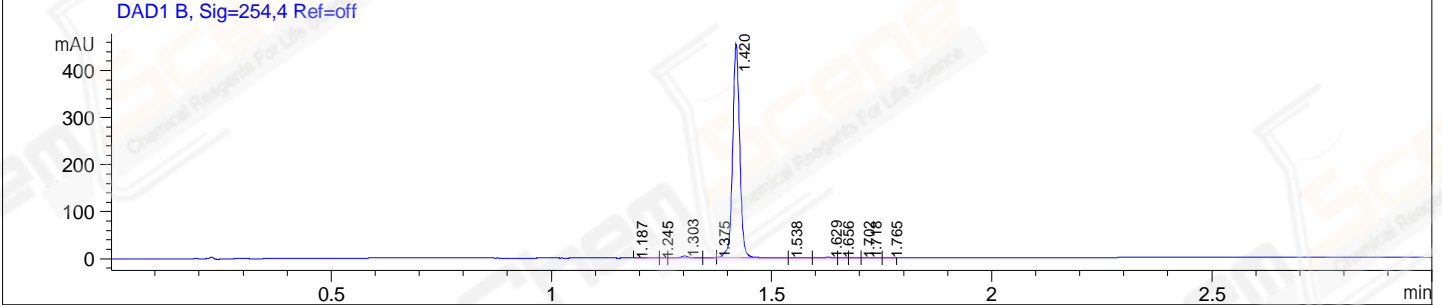
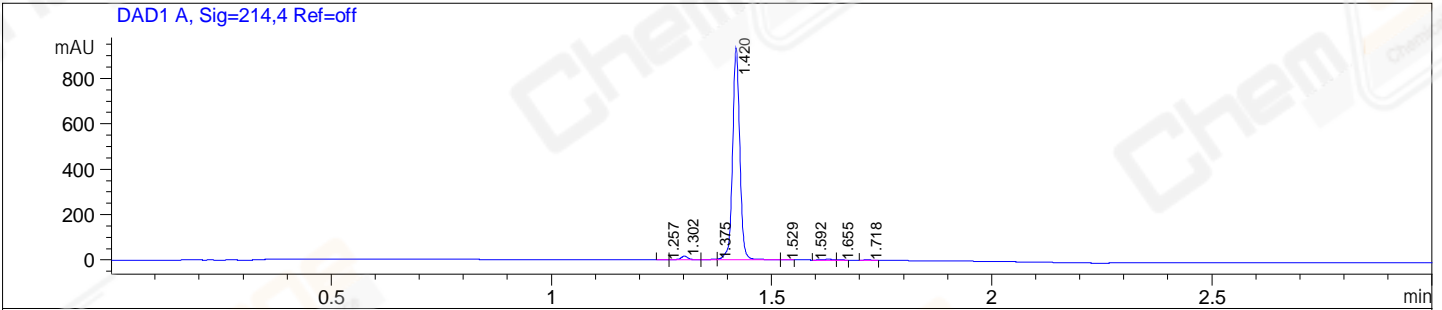


File E:\ChemStation\1\DATA\2024\2024-06\2024-06-25\BIZ2024-624-SCH62-UPLC-MS-10-037192.D  
 Injection Date : 25-Jun-24, 19:01:18 Tgt Mass(EZX) :  
 Sample Name : BIZ2024-624-SCH62 Location : P2-E-05  
 Acq. Operator : LY\_2278 Inj : 1  
 Spec. Reported : MS Integration Inj Volume : 0.8 ul  
 Acq. Method : E:\ChemStation\1\Methods\1-POS-UPLC3.0MIN(1.2)(150-2000).M  
 Analysis Method : E:\CHEMSTATION\1\METHODS\1-POS-UPLC3.0MIN(1.2)(150-2000).M  
 CAS NO. : 2170484-59-8 WalkUp method: '1-POS-3MIN-(150-2000)' Project: BIZ2024  
 Method Info : Mobile Phase: A: water(0.01%TFA) B:ACN(0.01%TFA)  
 Gradient: 5% to 95%B within 2.0 min  
 Flow Rate :1.2ml/min  
 Column :Shim-pack Scepter C18-120, 3.0\*33mm,3um  
 Oven Temperature : 45C



Integration Results for DAD1 A, Sig=214,4 Ref=off

RetTim	Width	Area	Height	Area%
1.26	0.02	0.69	0.62	0.06
1.30	0.02	18.89	16.24	1.72
1.38	0.02	3.20	2.99	0.29
1.42	0.02	1068.46	935.55	97.11
1.53	0.02	1.19	0.93	0.11
1.59	0.02	4.90	-0.00	0.45
1.65	0.02	0.99	1.00	0.09
1.72	0.02	1.98	1.82	0.18

Integration Results for DAD1 B, Sig=254,4 Ref=off

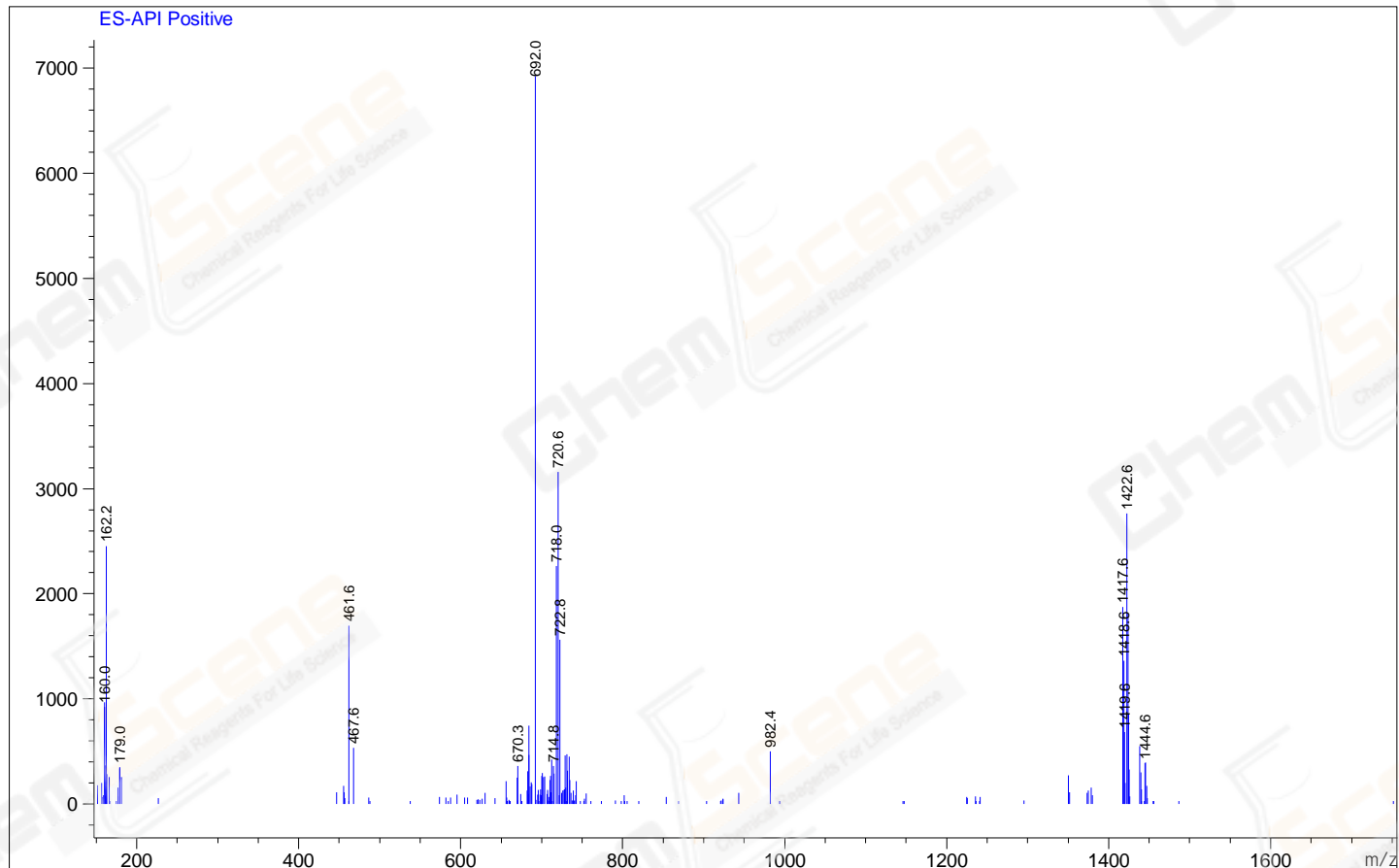
RetTim	Width	Area	Height	Area%
1.19	0.03	0.93	0.02	0.18
1.24	0.02	0.15	0.10	0.03
1.30	0.02	5.25	4.32	1.00
1.37	0.02	1.28	1.33	0.24
1.42	0.02	511.88	455.65	97.30
1.54	0.03	1.30	0.34	0.25

1.63	0.03	2.38	1.48	0.45
1.66	0.02	0.72	0.64	0.14
1.70	0.03	0.56	0.35	0.11
1.72	0.02	1.37	1.06	0.26
1.77	0.02	0.26	0.25	0.05

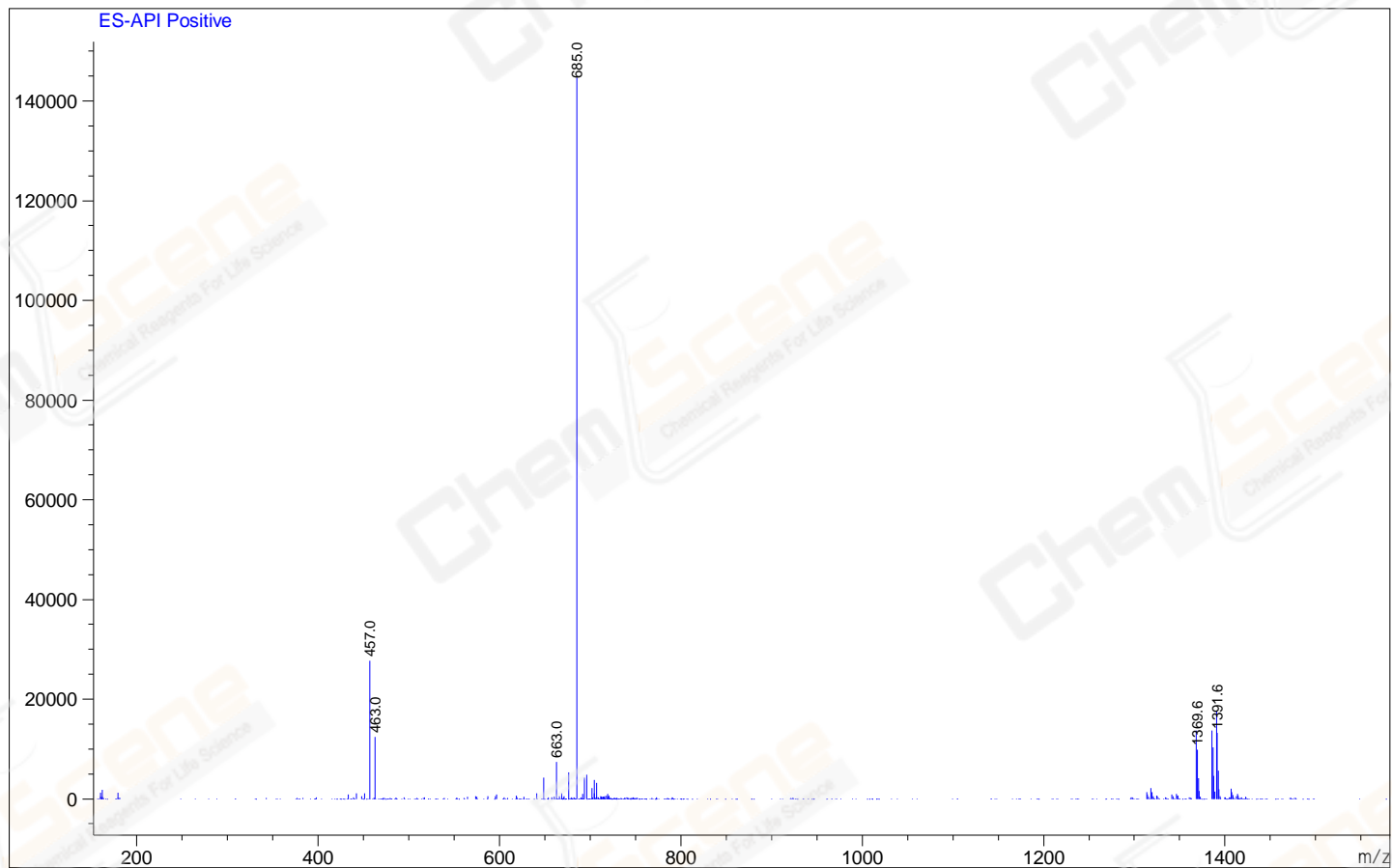
## Integration Results for MSD1 TIC, MS File

RetTim	Width	Area	Height	Area%
1.30	0.05	141545.00	51248.26	2.63
1.42	0.06	5177374.50	1337461.25	96.14
1.63	0.05	66066.57	22156.50	1.23

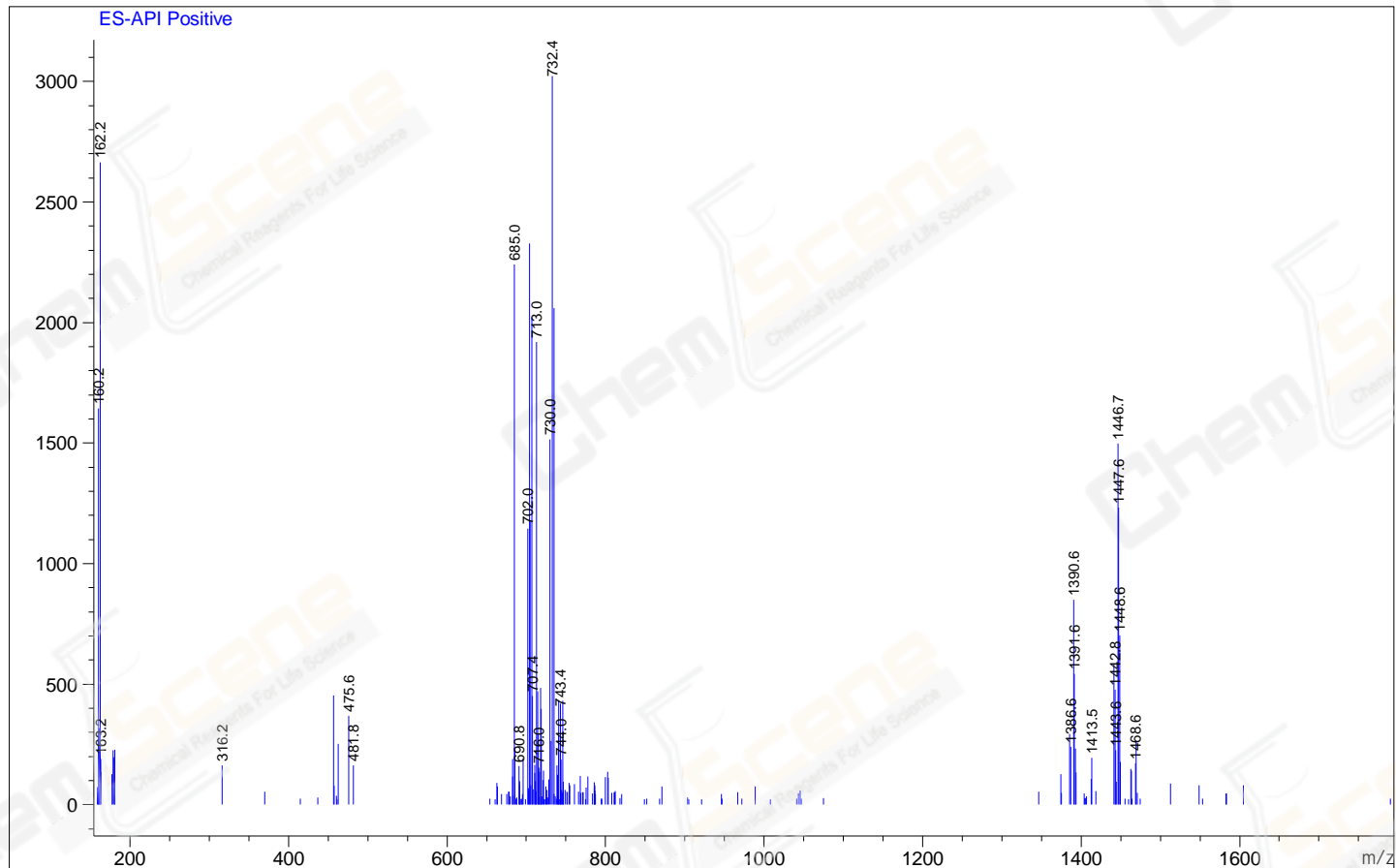
Ret. Time: 1.30 <<<< POSITIVE SPECTRA >>>>



Ret. Time: 1.42



Ret. Time: 1.63



\*\*\* End of Report \*\*\*