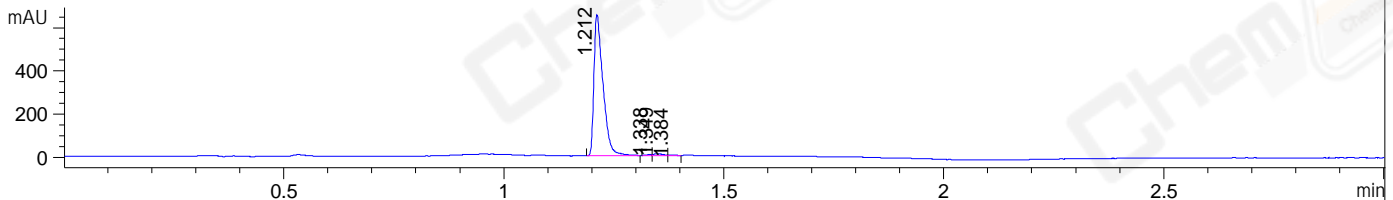
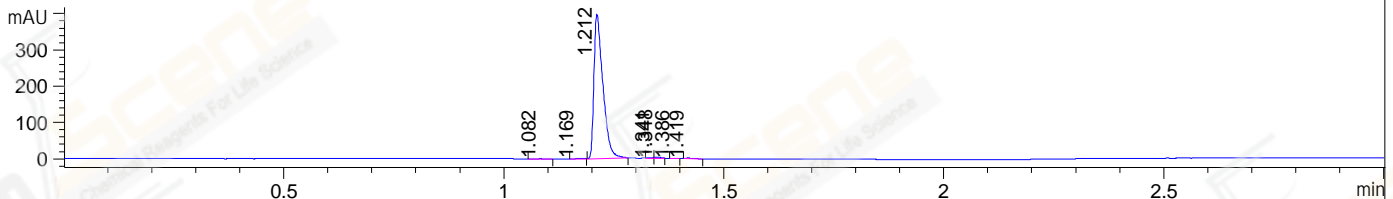


File ..\DATA\2019\20191014\728\BIZ2019-012-SCH12.D Tgt Mass (CHM):  
Injection Date : 14 Oct 19 9:56 am +0800 Seq. Line : 13  
Sample Name : BIZ2019-012-SCH12 Location : P1-C-09  
Acq. Operator : ZJ\_1432 Inj : 1  
Spec. Reported : MS Integration Inj Volume : 0.8 ul  
Acq. Method : D:\Chem32\1\data\2019\20191014\728\1-POS-3MIN.M  
Analysis Method : D:\CHEM32\1\DATA\2019\20191014\728\1-POS-3MIN.M  
Catalog No : CS-0032240 Batch#46884  
Method Info : Mobile Phase: A: water(0.01%TFA) B:ACN(0.01%TFA)  
Gradient: 5% to 95%B within 1.3 min  
Flow Rate :1.8ml/min  
Column :SunFire C18, 4.6\*50mm,3.5um A-RP-433  
Oven Temperature : 45□

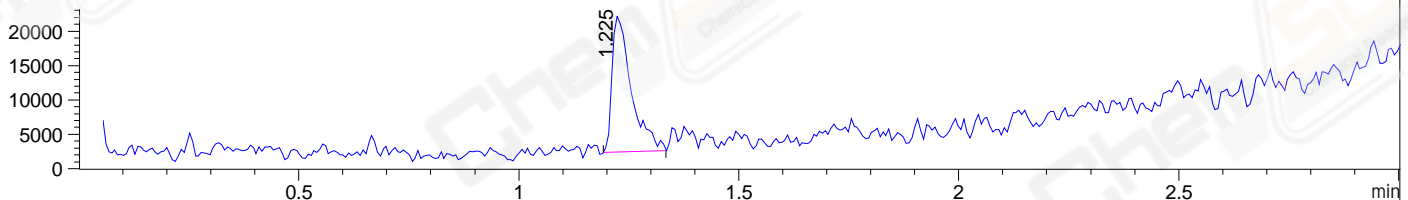
DAD1 B, Sig=214,4 Ref=off



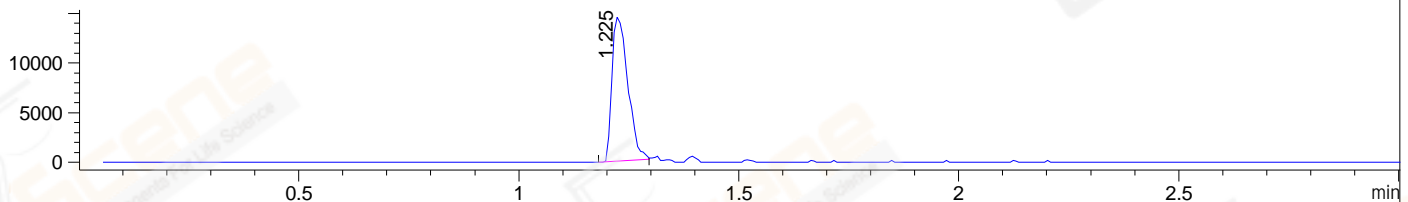
DAD1 C, Sig=254,4 Ref=off



MSD1 TIC, MS File ES-API, Pos, Scan, Frag: 70



Ion 481, MSD1 481, Target Mass 480 +H Positive, EIC=480.7:481.7



Integration Results for DAD1 B, Sig=214,4 Ref=off

RetTim	Width	Area	Height	Area%	MS (+)
1.21	0.02	929.82	653.90	98.08	481
1.34	0.01	4.30	5.29	0.45	ND
1.35	0.02	11.56	8.58	1.22	ND
1.38	0.02	2.38	2.30	0.25	ND

Integration Results for DAD1 C, Sig=254,4 Ref=off

RetTim	Width	Area	Height	Area%	MS (+)
1.08	0.03	1.49	0.76	0.26	ND
1.17	0.02	1.56	1.08	0.27	ND
1.21	0.02	557.68	397.41	98.25	481
1.34	0.01	1.54	1.84	0.27	ND
1.35	0.02	2.52	2.71	0.44	ND
1.39	0.01	0.99	1.13	0.17	ND
1.42	0.02	1.85	1.65	0.33	ND

Integration Results for MSD1 TIC, MS File

1.23      0.05      60145.92      19820.19      100.00      481

RetTime	Width	Area	Height	Area%	MS (+)
---------	-------	------	--------	-------	--------

Ret. Time: 1.23

<<<< POSITIVE SPECTRA >>>>

ES-API Positive

