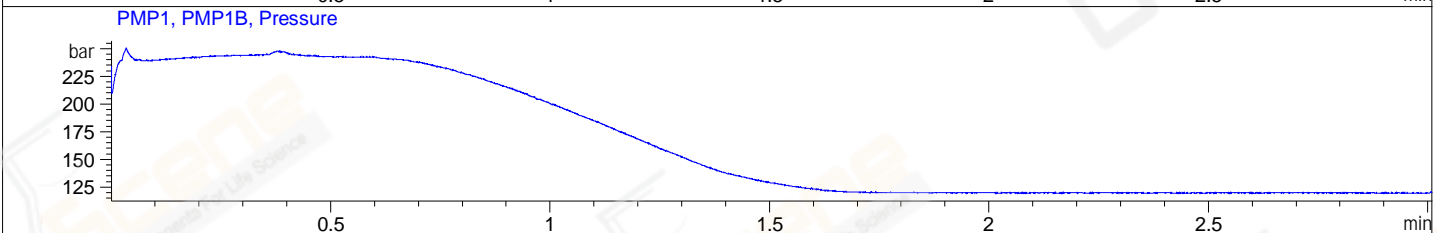
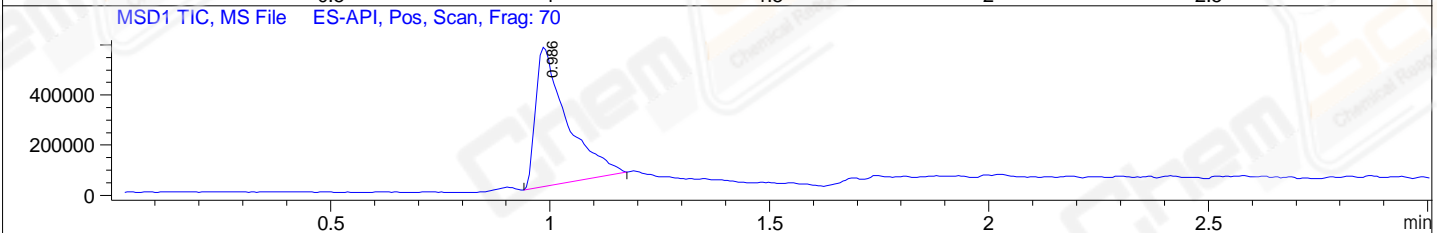
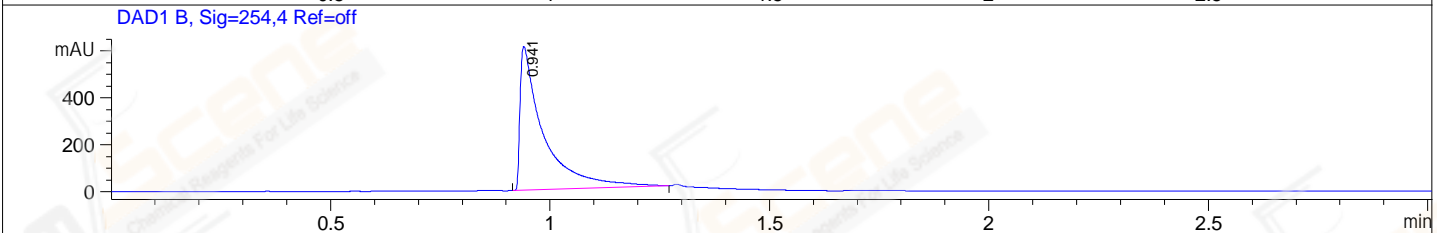
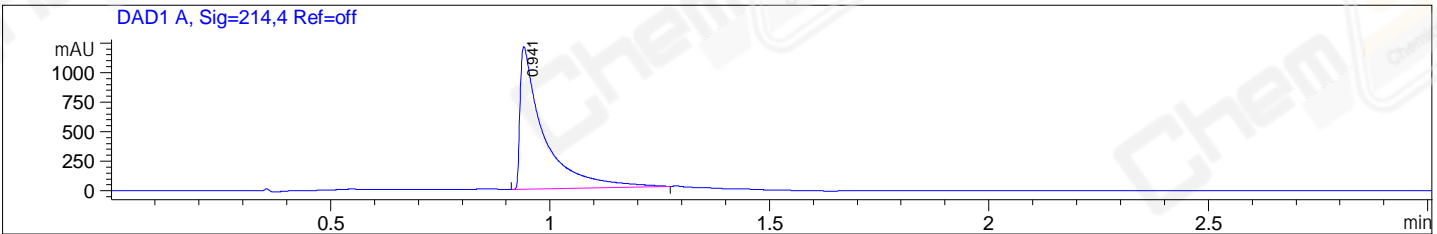


File E:\DATA\24-06\2024-06-25\HY-10518-P1-UPLC-MS-07-044983.D
 Injection Date : 25-Jun-24, 12:30:32 Tgt Mass(EZX) :
 Sample Name : HY-10518-P1 Location : P2-B-01
 Acq. Operator : admin Inj : 1
 Spec. Reported : MS Integration Inj Volume : 1.5 ul
 Acq. Method : E:\chem\Methods\0.6MINBQ(100-2000) C2.M
 Analysis Method : E:\chem\Methods\1-POS-5MIN C2.M
 CAS NO. : 445430-58-0 WalkUp method: '0.6MINBQ' Project: P-004 Leader: LG
 Method Info : Mobile Phase: A: water(0.01%TFA) B:ACN(0.01%TFA)
 Gradient: 5% to95%B within 3.0 min
 Flow Rate :1.8ml/min
 Column :Shim-pack Scepter C18,3um,4.6x50mm,A-RP-1104
 Oven Temperature : 45C



Integration Results for DAD1 A, Sig=214,4 Ref=off

RetTim	Width	Area	Height	Area%
0.94	0.05	4476.93	1205.81	100.00

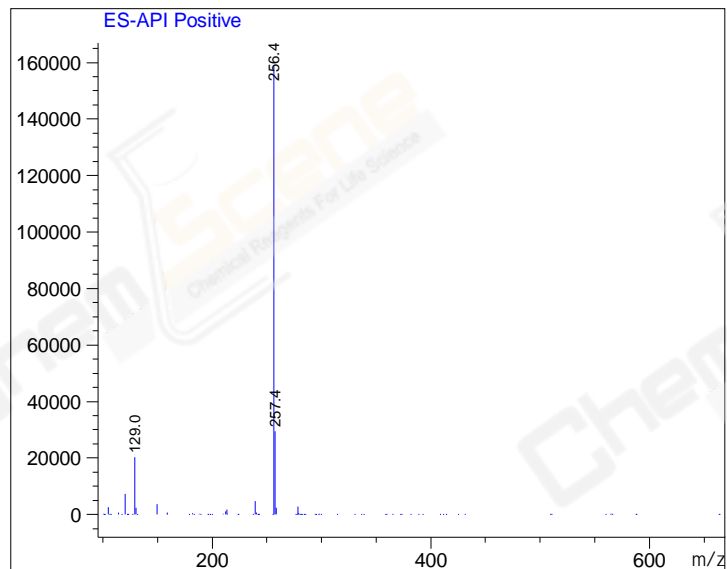
Integration Results for DAD1 B, Sig=254,4 Ref=off

RetTim	Width	Area	Height	Area%
0.94	0.05	2298.20	613.47	100.00

Integration Results for MSD1 TIC, MS File

RetTim	Width	Area	Height	Area%
0.99	0.07	2753663.00	556939.13	100.00

Ret. Time: 0.99 <<<< POSITIVE SPECTRA >>>>



*** End of Report ***