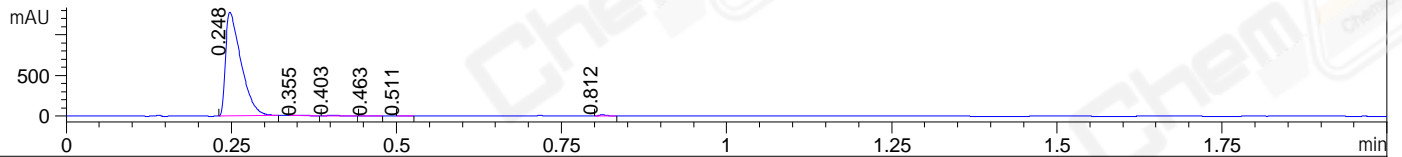
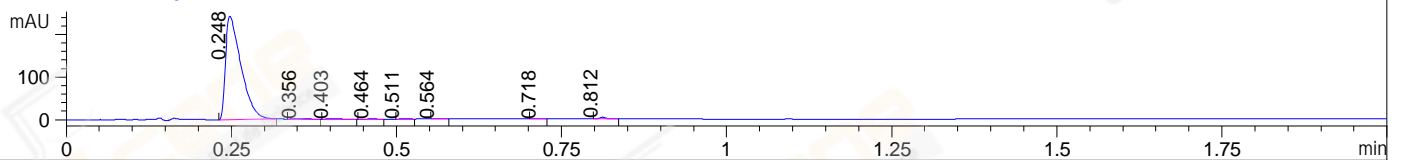


File ..0191014 2019-10-14 16-13-51\WGY7176-003-1.D Tgt Mass (CHM):
Injection Date : 14 Oct 19 5:11 pm +0800 Seq. Line : 16
Sample Name : WGY7176-003-1 Location : P1-B-02
Acq. Operator : SYSTEM Inj : 1
Spec. Reported : MS Integration Inj Volume : 0.2 ul
Acq. Method : D:\LCMS03\Data\20191014\20191014 2019-10-14 16-13-51\1-POS-UPLC2.0MIN.M
Analysis Method : D:\LCMS03\Data\20191014\20191014 2019-10-14 16-13-51\1-POS-UPLC2.0MIN.M
Catalog No : CS-4869 Batch#47129
Method Info : Mobile Phase: A: water(0.01%TFA) B:ACN(0.01%TFA)
Gradient: 5% to 95%B within 0.9 min
Flow Rate :1.0ml/min
Column :Poroshell 120 EC- C18, 2.1*50mm,1.9um A-RP-463
Oven Temperature : 45C

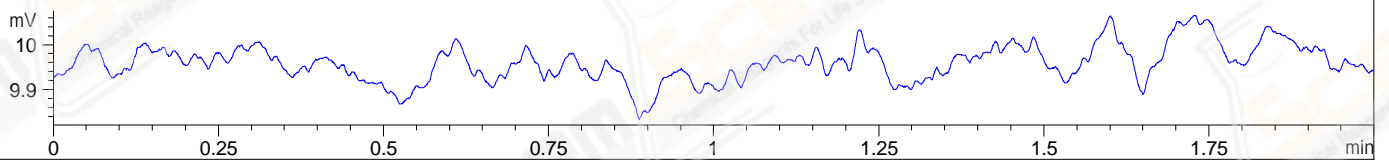
DAD1 A, Sig=214,4 Ref=off



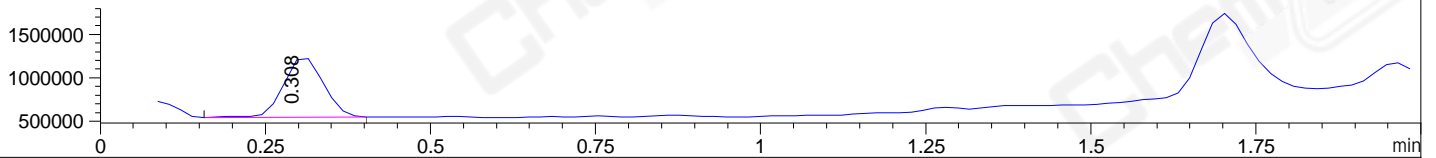
DAD1 B, Sig=254,4 Ref=off



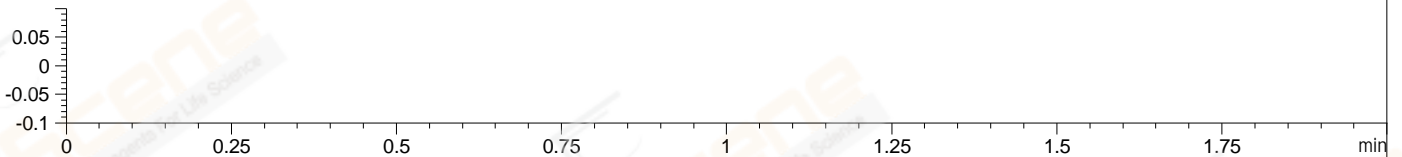
ELS1 A, ELSD Signal



MSD1 TIC, MS File ES-API, Pos, Scan, Frag: 70



Ion 1, MSD1 1, Target Mass 0 +H Positive, EIC=0.7:1.7



Integration Results for DAD1 A, Sig=214,4 Ref=off

RetTim	Width	Area	Height	Area%	MS (+)
0.25	0.03	2081.91	1274.65	98.83	234
0.36	0.02	6.76	5.55	0.32	234
0.40	0.02	7.50	7.29	0.36	114
0.46	0.02	1.44	1.20	0.07	114
0.51	0.01	1.33	2.04	0.06	114
0.81	0.01	7.71	12.66	0.37	114

Integration Results for DAD1 B, Sig=254,4 Ref=off

RetTim	Width	Area	Height	Area%	MS (+)
0.25	0.03	394.93	242.60	98.19	234
0.36	0.02	1.39	1.12	0.35	234
0.40	0.02	1.52	1.46	0.38	114
0.46	0.01	0.44	0.43	0.11	114
0.51	0.01	0.51	0.77	0.13	114
0.56	0.01	0.22	0.36	0.06	114
0.72	0.01	0.69	0.93	0.17	114
0.81	0.01	2.50	4.06	0.62	114

Integration Results for ELS1 A, ELSD Signal

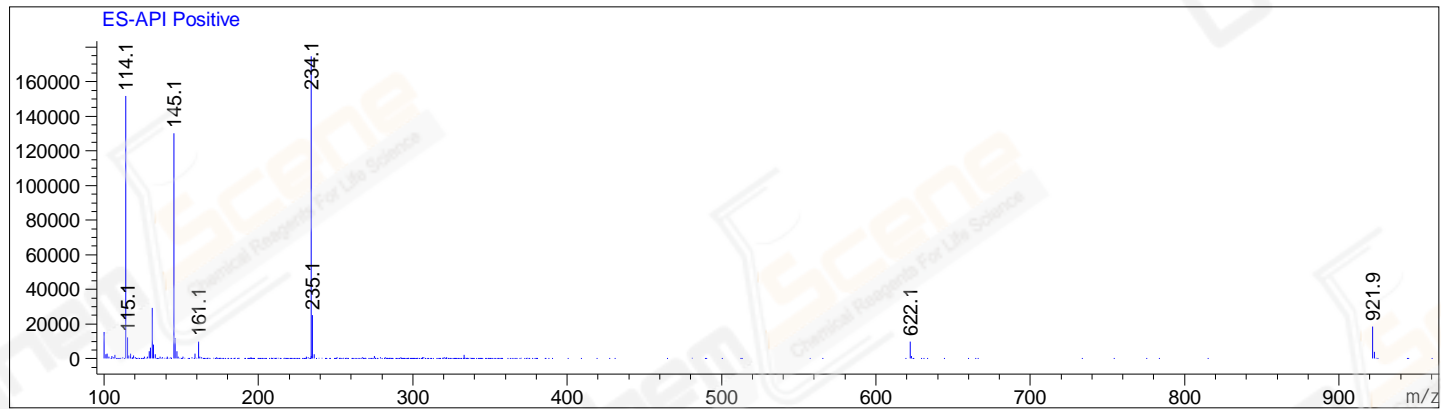
RetTim	Width	Area	Height	Area%	MS (+)
--------	-------	------	--------	-------	--------

Integration Results for MSD1 TIC, MS File

RetTim	Width	Area	Height	Area%	MS (+)
0.31	0.07	2889685.00	694457.56	100.00	234

Ret. Time: 0.31

<<<< POSITIVE SPECTRA >>>>



*** End of Report ***