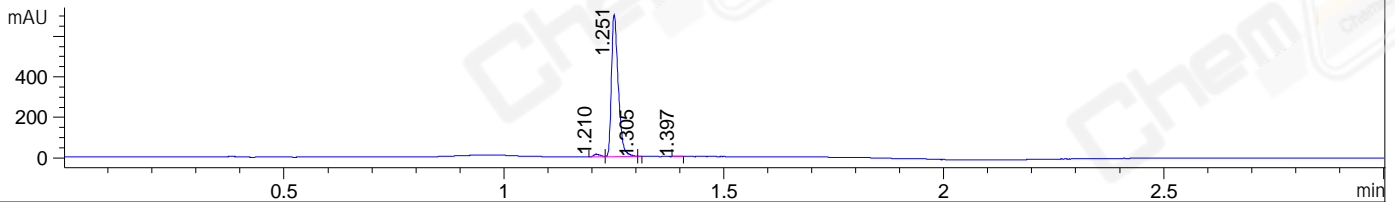
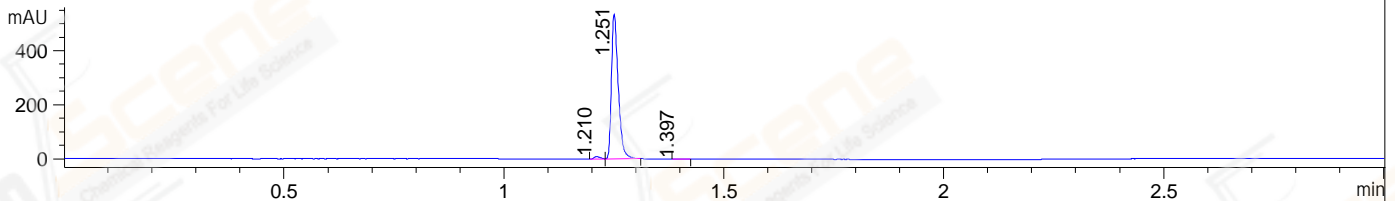


File ..\DATA\2019\20191021\734\BIZ2019-O18-SCH9.D Tgt Mass (CHM):
 Injection Date : 21 Oct 19 2:46 pm +0800 Seq. Line : 71
 Sample Name : BIZ2019-O18-SCH9 Location : P1-C-07
 Acq. Operator : ZJ_1432 Inj : 1
 Spec. Reported : MS Integration Inj Volume : 0.4 ul
 Acq. Method : D:\Chem32\1\data\2019\20191021\734\1-POS-3MIN.M
 Analysis Method : D:\CHEM32\1\DATA\2019\20191021\734\1-POS-3MIN.M
 Catalog No : CS-7693 Batch#48793
 Method Info : Mobile Phase: A: water(0.01%TFA) B:ACN(0.01%TFA)
 Gradient: 5% to 95%B within 1.3 min
 Flow Rate :1.8ml/min
 Column :SunFire C18, 4.6*50mm,3.5um A-RP-433
 Oven Temperature : 45□

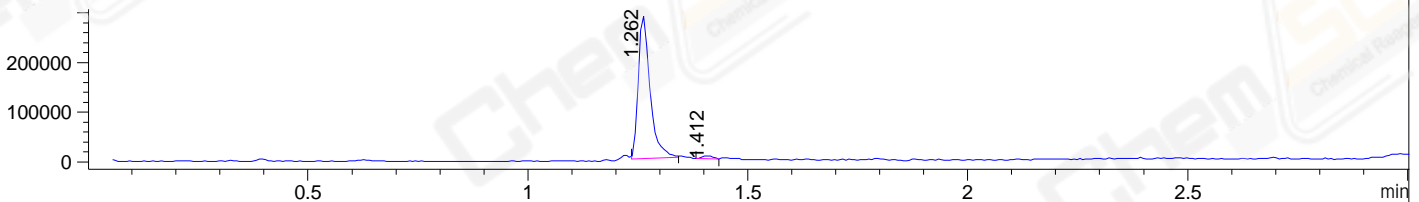
DAD1 B, Sig=214,4 Ref=off



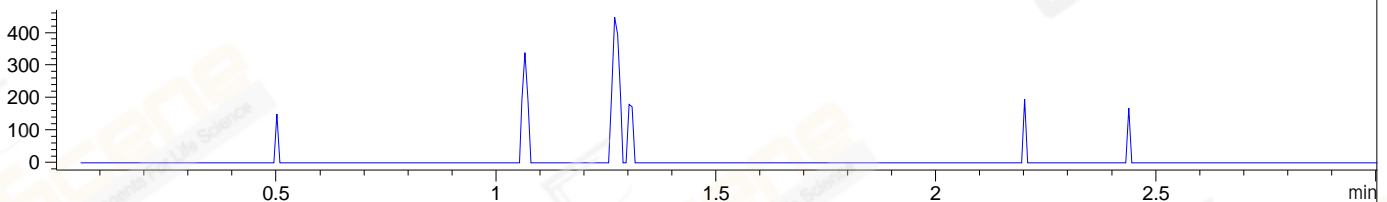
DAD1 C, Sig=254,4 Ref=off



MSD1 TIC, MS File ES-API, Pos, Scan, Frag: 70



Ion 381.09, MSD1 381.09, Target Mass 380.09 +H Positive, EIC=380.79:381.79



Integration Results for DAD1 B, Sig=214,4 Ref=off

RetTim	Width	Area	Height	Area%	MS (+)
1.21	0.02	12.32	12.55	1.62	331
1.25	0.02	747.67	703.24	98.26	345
1.31	0.00	0.19	0.65	0.02	345
1.40	0.01	0.71	1.10	0.09	345

Integration Results for DAD1 C, Sig=254,4 Ref=off

RetTim	Width	Area	Height	Area%	MS (+)
1.21	0.02	9.30	9.35	1.60	331
1.25	0.02	570.99	536.15	98.17	345
1.40	0.02	1.32	1.27	0.23	345

Integration Results for MSD1 TIC, MS File

RetTim	Width	Area	Height	Area%	MS (+)
1.26	0.03	538596.31	288637.88	98.37	345
1.41	0.02	8905.16	5953.30	1.63	345

Ret. Time: 1.26 <<<< POSITIVE SPECTRA >>>>

ES-API Positive



Ret. Time: 1.41

ES-API Positive

