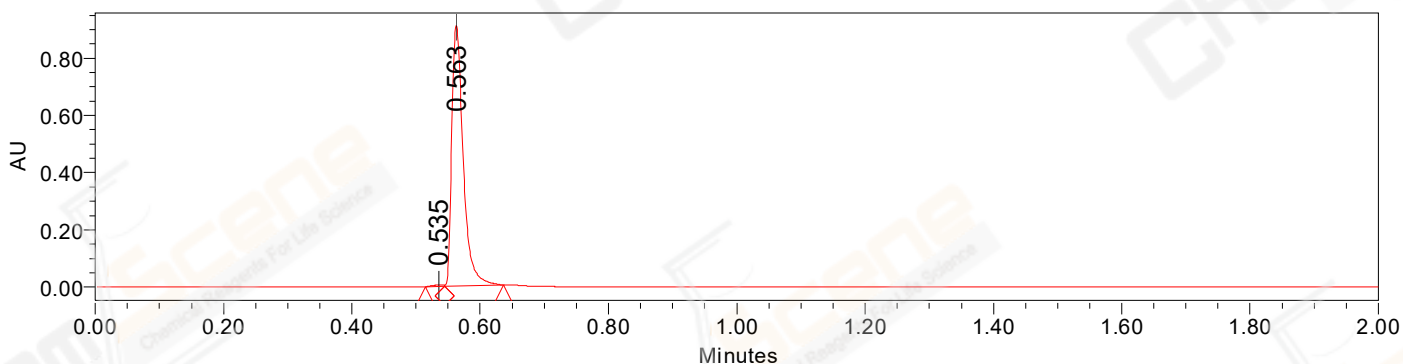


## SAMPLE INFORMATION

CAS NO.: 13614-98-7  
Sample information:  
Vial: 2:B,7  
Injection #: 1  
Injection Volume: 0.50 ul  
Run Time: 2.8 Minutes  
Sample Set Name: 20220510

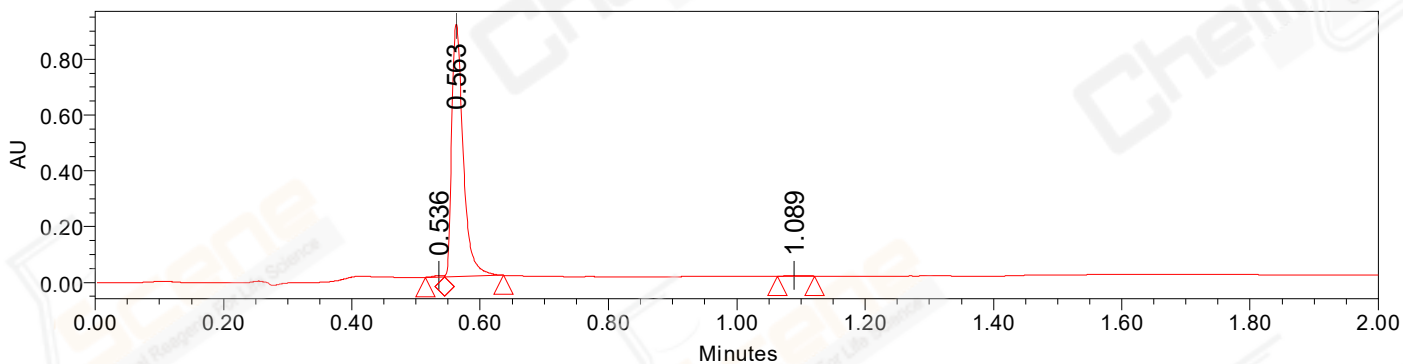
Acquired By: LY  
Date Acquired: 5/10/2022 7:12:07 PM CST  
Acq. Method Set: 1\_POS\_2MIN  
Date Processed: 5/11/2022 8:13:50 AM CST,  
Processing Method: PDA\_01, MS\_scan  
Channel Name: PDA Ch1 214nm@4.8nm, MS TIC,  
Column Name: A-RP-929

### Auto-Scaled Chromatogram



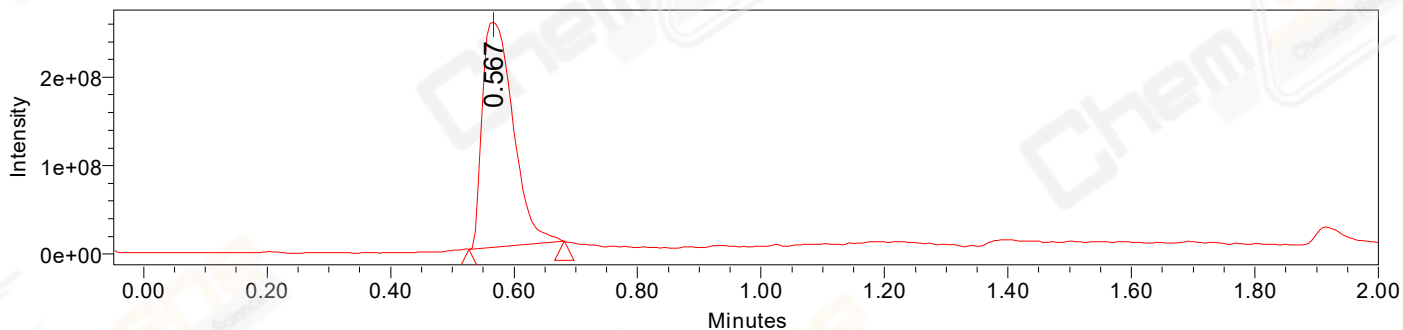
Processed Channel Descr. PDA Ch2 254nm@4.8nm

### Auto-Scaled Chromatogram



Processed Channel Descr. PDA Ch1 214nm@4.8nm

### Auto-Scaled Chromatogram



Processed Channel Descr. ACQ-SQD2 1: MS Scan MS TIC, Smoothed by 9 point Savitzky-Golay Filter., Time offset by -0.053 mins. (1: 150.00-1000.00 ES+, Centroid, CV=30)

Peak Results  
Channel Name: PDA Ch2 254nm@4.8nm

	RT	Width (sec)	Area	Height	% Area	Base Peak (Combined) (m/z)	Channel Name
1	0.535	1.800	5646	4956	0.50	228.97	PDA Ch2 254nm@4.8nm
2	0.563	5.550	1129618	909365	99.50	234.69	PDA Ch2 254nm@4.8nm

Peak Results  
Channel Name: PDA Ch1 214nm@4.8nm

	RT	Width (sec)	Area	Height	% Area	Base Peak (Combined) (m/z)	Channel Name
1	0.536	1.800	6306	5766	0.56	228.97	PDA Ch1 214nm@4.8nm
2	0.563	5.550	1120266	904093	99.15	234.69	PDA Ch1 214nm@4.8nm
3	1.089	3.450	3340	1974	0.30	152.11	PDA Ch1 214nm@4.8nm

Peak Results  
Channel Name: MS TIC

	RT	Width (sec)	Area	Height	% Area	Base Peak (Combined) (m/z)	Channel Name
1	0.567	9.285	885446166	255968178	100.00	221.27	MS TIC

Match Plot

