

SAMPLE INFORMATION

CAS NO.: 1035094-83-7

Sample information:

Vial: 2:B,6

Injection #: 1

Injection Volume: 0.30 ul

Run Time: 2.8 Minutes

Sample Set Name: 20221124

Acquired By: LY

Date Acquired: 11/24/2022 6:06:49 PM CST

Acq. Method Set: 1_POS_2MIN

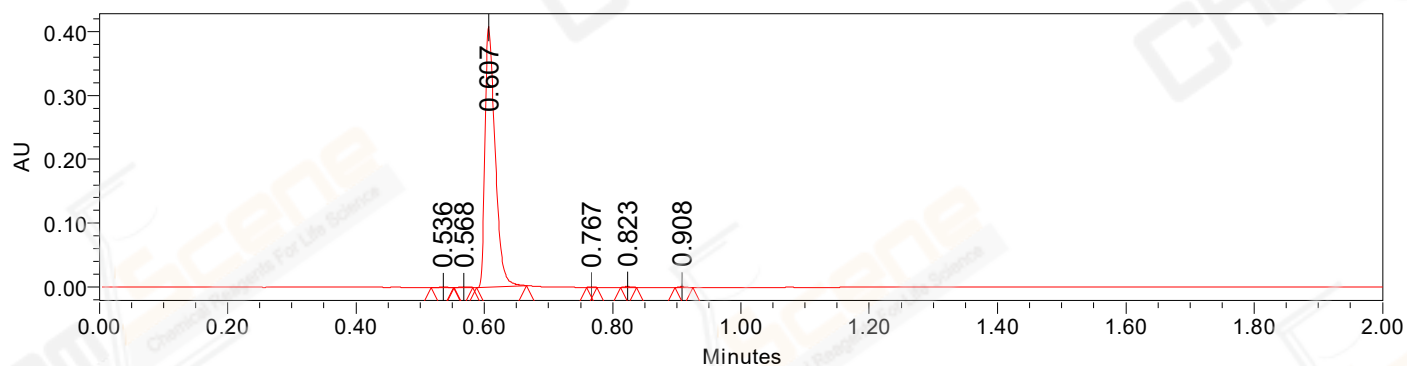
Date Processed: 11/25/2022 9:41:11 AM CST,

Processing Method: PDA_01, MS_scan

Channel Name: PDA Ch1 214nm@4.8nm, MS TIC,

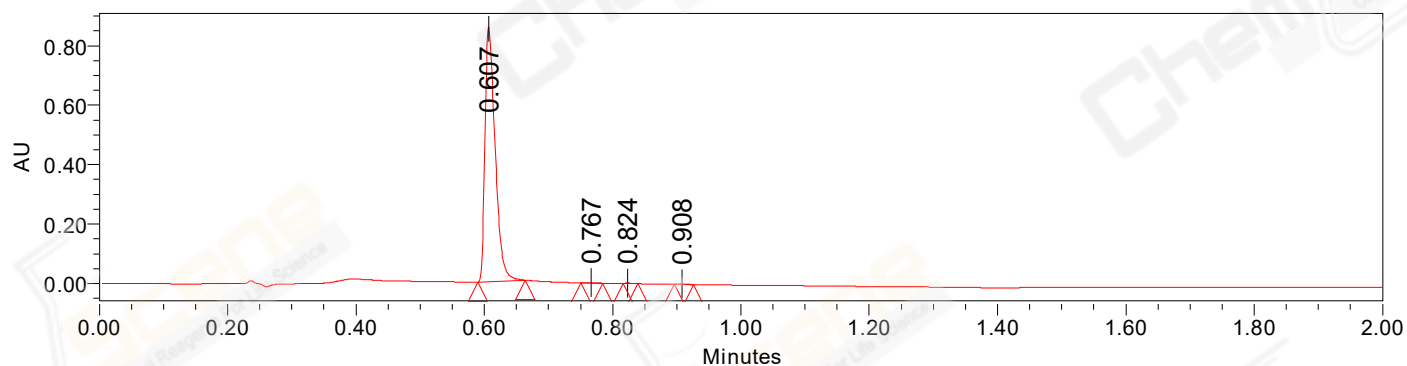
Column Name: A-RP-985

Auto-Scaled Chromatogram



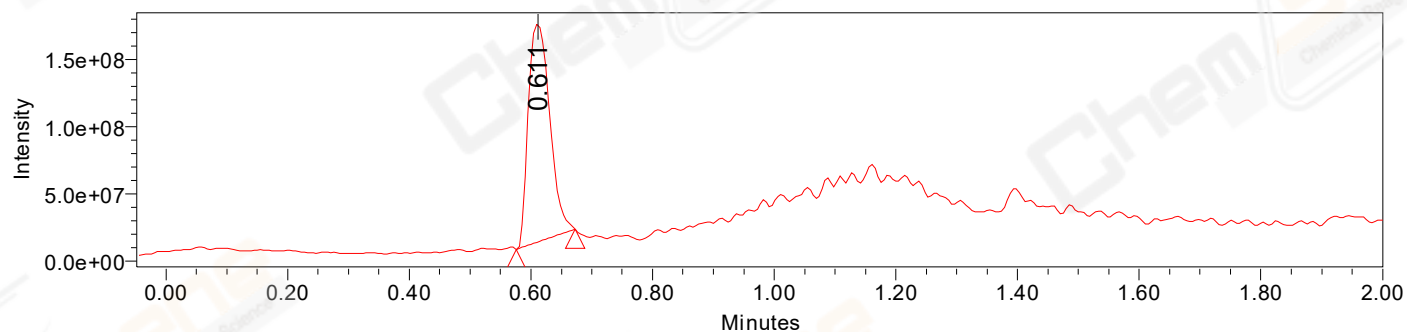
Processed Channel Descr. PDA Ch2 254nm@4.8nm

Auto-Scaled Chromatogram



Processed Channel Descr. PDA Ch1 214nm@4.8nm

Auto-Scaled Chromatogram



Processed Channel Descr. ACQ-SQD2 1: MS Scan MS TIC, Smoothed by 9 point Savitzky-Golay Filter., Time offset by -0.053 mins. (1: 150.00-1000.00 ES+, Centroid, CV=30)

Peak Results
Channel Name: PDA Ch2 254nm@4.8nm

	RT	Width (sec)	Area	Height	% Area	Base Peak (Combined) (m/z)	Channel Name
1	0.536	2.050	523	508	0.12	152.11	PDA Ch2 254nm@4.8nm
2	0.568	1.700	662	611	0.15	152.88	PDA Ch2 254nm@4.8nm
3	0.607	4.650	448421	408030	99.10	150.99	PDA Ch2 254nm@4.8nm
4	0.767	0.950	498	986	0.11	152.92	PDA Ch2 254nm@4.8nm
5	0.823	1.500	1008	1581	0.22	150.93	PDA Ch2 254nm@4.8nm
6	0.908	1.700	1398	1813	0.31	150.94	PDA Ch2 254nm@4.8nm

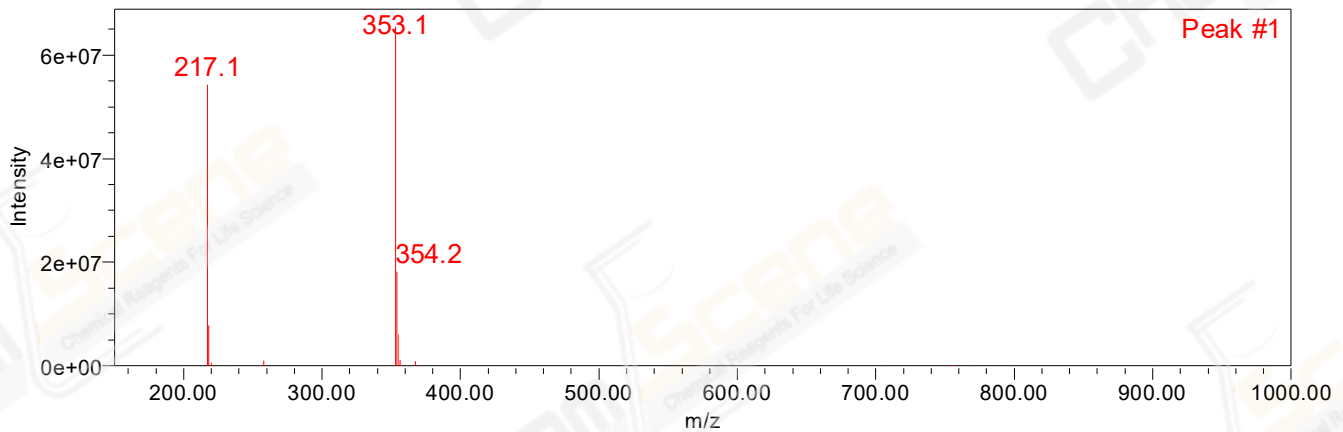
Peak Results
Channel Name: PDA Ch1 214nm@4.8nm

	RT	Width (sec)	Area	Height	% Area	Base Peak (Combined) (m/z)	Channel Name
1	0.607	4.450	945051	857854	99.71	150.99	PDA Ch1 214nm@4.8nm
2	0.767	2.000	528	824	0.06	151.02	PDA Ch1 214nm@4.8nm
3	0.824	1.400	897	1547	0.09	876.44	PDA Ch1 214nm@4.8nm
4	0.908	1.800	1341	1668	0.14	150.94	PDA Ch1 214nm@4.8nm

Peak Results
Channel Name: MS TIC

	RT	Width (sec)	Area	Height	% Area	Base Peak (Combined) (m/z)	Channel Name
1	0.611	5.803	397971971	162686743	100.00	353.15	MS TIC

Match Plot



Retention Time 0.611 Channel Name MS TIC