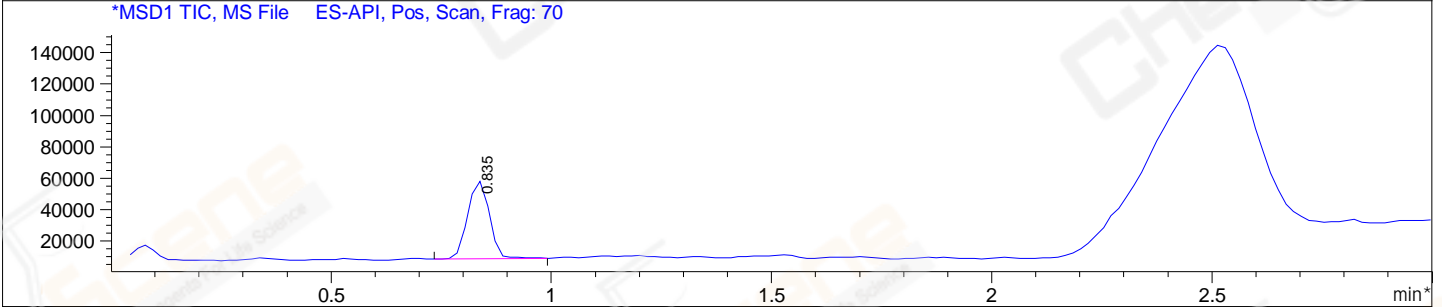
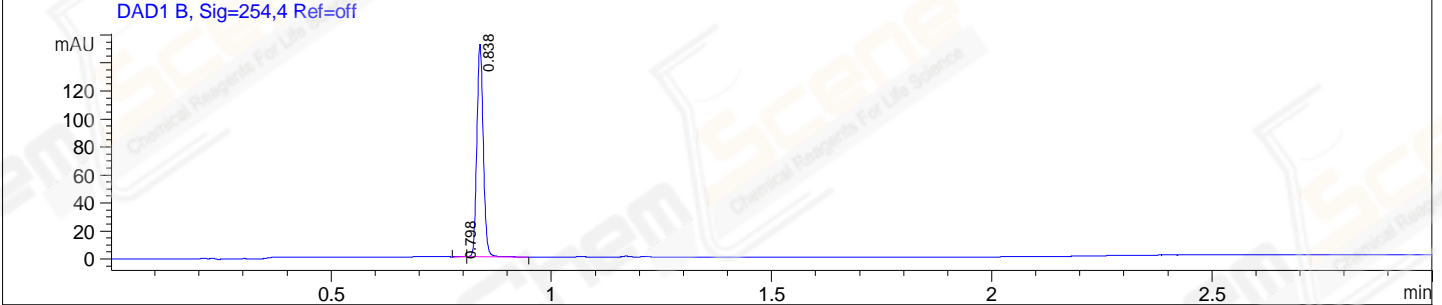
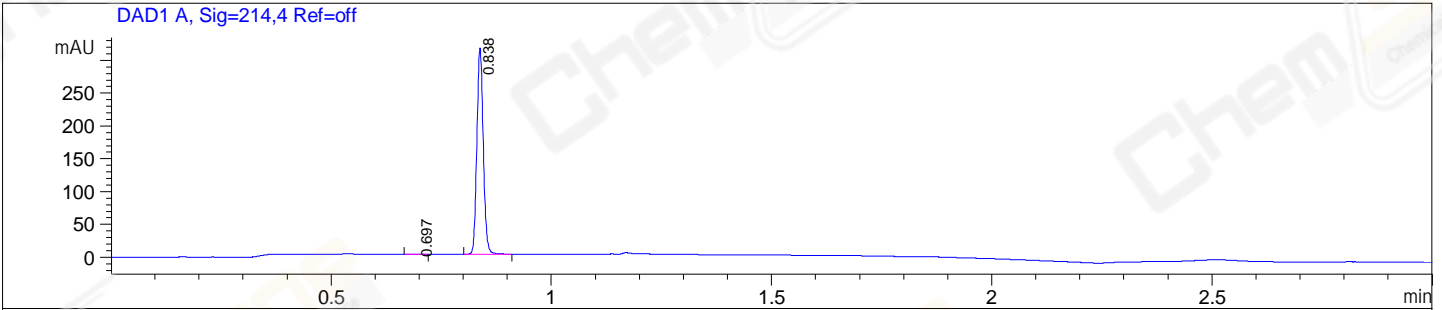


File E:\ChemStation\1\DATA\2024\2024-08\2024-08-02\BIZ2024-801-SCH12-UPLC-MS-10-040844.D  
 Injection Date : 02-Aug-24, 09:52:01 Tgt Mass(EZX) :  
 Sample Name : BIZ2024-801-SCH12 Location : P1-A-06  
 Acq. Operator : LY\_2278 Inj : 1  
 Spec. Reported : MS Integration Inj Volume : 0.2 ul  
 Acq. Method : E:\ChemStation\1\Methods\1-POS-UPLC3.0MIN(1.2)(150-1000).M  
 Analysis Method : E:\CHEMSTATION\1\METHODS\1-POS-UPLC3.0MIN(1.2)(150-1000).M  
 CAS NO. : 530-59-6 WalkUp method: '1-POS-3MIN' Project: BIZ2024  
 Method Info : Mobile Phase: A: water(0.01%TFA) B:ACN(0.01%TFA)  
 Gradient: 5% to 95%B within 4.0 min  
 Flow Rate :0.5ml/min  
 Column :ZORBAX SB-Aq, 3.0\*100mm,3.5um  
 Oven Temperature : 45C



Integration Results for DAD1 A, Sig=214,4 Ref=off

RetTim	Width	Area	Height	Area%
0.70	0.02	0.60	0.58	0.19
0.84	0.02	319.33	315.39	99.81

Integration Results for DAD1 B, Sig=254,4 Ref=off

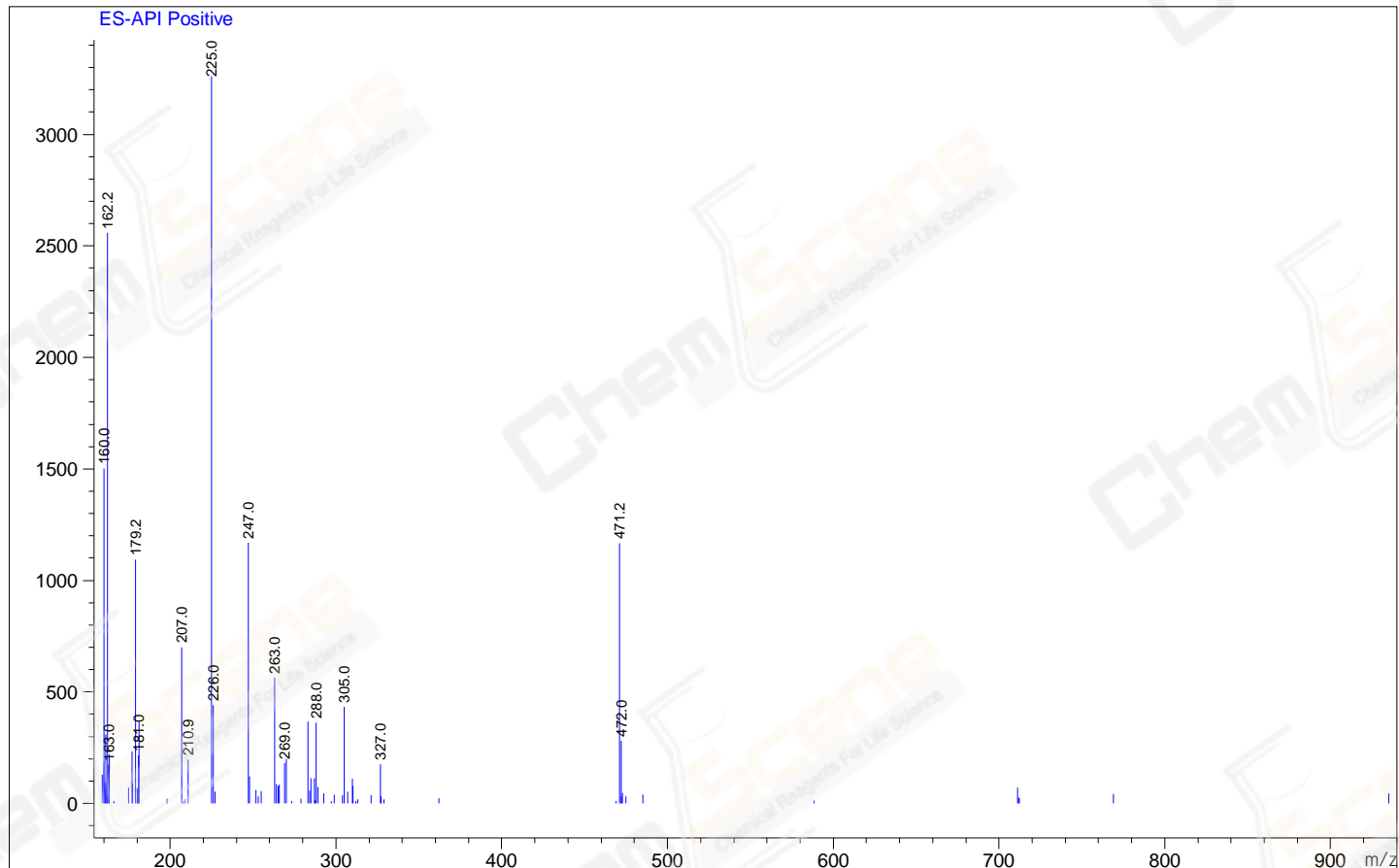
RetTim	Width	Area	Height	Area%
0.80	0.02	0.20	0.18	0.13
0.84	0.02	154.18	151.51	99.87

Integration Results for MSD1 TIC, MS File

RetTim	Width	Area	Height	Area%
0.84	0.06	172393.47	49942.77	100.00

Ret. Time: 0.84

<<<< POSITIVE SPECTRA >>>>



\*\*\* End of Report \*\*\*