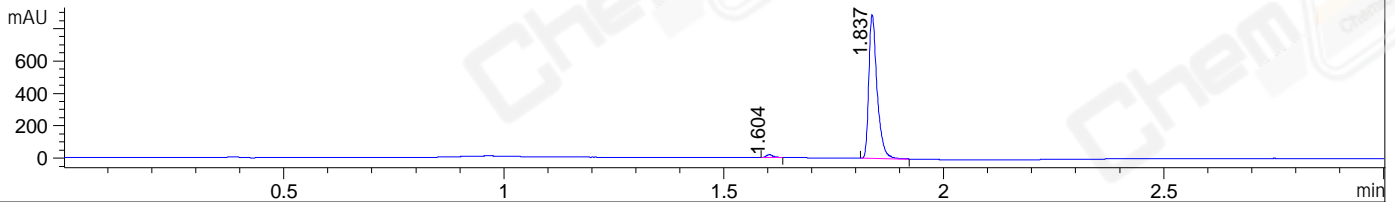
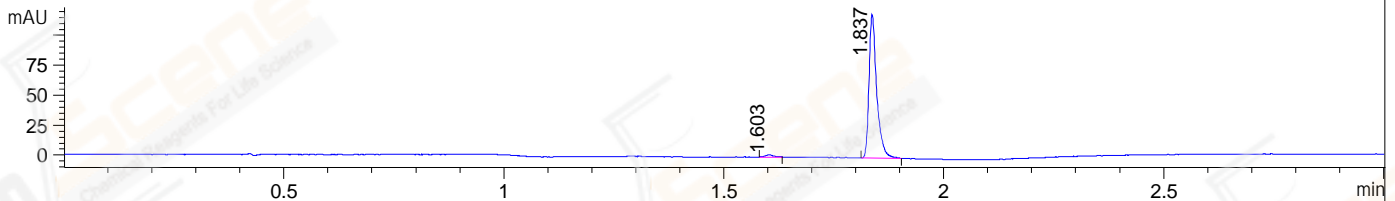


File ..DATA\2019\20191113\758\BIZ2019-N11-WMX14-.D Tgt Mass (CHM):
 Injection Date : 13 Nov 19 1:12 pm +0800 Seq. Line : 54
 Sample Name : BIZ2019-N11-WMX14 Location : P1-B-05
 Acq. Operator : ZJ_1432 Inj : 1
 Spec. Reported : MS Integration Inj Volume : 0.3 ul
 Acq. Method : D:\Chem32\1\data\2019\20191113\758\1-POS-3MIN.M
 Analysis Method : D:\CHEM32\1\DATA\2019\20191113\758\1-POS-3MIN.M
 Catalog No : CS-0019737 Batch#52208
 Method Info : Mobile Phase: A: water(0.01%TFA) B:ACN(0.01%TFA)
 Gradient: 5% to 95%B within 1.3 min
 Flow Rate :1.8ml/min
 Column :SunFire C18, 4.6*50mm,3.5um A-RP-433
 Oven Temperature : 45□

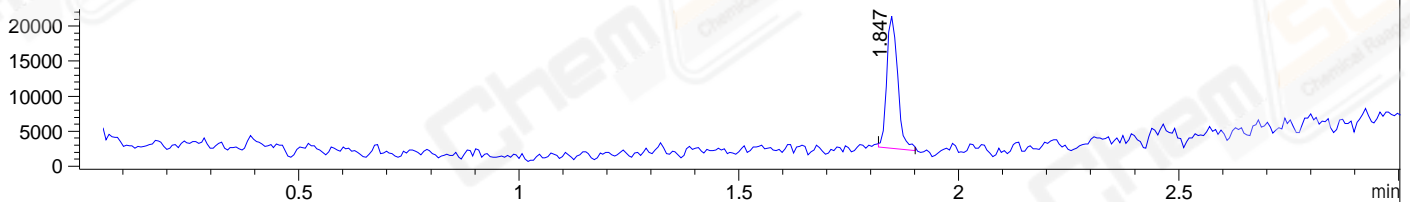
DAD1 B, Sig=214,4 Ref=off



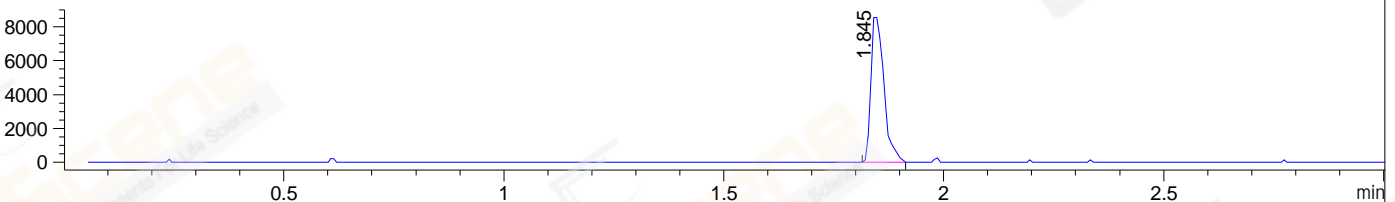
DAD1 C, Sig=254,4 Ref=off



MSD1 TIC, MS File ES-API, Pos, Scan, Frag: 70



Ion 199, MSD1 199, Target Mass 198 +H Positive, EIC=198.7:199.7



Integration Results for DAD1 B, Sig=214,4 Ref=off

RetTim	Width	Area	Height	Area%	MS (+)
1.60	0.02	18.70	17.46	1.58	ND
1.84	0.02	1161.43	889.39	98.42	199

Integration Results for DAD1 C, Sig=254,4 Ref=off

RetTim	Width	Area	Height	Area%	MS (+)
1.60	0.02	2.41	1.84	1.63	ND
1.84	0.02	145.30	120.03	98.37	199

Integration Results for MSD1 TIC, MS File

RetTim	Width	Area	Height	Area%	MS (+)
1.85	0.03	32605.06	18851.36	100.00	199

Ret. Time: 1.85

<<<< POSITIVE SPECTRA >>>>

