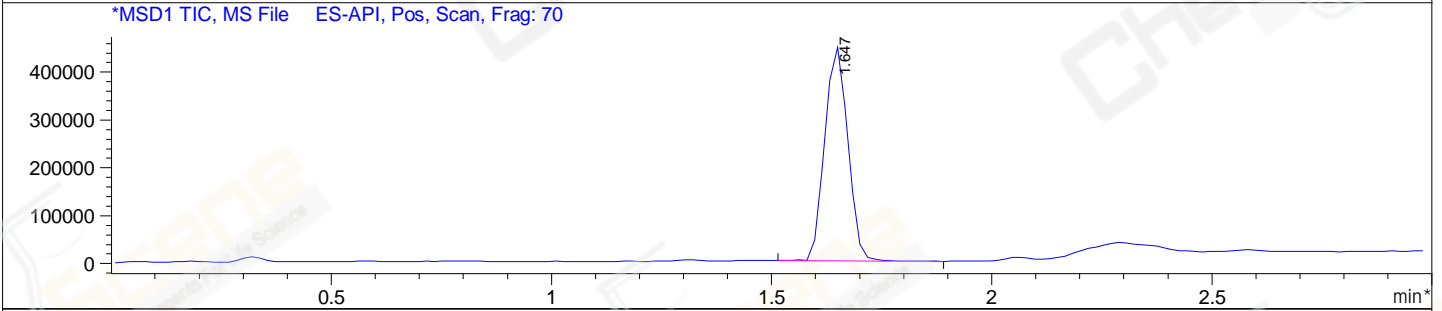
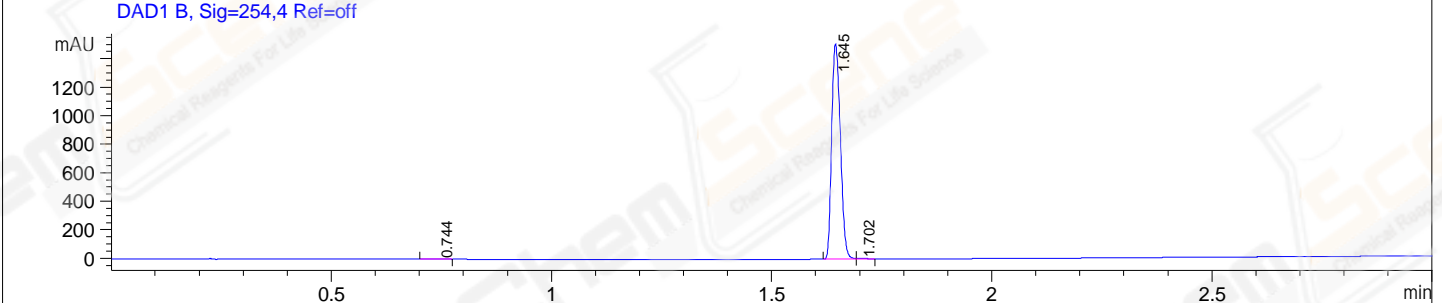
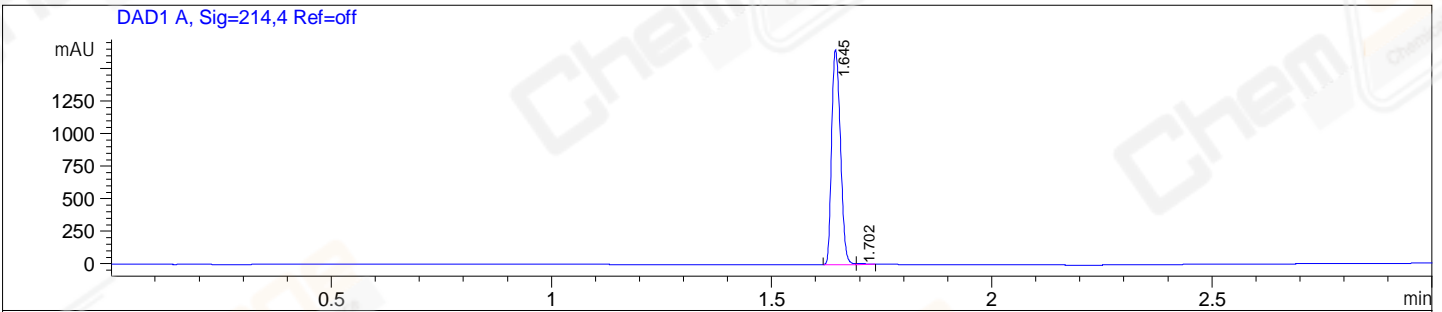


File E:\ChemStation\1\DATA\2024\2024-08\2024-08-30\BIZ2024-830-SCH86-UPLC-MS-10-043496.D  
 Injection Date : 30-Aug-24, 18:46:40 Tgt Mass(EZX) :  
 Sample Name : BIZ2024-830-SCH86 Location : P2-B-04  
 Acq. Operator : LY\_2278 Inj : 1  
 Spec. Reported : MS Integration Inj Volume : 0.8 ul  
 Acq. Method : E:\ChemStation\1\Methods\1-POS-UPLC3.0MIN(1.2)(150-1000).M  
 Analysis Method : E:\CHEMSTATION\1\METHODS\1-POS-UPLC3.0MIN(1.2)(150-1000).M  
 CAS NO. : 170569-86-5  
 Method Info : Mobile Phase: A: water(0.01%TFA) B:ACN(0.01%TFA)  
 Gradient: 5% to 95%B within 2.0 min  
 Flow Rate :1.2ml/min  
 Column :Shim-pack Scepter C18-120, 3.0\*33mm,3um  
 Oven Temperature : 45C



Integration Results for DAD1 A, Sig=214,4 Ref=off

RetTim	Width	Area	Height	Area%
1.65	0.02	2290.23	1653.05	99.56
1.70	0.02	10.05	7.11	0.44

Integration Results for DAD1 B, Sig=254,4 Ref=off

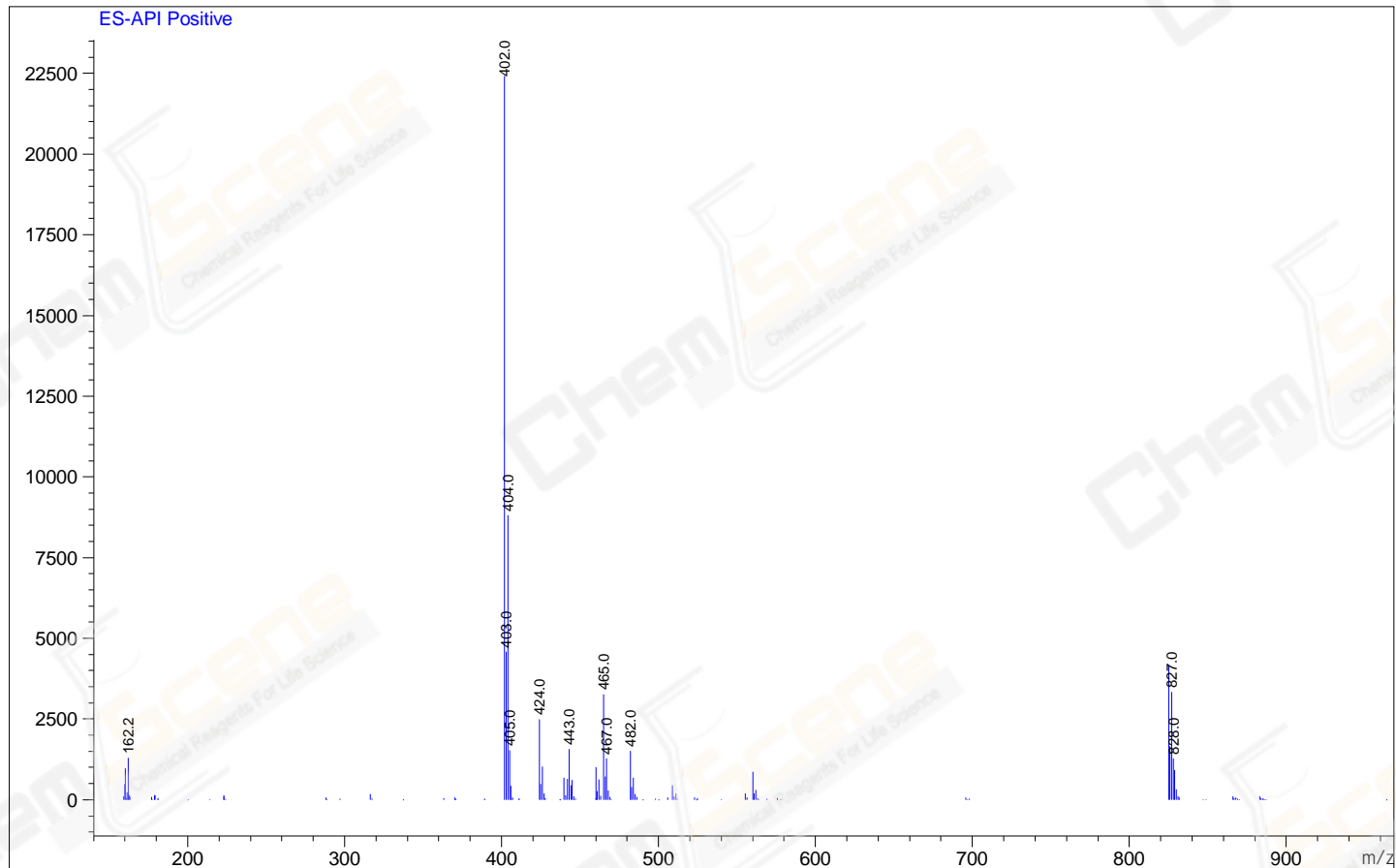
RetTim	Width	Area	Height	Area%
0.74	0.03	1.78	0.74	0.09
1.65	0.02	2073.51	1510.70	99.49
1.70	0.02	8.74	6.15	0.42

Integration Results for MSD1 TIC, MS File

RetTim	Width	Area	Height	Area%
1.65	0.06	1635751.50	447752.16	100.00

Ret. Time: 1.65

<<<< POSITIVE SPECTRA >>>>



\*\*\* End of Report \*\*\*