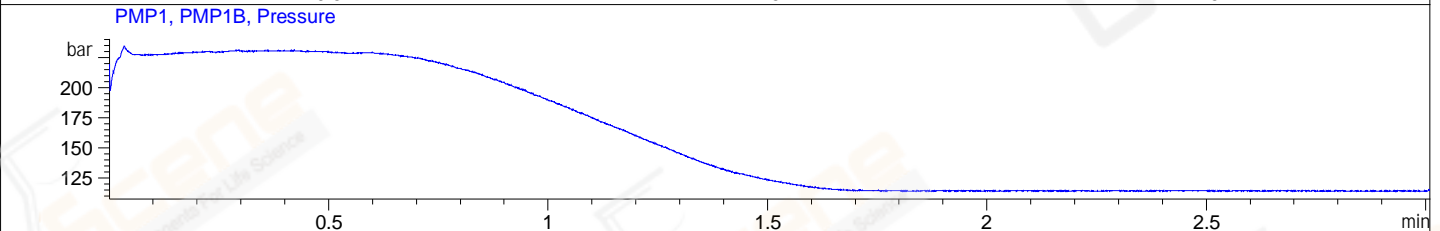
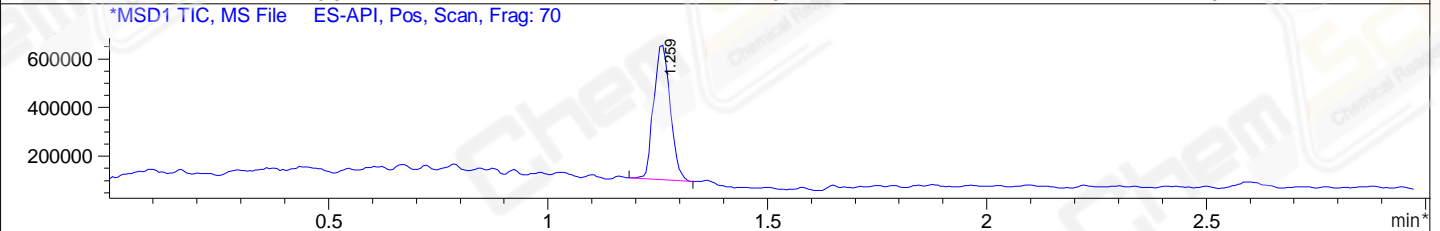
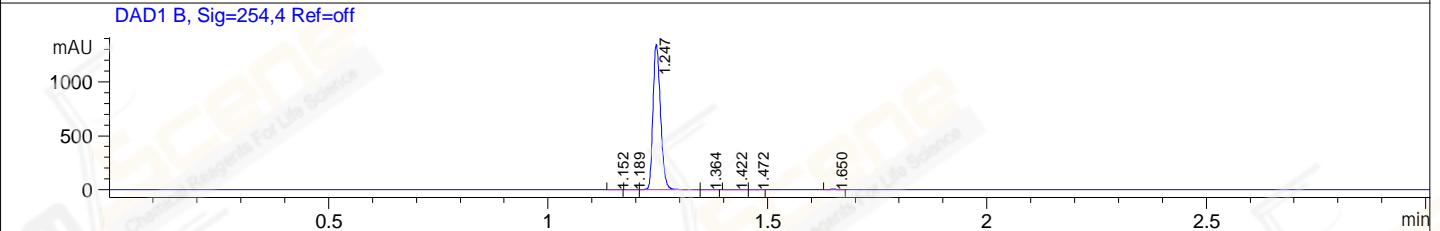
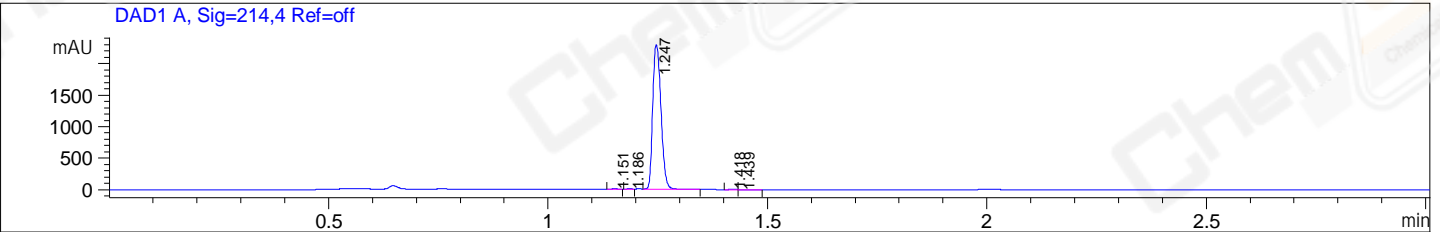


File E:\DATA\24-08\2024-08-29\HY-130907-UPLC-MS-07-051515.D
 Injection Date : 29-Aug-24, 20:21:44 Tgt Mass(EZX) :
 Sample Name : HY-130907 Location : P2-C-08
 Acq. Operator : admin Inj : 1
 Spec. Reported : MS Integration Inj Volume : 0.5 ul
 Acq. Method : E:\chem\Methods\0.6MINBQ(100-2000) C2.M
 Analysis Method : E:\chem\Methods\0.6MINBQ(100-2000) C2.M
 CAS NO. : 2170484-59-8 WalkUp method: '0.6MINBQ' Leader: LZJ
 Method Info : Mobile Phase: A: water(0.01%TFA) B:ACN(0.01%TFA)
 Gradient: 5% to 95%B within 1.3 min
 Flow Rate :1.8ml/min
 Column :Shim-pack Scepter C18,3um,4.6x50mm,A-RP-1104
 Oven Temperature : 45C



Integration Results for DAD1 A, Sig=214,4 Ref=off

RetTim	Width	Area	Height	Area%
1.15	0.02	7.49	7.65	0.25
1.19	0.01	4.12	5.39	0.14
1.25	0.02	2995.78	2305.27	99.35
1.42	0.02	4.53	4.03	0.15
1.44	0.02	3.33	2.44	0.11

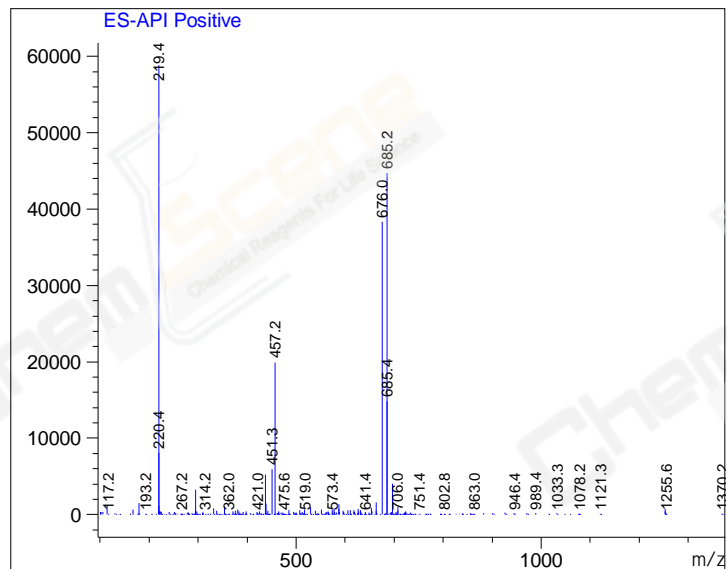
Integration Results for DAD1 B, Sig=254,4 Ref=off

RetTim	Width	Area	Height	Area%
1.15	0.02	1.79	1.85	0.11
1.19	0.02	1.45	1.45	0.09
1.25	0.02	1598.83	1323.23	99.39
1.36	0.02	1.13	1.03	0.07
1.42	0.02	2.12	1.47	0.13
1.47	0.02	0.98	0.90	0.06
1.65	0.02	2.39	2.00	0.15

Integration Results for MSD1 TIC, MS File

RetTim	Width	Area	Height	Area%
1.26	0.04	1448948.88	558358.69	100.00

Ret. Time: 1.26 <<<< POSITIVE SPECTRA >>>>



*** End of Report ***