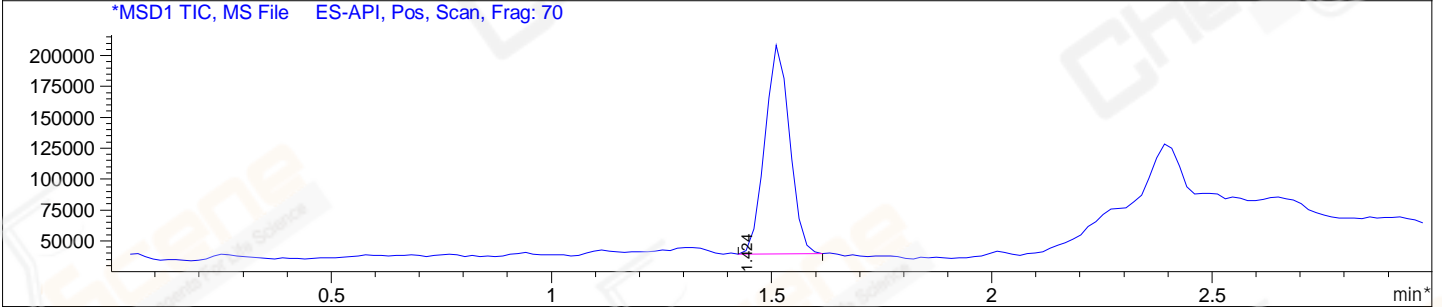
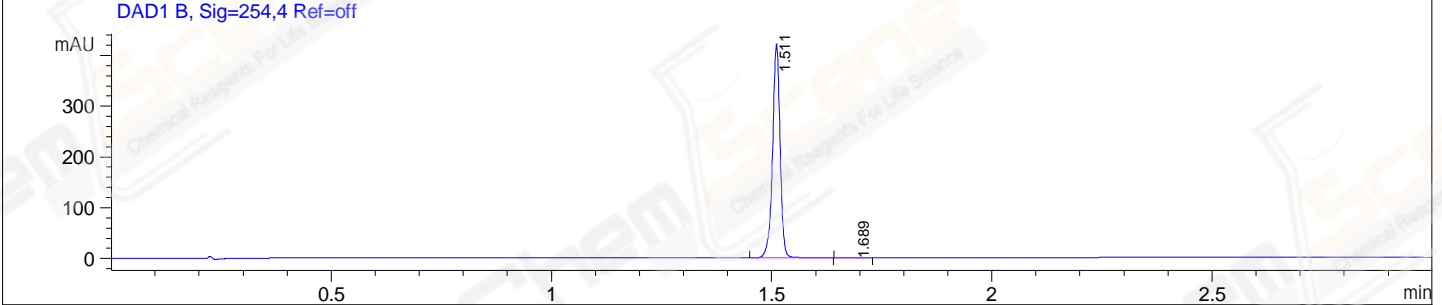
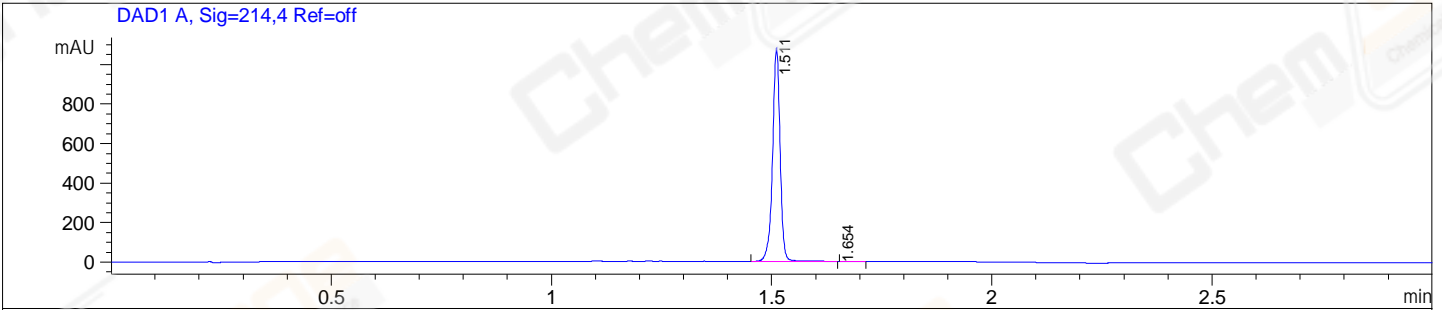


File E:\ChemStation\1\DATA\2024\2024-02\2024-02-21\CPK2024-221-55368-UPLC-MS-10-026729.D  
 Injection Date : 21-Feb-24, 12:01:24 Tgt Mass(EZX) :  
 Sample Name : CPK2024-221-55368 Location : P1-B-07  
 Acq. Operator : LY\_2278 Inj : 1  
 Spec. Reported : MS Integration Inj Volume : 0.8 ul  
 Acq. Method : E:\ChemStation\1\Methods\1-POS-UPLC3.0MIN(1.2)(150-1000).M  
 Analysis Method : E:\CHEMSTATION\1\METHODS\1-POS-UPLC3.0MIN(1.2)(150-1000).M  
 CAS NO. : 648449-76-7 WalkUp method: '1-POS-3MIN' Project: CPK2024  
 Method Info : Mobile Phase: A: water(0.01%TFA) B:ACN(0.01%TFA)  
 Gradient: 5% to 95%B within 2.0 min  
 Flow Rate :1.2ml/min  
 Column :Shim-pack Scepter C18-120, 3.0\*33mm,3um  
 Oven Temperature : 45C



Integration Results for DAD1 A, Sig=214,4 Ref=off

RetTim	Width	Area	Height	Area%
1.51	0.02	1280.99	1078.83	99.95
1.65	0.04	0.63	0.02	0.05

Integration Results for DAD1 B, Sig=254,4 Ref=off

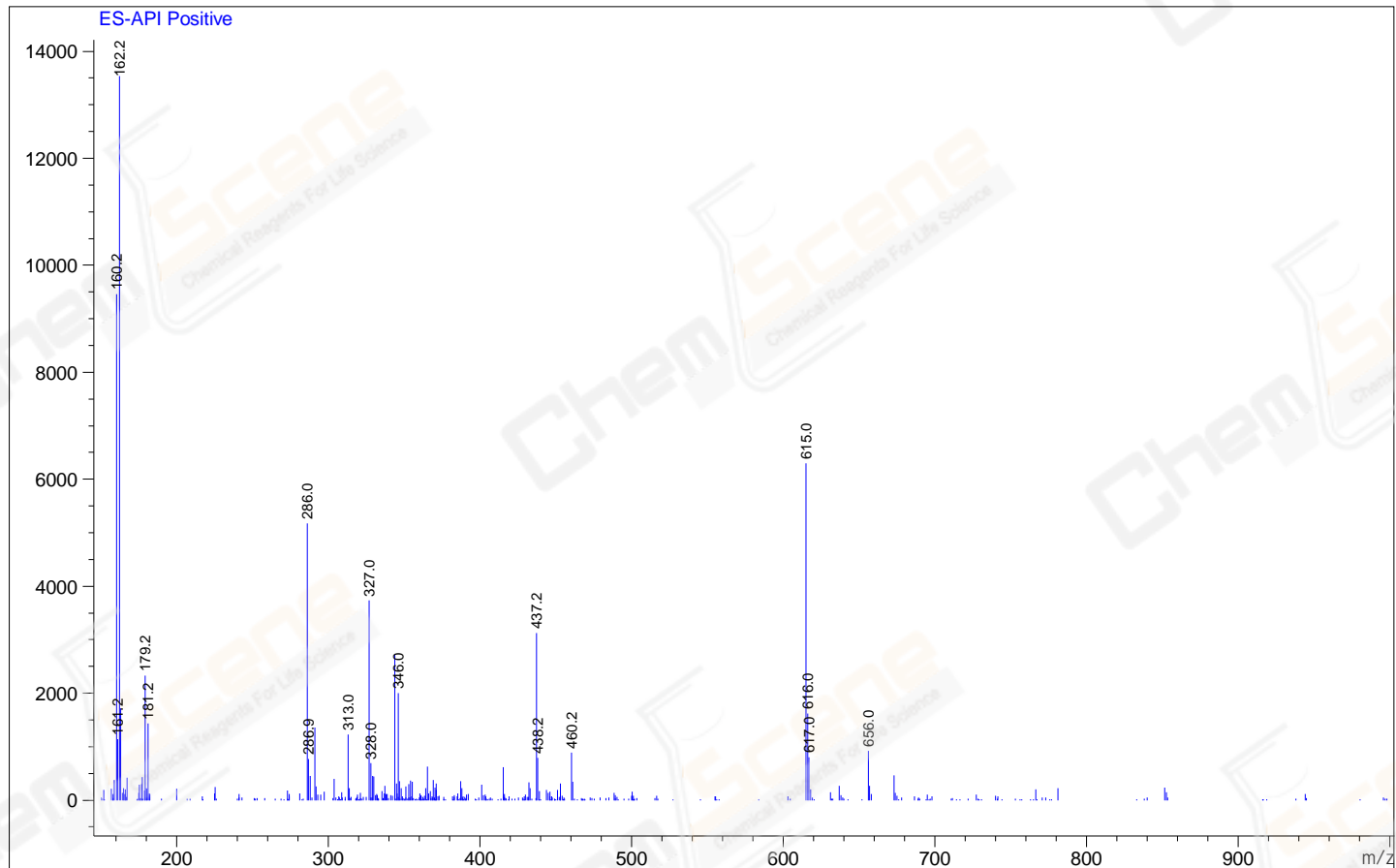
RetTim	Width	Area	Height	Area%
1.51	0.02	501.09	420.70	99.92
1.69	0.03	0.40	0.18	0.08

Integration Results for MSD1 TIC, MS File

RetTim	Width	Area	Height	Area%
1.42	0.06	660299.69	155.40	100.00

Ret. Time: 1.42

&lt;&lt;&lt;&lt; POSITIVE SPECTRA &gt;&gt;&gt;&gt;



\*\*\* End of Report \*\*\*