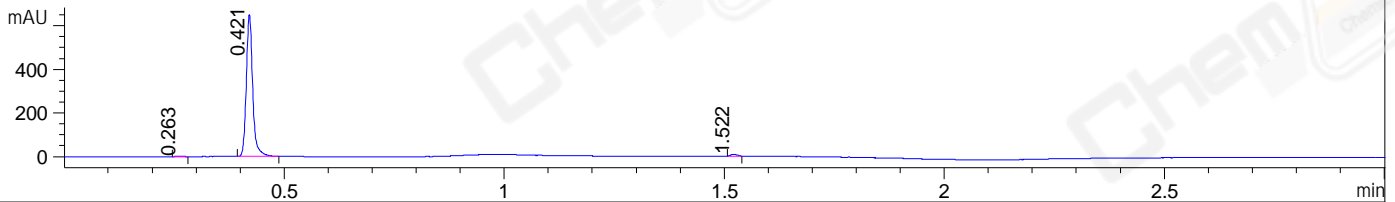
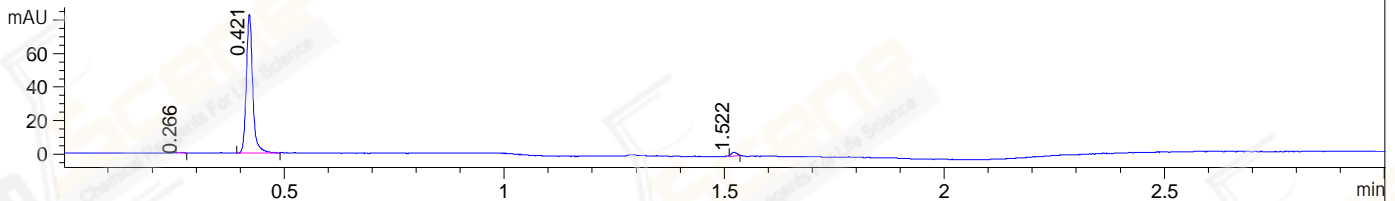


File ..DATA\2019\20191118\761\BIZ2019-N15-SCH7--.D Tgt Mass (CHM):  
Injection Date : 18 Nov 19 2:25 pm +0800 Seq. Line : 63  
Sample Name : BIZ2019-N15-SCH7 Location : P1-B-03  
Acq. Operator : ZJ\_1432 Inj : 1  
Spec. Reported : MS Integration Inj Volume : 0.2 ul  
Acq. Method : D:\Chem32\1\data\2019\20191118\761\1-POS-3MIN.M  
Analysis Method : D:\CHEM32\1\DATA\2019\20191118\761\1-POS-3MIN.M  
Catalog No : CS-0013171 Batch#55534  
Method Info : Mobile Phase: A: water(0.01%TFA) B:ACN(0.01%TFA)  
Gradient: 5% to 95%B within 1.3 min  
Flow Rate :1.8ml/min  
Column :SunFire C18, 4.6\*50mm,3.5um A-RP-433  
Oven Temperature : 45□

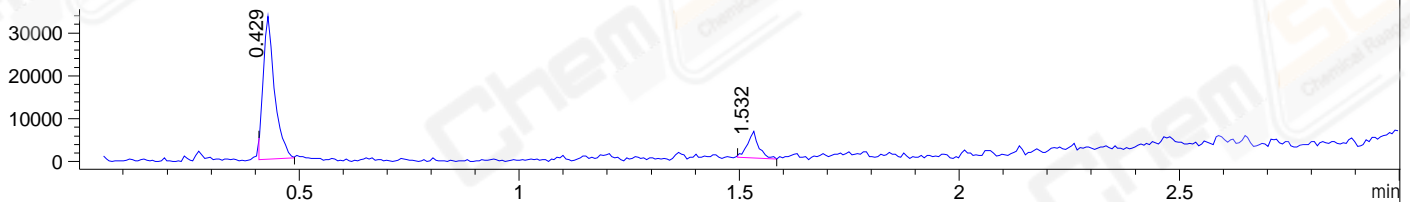
DAD1 B, Sig=214,4 Ref=off



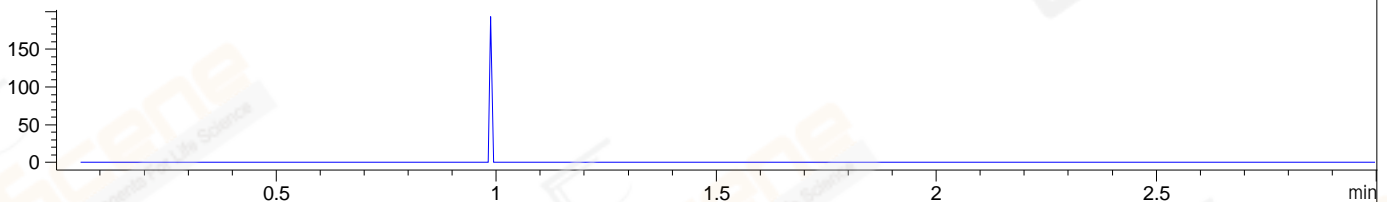
DAD1 C, Sig=254,4 Ref=off



MSD1 TIC, MS File ES-API, Pos, Scan, Frag: 70



Ion 213, MSD1 213, Target Mass 212 +H Positive, EIC=212.7:213.7



Integration Results for DAD1 B, Sig=214,4 Ref=off

RetTim	Width	Area	Height	Area%	MS (+)
0.26	0.02	2.75	2.55	0.41	ND
0.42	0.02	652.28	651.17	98.33	177
1.52	0.02	8.32	8.40	1.25	198

Integration Results for DAD1 C, Sig=254,4 Ref=off

RetTim	Width	Area	Height	Area%	MS (+)
0.27	0.01	0.22	0.27	0.26	ND
0.42	0.02	82.86	82.84	97.35	177
1.52	0.02	2.03	2.20	2.39	200

Integration Results for MSD1 TIC, MS File

RetTim	Width	Area	Height	Area%	MS (+)
0.43	0.03	59929.46	33352.93	84.48	177
1.53	0.02	11013.71	6232.29	15.52	ND

Ret. Time: 0.43

<<<< POSITIVE SPECTRA >>>>

ES-API Positive

