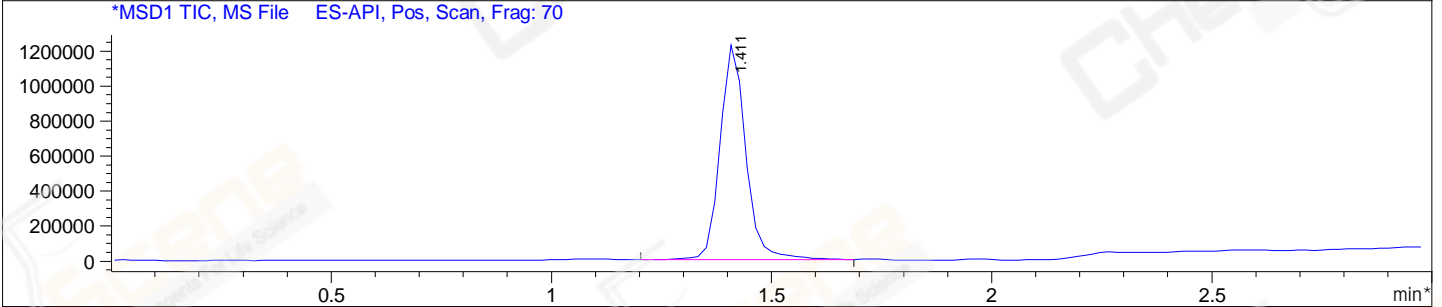
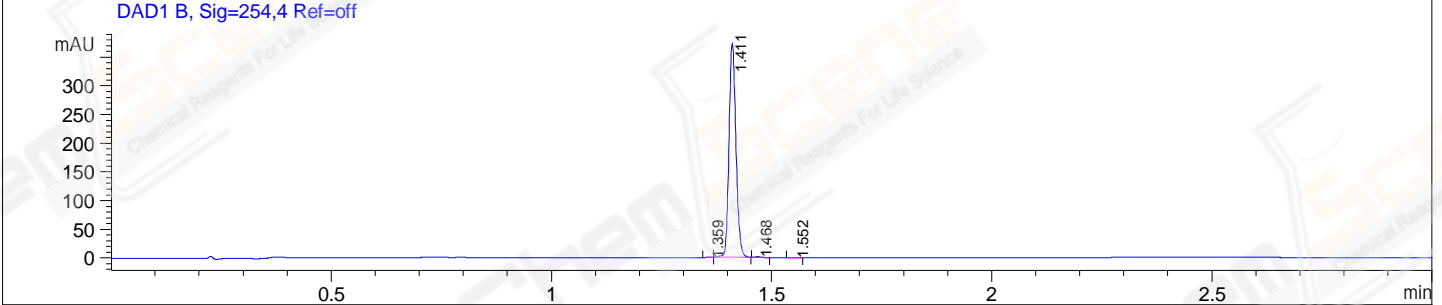
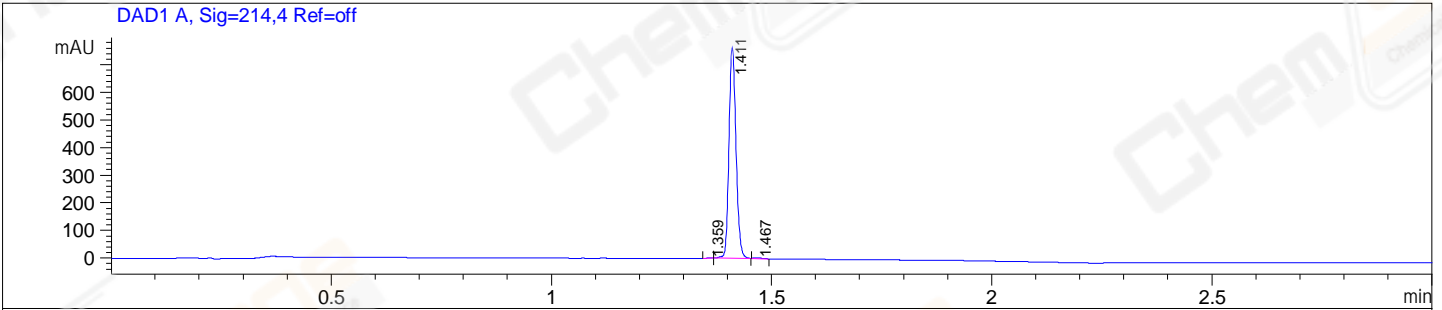


File E:\ChemStation\1\DATA\2024\2024-09\2024-09-18\BIZ2024-914-WLQ96-UPLC-MS-10-044974.D
 Injection Date : 18-Sep-24, 09:48:32 Tgt Mass(EZX) :
 Sample Name : BIZ2024-914-WLQ96 Location : P1-B-04
 Acq. Operator : LY_2278 Inj : 1
 Spec. Reported : MS Integration Inj Volume : 0.8 ul
 Acq. Method : E:\ChemStation\1\Methods\1-POS-UPLC3.0MIN(1.2)(150-2000).M
 Analysis Method : E:\CHEMSTATION\1\METHODS\1-POS-UPLC3.0MIN(1.2)(150-2000).M
 CAS NO. : 2170484-59-8
 Method Info : Mobile Phase: A: water(0.01%TFA) B:ACN(0.01%TFA)
 Gradient: 5% to 95%B within 2.0 min
 Flow Rate :1.2ml/min
 Column :Shim-pack Scepter C18-120, 3.0*33mm,3um
 Oven Temperature : 45C



Integration Results for DAD1 A, Sig=214,4 Ref=off

RetTim	Width	Area	Height	Area%
1.36	0.01	1.25	1.58	0.15
1.41	0.02	845.74	761.06	99.50
1.47	0.02	2.96	2.75	0.35

Integration Results for DAD1 B, Sig=254,4 Ref=off

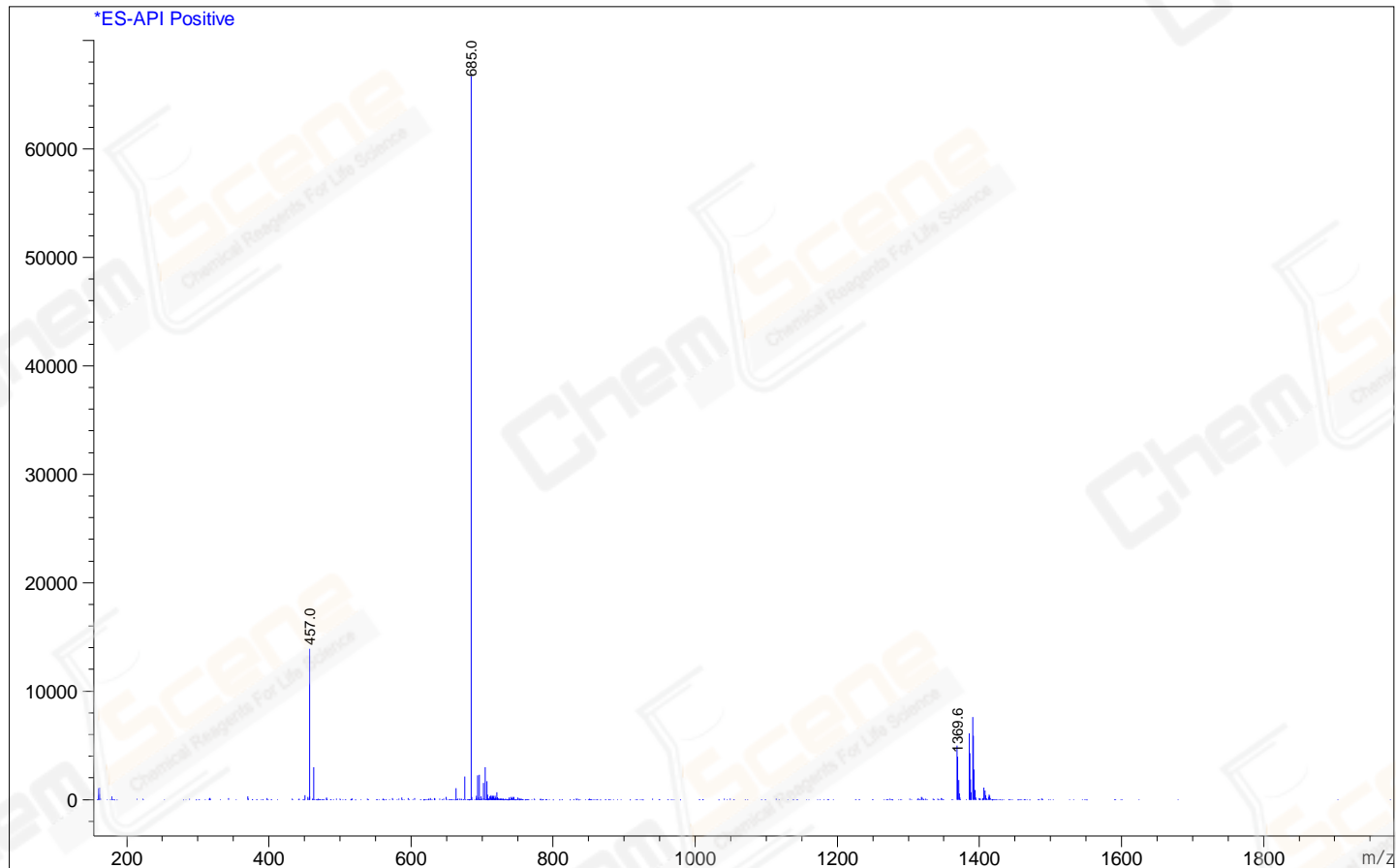
RetTim	Width	Area	Height	Area%
1.36	0.01	0.55	0.70	0.13
1.41	0.02	407.48	371.29	99.50
1.47	0.02	1.23	1.13	0.30
1.55	0.02	0.28	0.28	0.07

Integration Results for MSD1 TIC, MS File

RetTim	Width	Area	Height	Area%
1.41	0.06	4976160.00	1231266.13	100.00

Ret. Time: 1.41

<<<< POSITIVE SPECTRA >>>>



*** End of Report ***