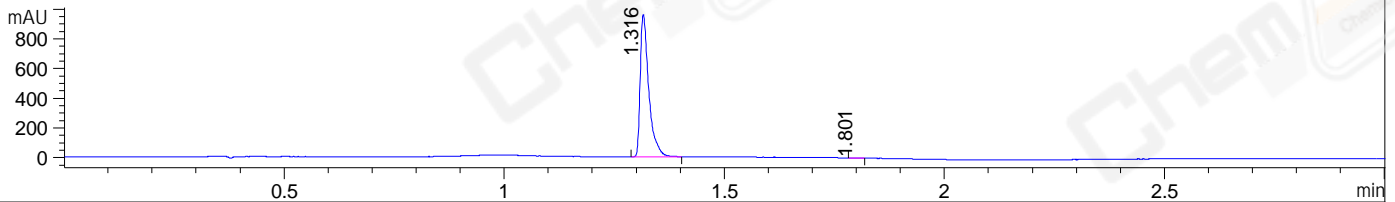
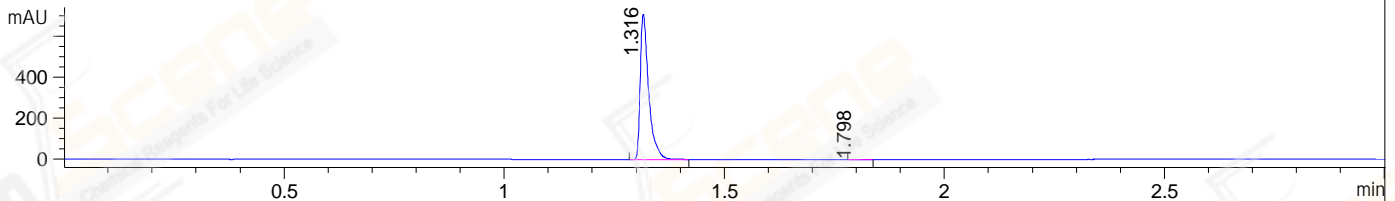


File ..1\DATA\2019\20191202\781\BIZ2019-N29-CXL5.D Tgt Mass (CHM):  
Injection Date : 2 Dec 19 10:58 am +0800 Seq. Line : 22  
Sample Name : BIZ2019-N29-CXL5 Location : P1-A-09  
Acq. Operator : ZJ\_1432 Inj : 1  
Spec. Reported : MS Integration Inj Volume : 1 ul  
Acq. Method : D:\Chem32\1\data\2019\20191202\781\1-POS-3MIN.M  
Analysis Method : D:\CHEM32\1\DATA\2019\20191202\781\1-POS-3MIN.M  
Catalog No : CS-5413 Batch#56964  
Method Info : Mobile Phase: A: water(0.01%TFA) B:ACN(0.01%TFA)  
Gradient: 5% to 95%B within 1.3 min  
Flow Rate :1.8ml/min  
Column :SunFire C18, 4.6\*50mm,3.5um A-RP-433  
Oven Temperature : 45□

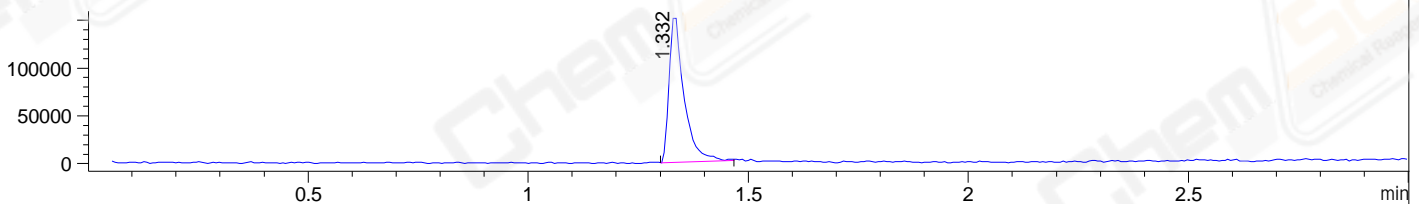
DAD1 B, Sig=214,4 Ref=off



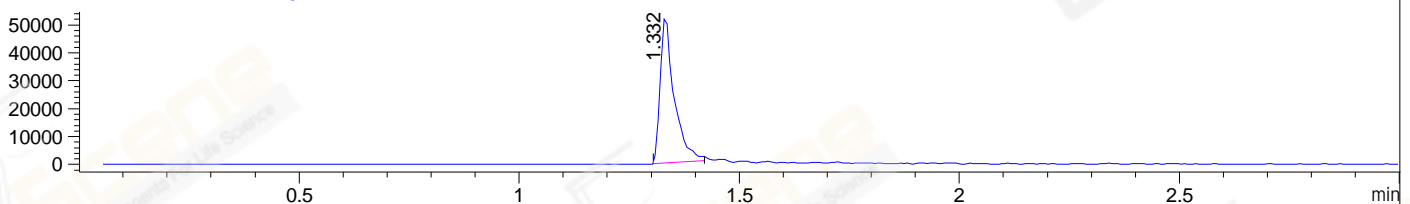
DAD1 C, Sig=254,4 Ref=off



MSD1 TIC, MS File ES-API, Pos, Scan, Frag: 70



Ion 487, MSD1 487, Target Mass 486 +H Positive, EIC=486.7:487.7



Integration Results for DAD1 B, Sig=214,4 Ref=off

RetTim	Width	Area	Height	Area%	MS (+)
1.32	0.02	1286.97	960.15	99.88	487
1.80	0.02	1.57	1.40	0.12	ND

Integration Results for DAD1 C, Sig=254,4 Ref=off

RetTim	Width	Area	Height	Area%	MS (+)
1.32	0.02	941.61	708.57	99.82	487
1.80	0.03	1.72	0.91	0.18	ND

Integration Results for MSD1 TIC, MS File

RetTim	Width	Area	Height	Area%	MS (+)
1.33	0.03	358397.81	154729.33	100.00	487

Ret. Time: 1.33

<<<< POSITIVE SPECTRA >>>>

ES-API Positive

