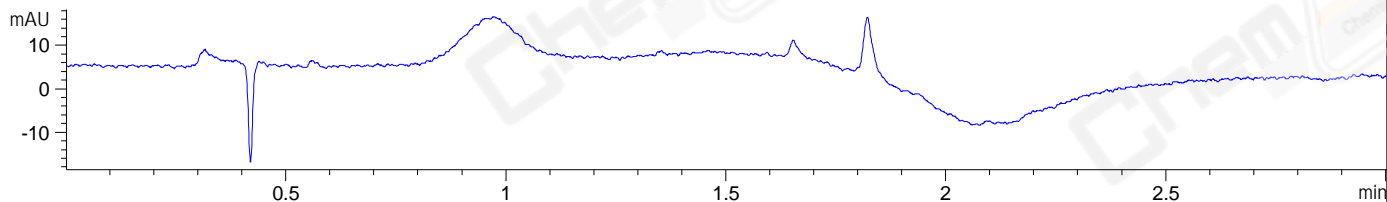
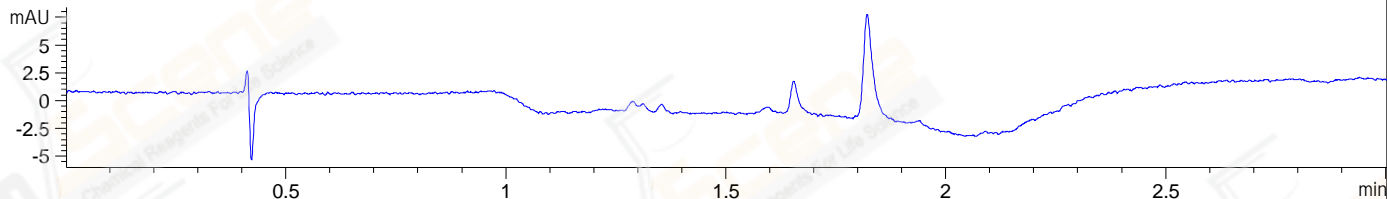


File D:\CHEM32\1\DATA\2019\20191025\741\BLANK2.D Tgt Mass (CHM):  
Injection Date : 25 Oct 19 9:45 am +0800 Seq. Line : 13  
Sample Name : BLANK Location : P1-F-07  
Acq. Operator : ZJ\_1432 Inj : 2  
Spec. Reported : MS Integration Inj Volume : 1 ul  
Acq. Method : D:\Chem32\1\data\2019\20191025\741\1-POS-3MIN.M  
Analysis Method : D:\CHEM32\1\DATA\2019\20191025\741\1-POS-3MIN.M  
Catalog No : CS-0018421 Batch# 57146 BLANK  
Method Info : Mobile Phase: A: water(0.01%TFA) B:ACN(0.01%TFA)  
Gradient: 5% to 95%B within 1.3 min  
Flow Rate :1.8ml/min  
Column :SunFire C18, 4.6\*50mm,3.5um A-RP-433  
Oven Temperature : 45□

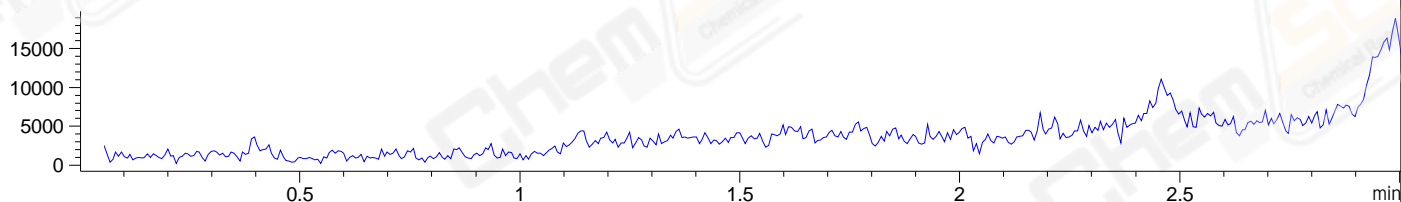
DAD1 B, Sig=214,4 Ref=off



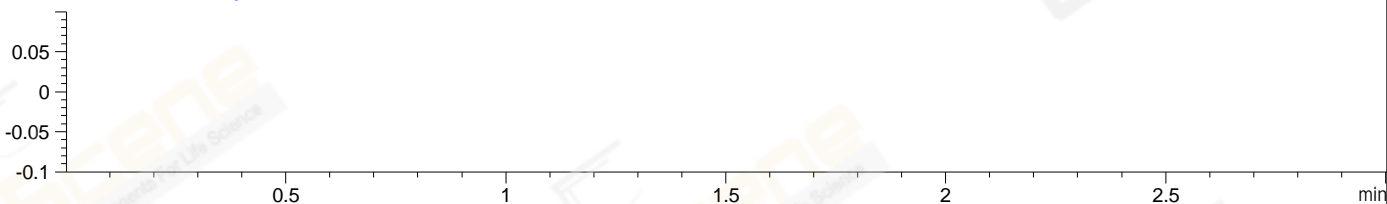
DAD1 C, Sig=254,4 Ref=off



MSD1 TIC, MS File ES-API, Pos, Scan, Frag: 70 \*\*\*\* NO MS PEAKS INTEGRATED \*\*\*\*



Ion 1, MSD1 1, Target Mass 0 +H Positive, EIC=0.7:1.7



## Integration Results for DAD1 B, Sig=214,4 Ref=off

RetTim	Width	Area	Height	Area%	MS (+)
-----	-----	-----	-----	-----	-----

## Integration Results for DAD1 C, Sig=254,4 Ref=off

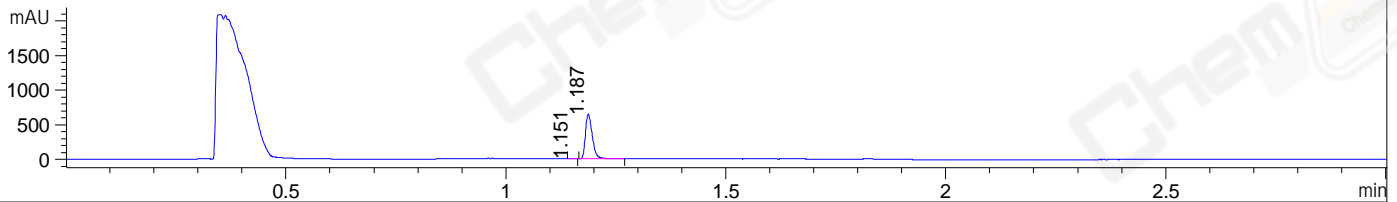
RetTim	Width	Area	Height	Area%	MS (+)
-----	-----	-----	-----	-----	-----

## Integration Results for MSD1 TIC, MS File

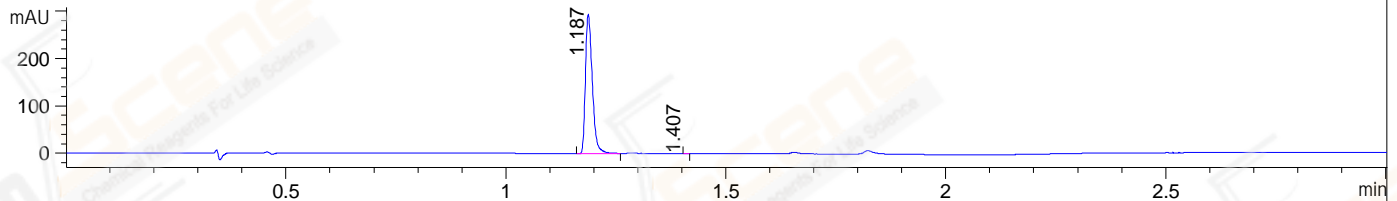
RetTim	Width	Area	Height	Area%	MS (+)
-----	-----	-----	-----	-----	-----

File ..\DATA\2019\20191025\741\BIZ2019-O25-CXL1.D Tgt Mass (CHM):  
 Injection Date : 25 Oct 19 4:27 pm +0800 Seq. Line : 93  
 Sample Name : BIZ2019-O25-CXL1 Location : P1-E-03  
 Acq. Operator : ZJ\_1432 Inj : 1  
 Spec. Reported : MS Integration Inj Volume : 2.5 ul  
 Acq. Method : D:\Chem32\1\data\2019\20191025\741\1-POS-3MIN.M  
 Analysis Method : D:\CHEM32\1\DATA\2019\20191025\741\1-POS-3MIN.M  
 Catalog No : CS-0018421 Batch# 57146  
 Method Info : Mobile Phase: A: water(0.01%TFA) B:ACN(0.01%TFA)  
 Gradient: 5% to 95%B within 1.3 min  
 Flow Rate :1.8ml/min  
 Column :SunFire C18, 4.6\*50mm,3.5um A-RP-433  
 Oven Temperature : 45□

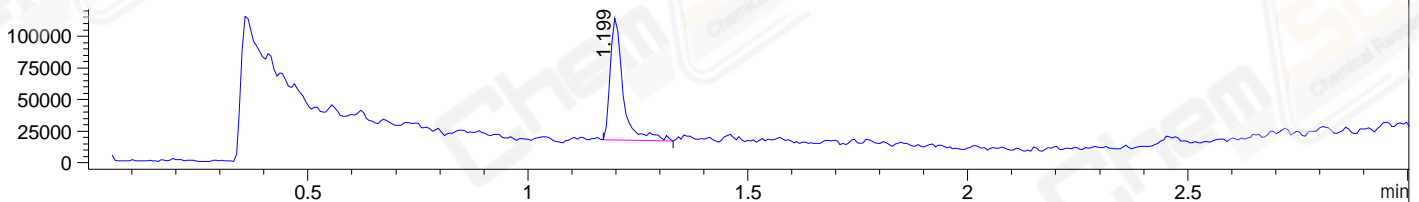
DAD1 B, Sig=214,4 Ref=off



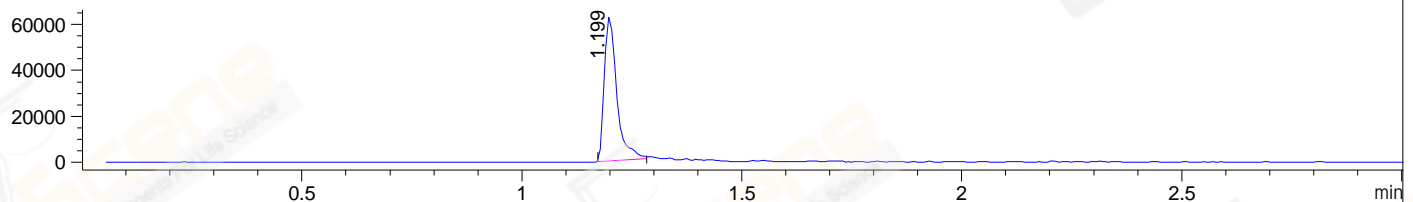
DAD1 C, Sig=254,4 Ref=off



MSD1 TIC, MS File ES-API, Pos, Scan, Frag: 70



Ion 353.17, MSD1 353.17, Target Mass 352.17 +H Positive, EIC=352.87:353.87



## Integration Results for DAD1 B, Sig=214,4 Ref=off

RetTim	Width	Area	Height	Area%	MS (+)
1.15	0.01	0.63	0.76	0.09	157
1.19	0.02	701.78	646.70	99.91	353

## Integration Results for DAD1 C, Sig=254,4 Ref=off

RetTim	Width	Area	Height	Area%	MS (+)
1.19	0.02	318.43	294.38	99.97	353
1.41	0.01	0.10	0.19	0.03	157

## Integration Results for MSD1 TIC, MS File

RetTim	Width	Area	Height	Area%	MS (+)
1.20	0.03	197270.03	96661.80	100.00	353

Ret. Time: 1.20

<<<< POSITIVE SPECTRA >>>>

ES-API Positive

