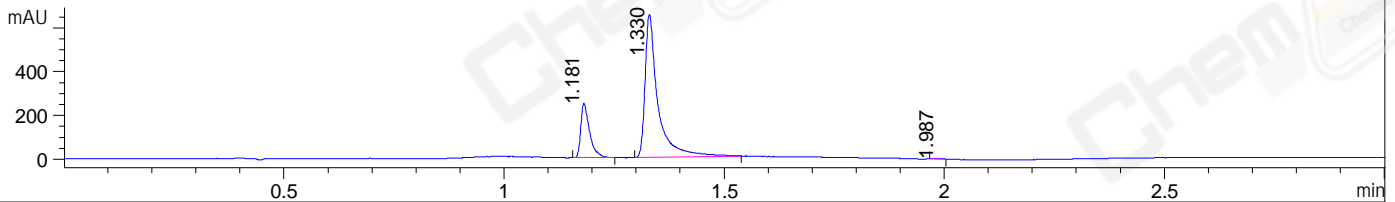
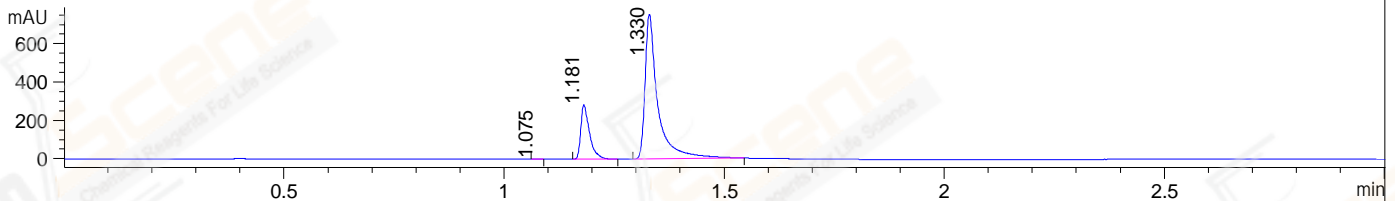


File ..\DATA\2019\20191210\789\BIZ2019-D09-CXL4.D Tgt Mass (CHM):
 Injection Date : 10 Dec 19 9:34 am +0800 Seq. Line : 12
 Sample Name : BIZ2019-D09-CXL4 Location : P1-A-08
 Acq. Operator : ZJ_1432 Inj : 1
 Spec. Reported : MS Integration Inj Volume : 2 ul
 Acq. Method : D:\Chem32\1\data\2019\20191210\789\1-POS-3MIN.M
 Analysis Method : D:\CHEM32\1\DATA\2019\20191210\789\1-POS-3MIN.M
 Catalog No : CS-2823 Batch#57456
 Method Info : Mobile Phase: A: water(0.01%TFA) B:ACN(0.01%TFA)
 Gradient: 5% to 95%B within 1.3 min
 Flow Rate :1.8ml/min
 Column :SunFire C18, 4.6*50mm,3.5um A-RP-433
 Oven Temperature : 45□

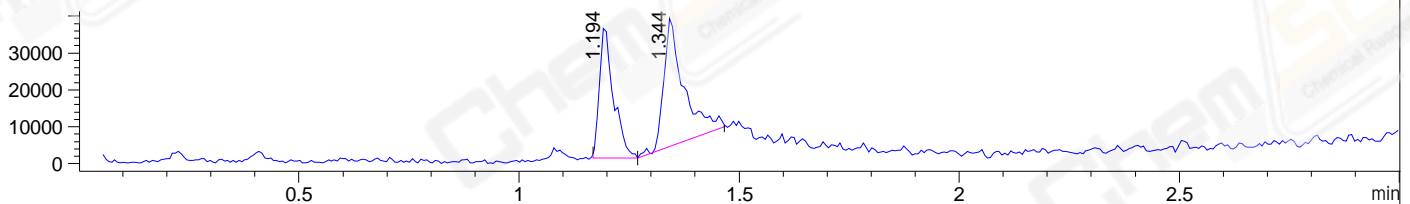
DAD1 B, Sig=214,4 Ref=off



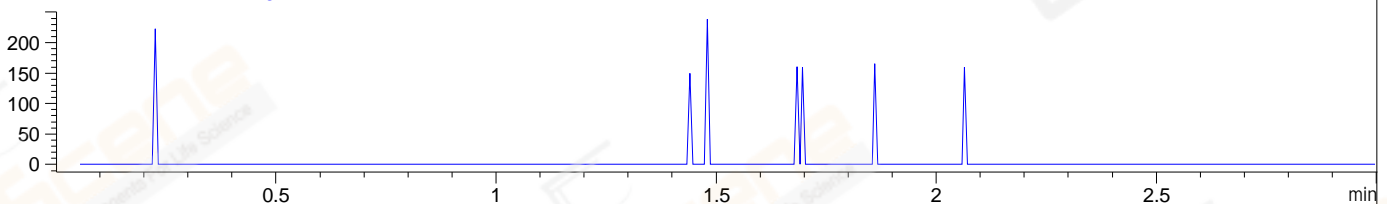
DAD1 C, Sig=254,4 Ref=off



MSD1 TIC, MS File ES-API, Pos, Scan, Frag: 70



Ion 745, MSD1 745, Target Mass 744 +H Positive, EIC=744.7:745.7



Integration Results for DAD1 B, Sig=214,4 Ref=off

RetTim	Width	Area	Height	Area%	MS (+)
1.18	0.02	344.48	248.76	20.55	303
1.33	0.03	1328.36	652.91	79.26	343
1.99	0.02	3.20	2.21	0.19	ND

Integration Results for DAD1 C, Sig=254,4 Ref=off

RetTim	Width	Area	Height	Area%	MS (+)
1.08	0.02	1.70	1.82	0.09	208
1.18	0.02	395.20	284.46	20.54	303
1.33	0.03	1527.19	755.45	79.37	343

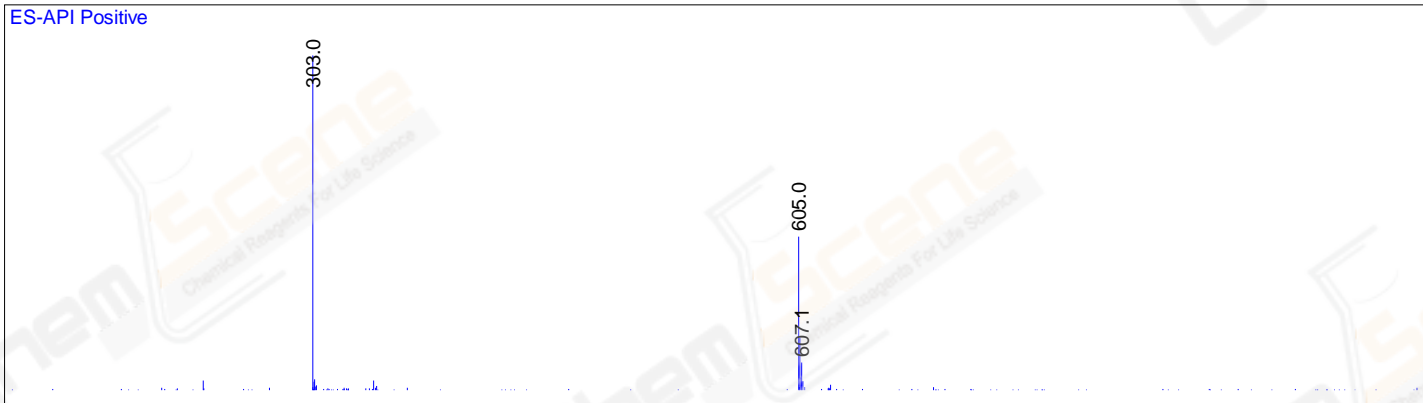
Integration Results for MSD1 TIC, MS File

RetTim	Width	Area	Height	Area%	MS (+)
1.19	0.03	79095.73	36358.64	41.85	303
1.34	0.04	109891.52	35220.46	58.15	343

Ret. Time: 1.19

<<<< POSITIVE SPECTRA >>>>

ES-API Positive



Ret. Time: 1.34

ES-API Positive

