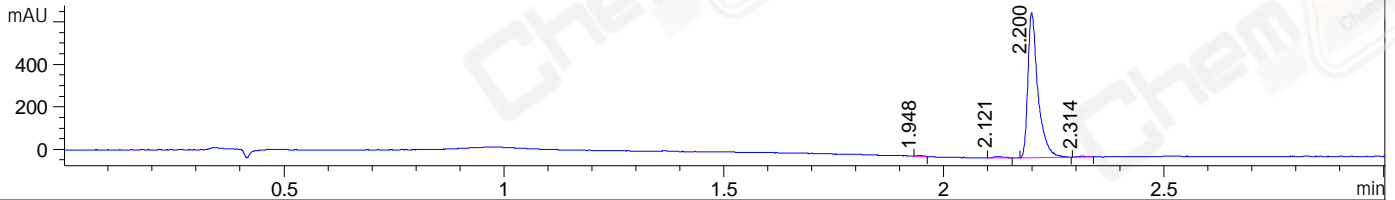
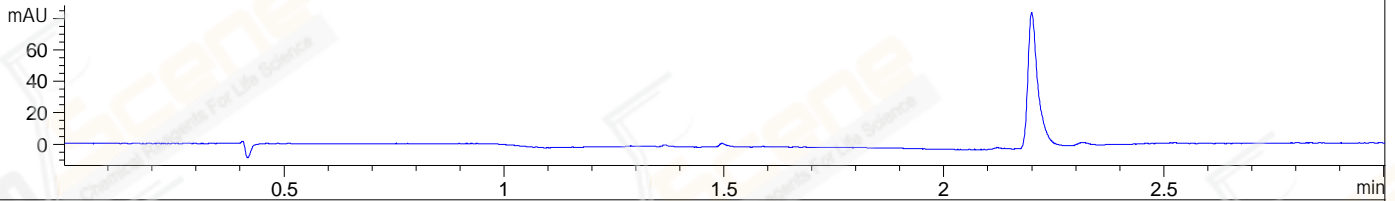


File ..\DATA\2019\20191218\791\BIZ2019-D18-SCH2-.D Tgt Mass (CHM):  
Injection Date : 18 Dec 19 2:19 pm +0800 Seq. Line : 69  
Sample Name : BIZ2019-D18-SCH2 Location : P1-A-03  
Acq. Operator : ZJ\_1432 Inj : 1  
Spec. Reported : MS Integration Inj Volume : 2 ul  
Acq. Method : D:\Chem32\1\data\2019\20191218\791\1-POS-3MIN.M  
Analysis Method : D:\CHEM32\1\DATA\2019\20191218\791\1-POS-3MIN.M  
CAS NO. : 74772-77-3  
Method Info : Mobile Phase: A: water(0.01%TFA) B:ACN(0.01%TFA)  
Gradient: 5% to 95%B within 1.3 min  
Flow Rate :1.8ml/min  
Column :SunFire C18, 4.6\*50mm,3.5um A-RP-433  
Oven Temperature : 45□

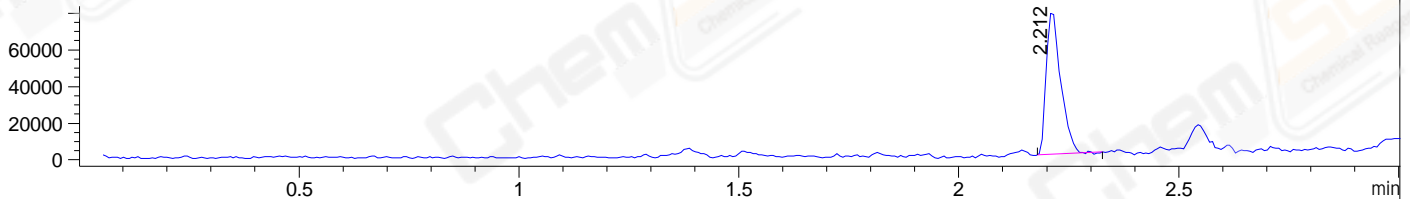
DAD1 B, Sig=214,4 Ref=off



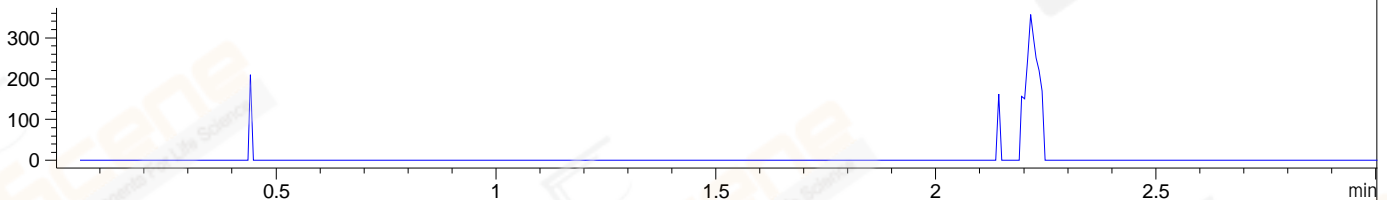
DAD1 C, Sig=254,4 Ref=off



MSD1 TIC, MS File ES-API, Pos, Scan, Frag: 70



Ion 334, MSD1 334, Target Mass 333 +H Positive, EIC=333.7:334.7



Integration Results for DAD1 B, Sig=214,4 Ref=off

| RetTim | Width | Area    | Height | Area% | MS(+) |
|--------|-------|---------|--------|-------|-------|
| 1.95   | 0.02  | 2.26    | 2.43   | 0.20  | ND    |
| 2.12   | 0.02  | 10.96   | 7.39   | 0.99  | ND    |
| 2.20   | 0.03  | 1087.85 | 684.43 | 98.44 | 111   |
| 2.31   | 0.02  | 3.98    | 3.16   | 0.36  | ND    |

Integration Results for DAD1 C, Sig=254,4 Ref=off

| RetTim | Width | Area | Height | Area% | MS(+) |
|--------|-------|------|--------|-------|-------|
|--------|-------|------|--------|-------|-------|

Integration Results for MSD1 TIC, MS File

| RetTim | Width | Area      | Height   | Area%  | MS(+) |
|--------|-------|-----------|----------|--------|-------|
| 2.21   | 0.03  | 175848.77 | 78762.48 | 100.00 | 111   |

Ret. Time: 2.21

<<<< POSITIVE SPECTRA >>>>

ES-API Positive

