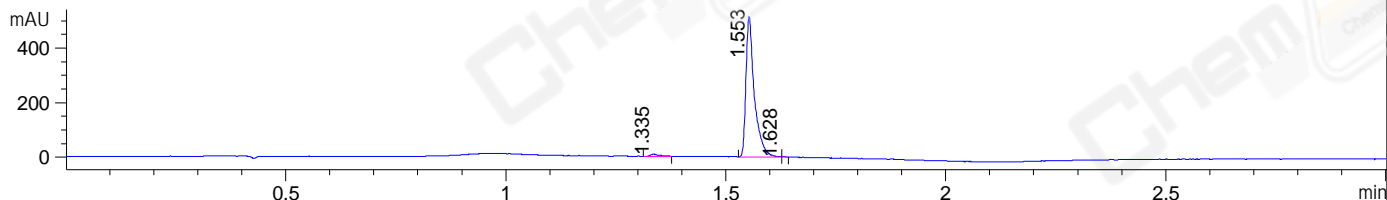
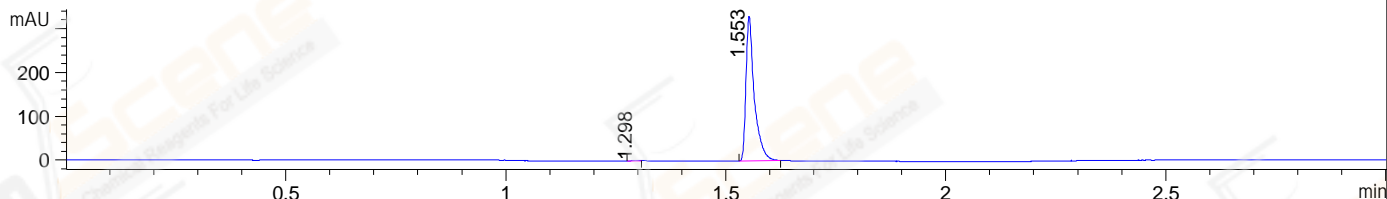


File ..DATA\2019\20191230\799\BIZ2019-D30-SCH2---.D Tgt Mass (CHM):
 Injection Date : 30 Dec 19 3:58 pm +0800 Seq. Line : 90
 Sample Name : BIZ2019-D30-SCH2 Location : P1-B-08
 Acq. Operator : ZJ_1432 Inj : 1
 Spec. Reported : MS Integration Inj Volume : 0.5 ul
 Acq. Method : D:\Chem32\1\data\2019\20191230\799\1-POS-3MIN.M
 Analysis Method : D:\CHEM32\1\DATA\2019\20191230\799\1-POS-3MIN.M
 Catalog No : CS-0008288 Batch#58493
 Method Info : Mobile Phase: A: water(0.01%TFA) B:ACN(0.01%TFA)
 Gradient: 5% to 95%B within 1.3 min
 Flow Rate :1.8ml/min
 Column :SunFire C18, 4.6*50mm,3.5um A-RP-433
 Oven Temperature : 45□

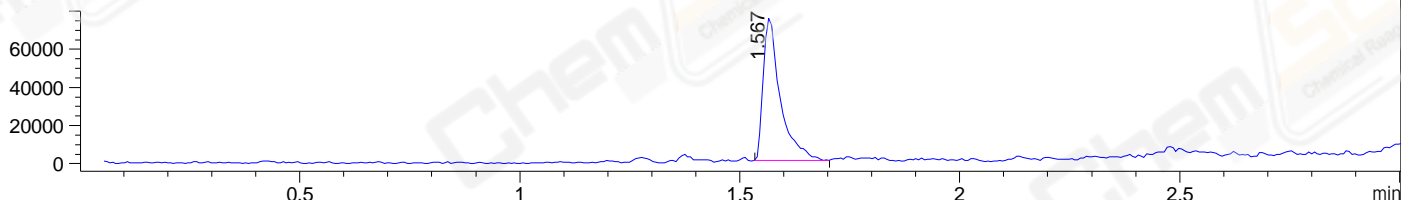
DAD1 B, Sig=214,4 Ref=off



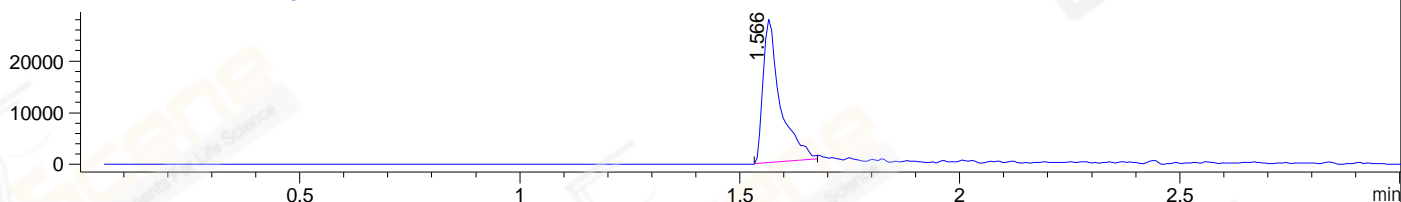
DAD1 C, Sig=254,4 Ref=off



MSD1 TIC, MS File ES-API, Pos, Scan, Frag: 70



Ion 271, MSD1 271, Target Mass 270 +H Positive, EIC=270.7:271.7



Integration Results for DAD1 B, Sig=214,4 Ref=off

RetTim	Width	Area	Height	Area%	MS (+)
1.34	0.02	10.89	7.62	1.57	ND
1.55	0.02	682.34	515.89	98.33	271
1.63	0.01	0.73	1.62	0.11	271

Integration Results for DAD1 C, Sig=254,4 Ref=off

RetTim	Width	Area	Height	Area%	MS (+)
1.30	0.02	1.40	1.09	0.32	ND
1.55	0.02	434.89	330.55	99.68	271

Integration Results for MSD1 TIC, MS File

RetTim	Width	Area	Height	Area%	MS (+)
1.57	0.04	202394.00	75108.80	100.00	271

Ret. Time: 1.57

<<<< POSITIVE SPECTRA >>>>

ES-API Positive

